



## Rhode Island Department of Labor and Training

# *Weekly Update of Claims Activity*

*Week Ending: May 3, 2014*

### *Unemployment Insurance*

**Initial Claims** – 1,447 initial claims were processed during the week ending 5/3/14, a decrease of 823 from the previous week, and an increase of 390 from a year ago. The number of initial claims filed to date is down 6.1 percent from last year and down 4.7 percent from two years ago.

**Continued Claims** – 12,923 continued claims were processed during the week of 5/3/14, an increase of 1,616 from the previous week and an increase of 1,275 from a year ago. The number of continued claims filed to date is down 4.8 percent from last year and down 12.3 percent from two years ago.

**Workshare** – gives employers an alternative to layoffs by allowing employees to work reduced hours and collect a percentage of regular UI benefits to compensate for lost pay. This week, 31 initial claims and 500 continued claims were processed. There were 8 layoffs prevented this week, as a result of Workshare.

**Exhaustions** – 337 individuals exhausted their regular payments this week, an increase of 46 from the previous week and an increase of 4 from a year ago.

### *Temporary Disability Insurance*

**Temporary Disability Insurance** – 881 initial claims and 7,118 continued claims were processed for Temporary Disability Insurance. The average weekly TDI payment is \$453 per week. Rhode Island is currently paying an average of 10.8 weeks per new claim.

**Temporary Caregiver Insurance** – Of the 881 TDI initial claims, 120 (13.6%) were TCI Claims. This week 238 TCI payments were issued totaling \$108,666. The average weekly TCI payment was \$457.

	Initial Claims			Continued Claims	TOTAL - Initial and Continued Claims			
	Total	New	Additional		Current Week	Previous Week	Year Ago	Two Years Ago
<b>Total - All programs*</b>	1,501	808	693	13,938	15,439	14,431	13,653	16,719
<b>UI Claims</b>	1,447	779	668	12,923	14,370	13,577	12,705	14,668
Change from:								
Previous Week	-823	-13	-810	1,616	793			
Year Ago	390	124	266	1,275	1,665			
Two Years Ago	116	25	91	-414	-298			
<b>Interstate-Liable</b>	23	12	11	515	538	548	473	495
<b>Workshare</b>	31	17	14	500	531	306	475	1,556
<b>Workshare Equivalency</b>	8	5	3	113	121	84	125	393
<b>UI Exhaustions</b>	-	-	-	337	337	291	333	498
<b>TDI Claims (Includes TCI)</b>	881	701	180	7,118	7,999	7,624	6,997	813
Change from:								
Previous Week	73	56	17	302	375			
Year Ago	-85	-94	9	1,087	1,002			

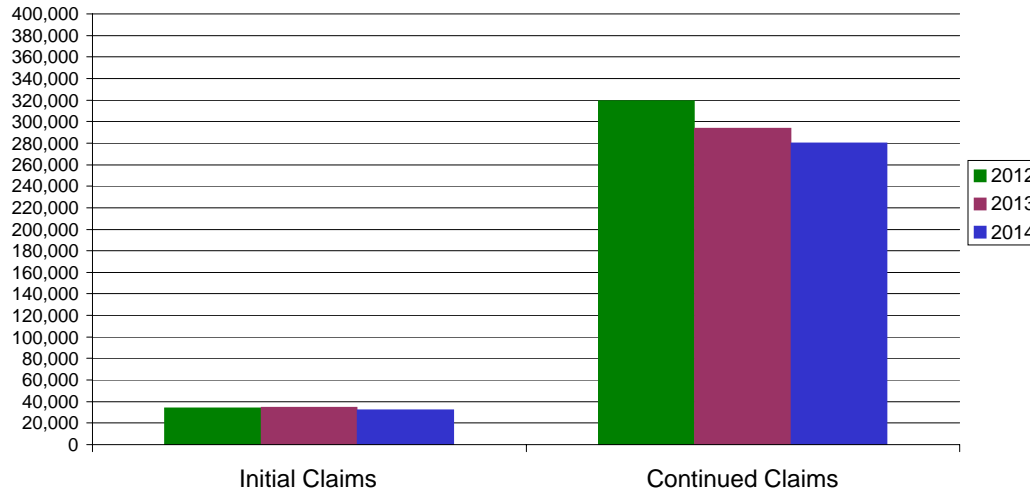
\* Includes UI, EUC08, Workshare & Interstate Liable.

Equal Opportunity Employer / Program / Auxiliary aids and services available upon request to individuals with disabilities / TTY via RI Relay 711.

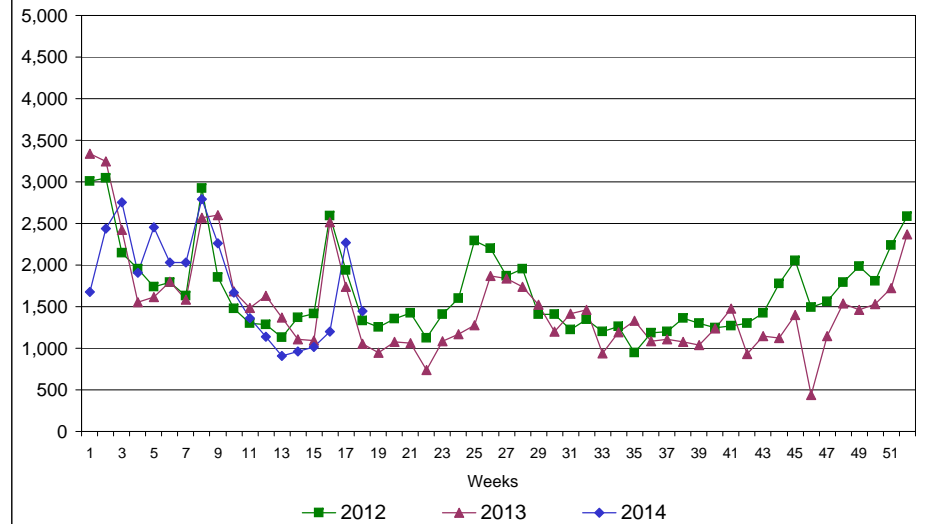
# Rhode Island Department of Labor and Training

## May 3, 2014

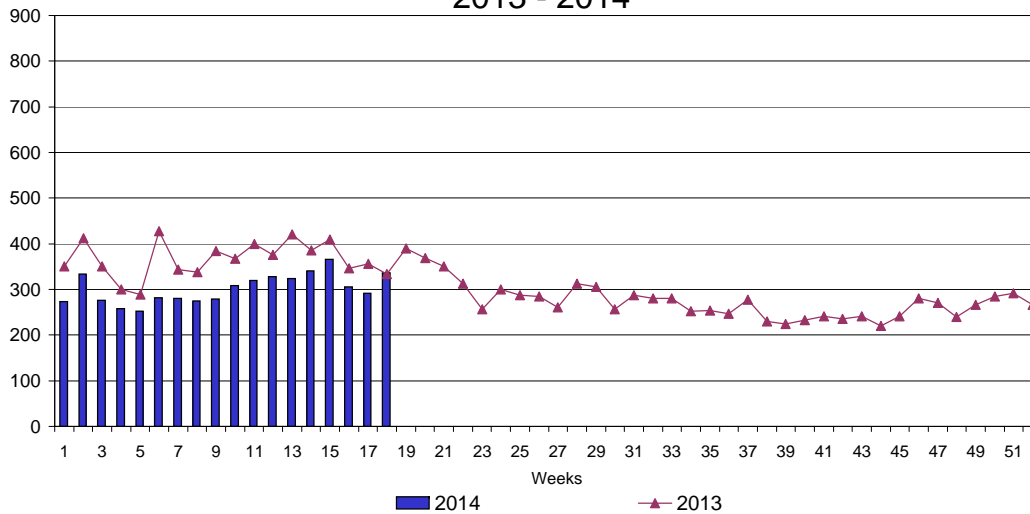
### UI Claims Comparison Year to Date



### UI Initial Claims 2012 - 2014



### UI Exhaustions 2013 - 2014



### TDI Claims Comparison Year to Date

