



Rhode Island Department of Labor and Training

Weekly Update of Claims Activity

Week Ending: May 10, 2014

Unemployment Insurance

Initial Claims – 1,147 initial claims were processed during the week ending 5/10/14, a decrease of 300 from the previous week, and an increase of 200 from a year ago. The number of initial claims filed to date is down 5.4 percent from last year and down 4.9 percent from two years ago.

Continued Claims – 10,322 continued claims were processed during the week of 5/10/14, a decrease of 2,601 from the previous week and a decrease of 727 from a year ago. The number of continued claims filed to date is down 4.9 percent from last year and down 12.6 percent from two years ago.

Workshare – gives employers an alternative to layoffs by allowing employees to work reduced hours and collect a percentage of regular UI benefits to compensate for lost pay. This week, 5 initial claims and 392 continued claims were processed. There was 1 layoff prevented this week, as a result of Workshare.

Exhaustions – 339 individuals exhausted their regular payments this week, an increase of 2 from the previous week and a decrease of 51 from a year ago.

Temporary Disability Insurance

Temporary Disability Insurance – 1,143 initial claims and 7,641 continued claims were processed for Temporary Disability Insurance. The average weekly TDI payment is \$451 per week. Rhode Island is currently paying an average of 10.7 weeks per new claim.

Temporary Caregiver Insurance – Of the 1,143 TDI initial claims, 120 (10.5%) were TCI Claims. This week 243 TCI payments were issued totaling \$123,466. The average weekly TCI payment was \$508.

	<u>Initial Claims</u>			<u>Continued Claims</u>	<u>TOTAL - Initial and Continued Claims</u>			
	<u>Total</u>	<u>New</u>	<u>Additional</u>		<u>Current Week</u>	<u>Previous Week</u>	<u>Year Ago</u>	<u>Two Years Ago</u>
Total - All programs*	1,186	789	397	11,250	12,436	15,439	12,992	15,595
UI Claims	1,147	775	372	10,322	11,469	14,370	11,996	14,043
Change from:								
Previous Week	-300	-4	-296	-2,601	-2,901			
Year Ago	200	204	-4	-727	-527			
Two Years Ago	-110	90	-200	-2,464	-2,574			
Interstate-Liable	34	14	20	536	570	538	497	464
Workshare	5	0	5	392	397	531	499	1,088
Workshare Equivalency	1	0	1	91	92	121	120	326
UI Exhaustions	-	-	-	339	339	337	390	484
TDI Claims (Includes TCI)	1,143	896	247	7,641	8,784	7,999	7,153	7,938
Change from:								
Previous Week	262	195	67	523	785			
Year Ago	421	304	117	1,210	1,631			

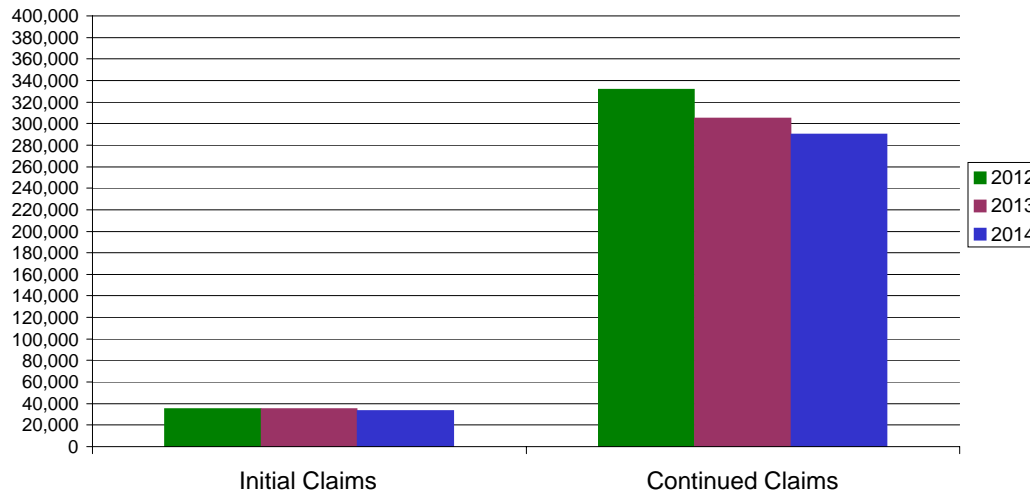
* Includes UI, EUC08, Workshare & Interstate Liable.

Equal Opportunity Employer / Program / Auxiliary aids and services available upon request to individuals with disabilities / TTY via RI Relay 711.

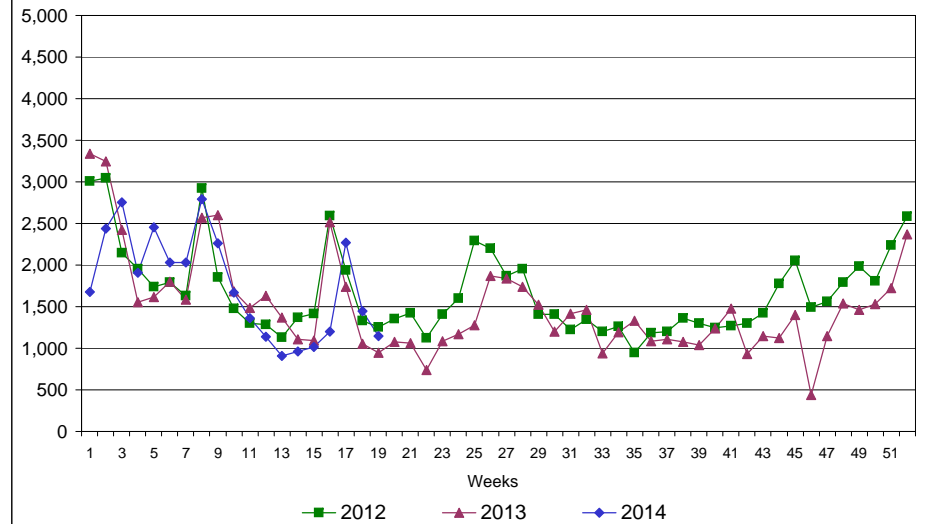
Rhode Island Department of Labor and Training

May 10, 2014

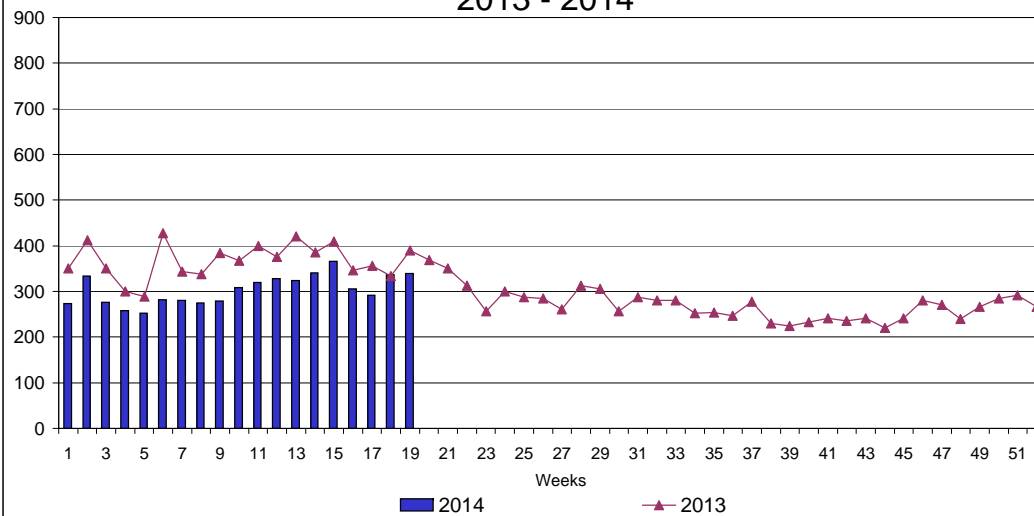
UI Claims Comparison Year to Date



UI Initial Claims 2012 - 2014



UI Exhaustions 2013 - 2014



TDI Claims Comparison Year to Date

