



Rhode Island Department of Labor and Training

Weekly Update of Claims Activity

Week Ending: May 31, 2014

Unemployment Insurance

Initial Claims – 728 initial claims were processed during the week ending 5/31/14, a decrease of 51 from the previous week, and a decrease of 10 from a year ago. The number of initial claims filed to date is down 6.0 percent from last year and down 8.0 percent from two years ago.

Continued Claims – 9,289 continued claims were processed during the week of 5/31/14, a decrease of 314 from the previous week and a decrease of 369 from a year ago. The number of continued claims filed to date is down 5.0 percent from last year and down 13.6 percent from two years ago.

Workshare – gives employers an alternative to layoffs by allowing employees to work reduced hours and collect a percentage of regular UI benefits to compensate for lost pay. This week, there were not any initial claims and 149 continued claims were processed. There were not any layoffs prevented this week, as a result of Workshare.

Exhaustions – 282 individuals exhausted their regular payments this week, a decrease of 15 from the previous week and a decrease of 31 from a year ago.

Temporary Disability Insurance

Temporary Disability Insurance – 979 initial claims and 6,149 continued claims were processed for Temporary Disability Insurance. The average weekly TDI payment is \$458 per week. Rhode Island is currently paying an average of 10.7 weeks per new claim. To date there have been 18,784 TDI initial claims filed.

Temporary Caregiver Insurance – Of the 979 TDI initial claims, 105 (10.7%) were TCI Claims. This week 255 TCI payments were issued totaling \$124,772. The average weekly TCI payment was \$489. Of the 18,784 TDI claims filed to date, 1,526 or 8.1% were TCI claims.

	Initial Claims			Continued Claims	TOTAL - Initial and Continued Claims			
	Total	New	Additional		Current Week	Previous Week	Year Ago	Two Years Ago
Total - All programs*	747	427	320	9,885	10,632	11,134	11,369	15,116
UI Claims	728	418	310	9,289	10,017	10,382	10,396	13,215
Change from:								
Previous Week	-51	-19	-32	-314	-365			
Year Ago	-10	-17	7	-369	-379			
Two Years Ago	-398	-271	-127	-2,800	-3,198			
Interstate-Liable	19	9	10	447	466	475	474	520
Workshare	0	0	0	149	149	277	499	1,381
Workshare Equivalency	0	0	0	39	39	70	121	324
UI Exhaustions	-	-	-	282	282	297	313	391
TDI Claims (Includes TCI)	979	778	201	6,149	7,128	9,194	6,806	7,071
Change from:								
Previous Week	35	30	5	-2,101	-2,066			
Year Ago	168	112	56	154	322			

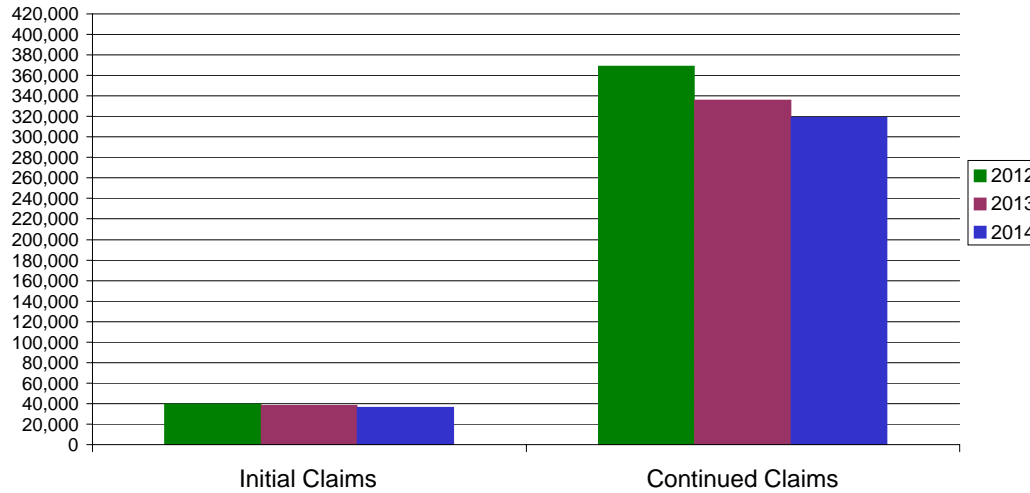
* Includes UI, EUC08, Workshare & Interstate Liable.

Equal Opportunity Employer / Program / Auxiliary aids and services available upon request to individuals with disabilities / TTY via RI Relay 711.

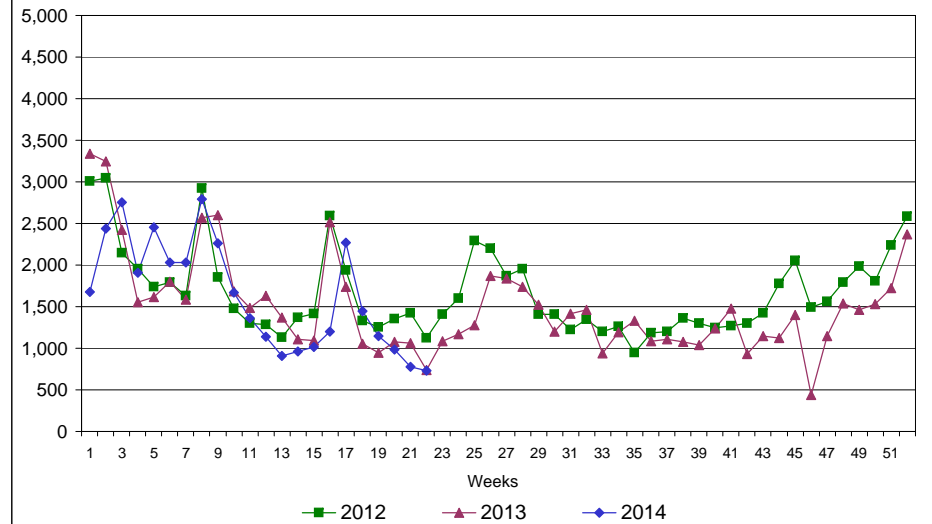
Rhode Island Department of Labor and Training

May 31, 2014

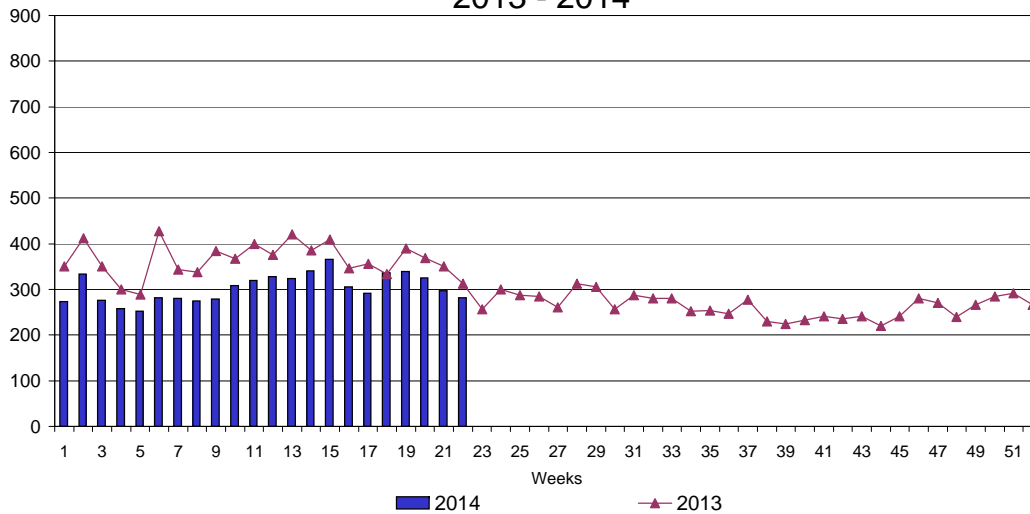
UI Claims Comparison Year to Date



UI Initial Claims 2012 - 2014



UI Exhaustions 2013 - 2014



TDI Claims Comparison Year to Date

