



## Rhode Island Department of Labor and Training

# *Weekly Update of Claims Activity*

*Week Ending: June 7, 2014*

### *Unemployment Insurance*

**Initial Claims** – 1,085 initial claims were processed during the week ending 6/7/14, an increase of 357 from the previous week, and an increase of 3 from a year ago. The number of initial claims filed to date is down 5.8 percent from last year and down 8.5 percent from two years ago.

**Continued Claims** – 9,127 continued claims were processed during the week of 6/7/14, a decrease of 162 from the previous week and a decrease of 838 from a year ago. The number of continued claims filed to date is down 5.1 percent from last year and down 14.0 percent from two years ago.

**Workshare** – gives employers an alternative to layoffs by allowing employees to work reduced hours and collect a percentage of regular UI benefits to compensate for lost pay. This week, 13 initial claims and 239 continued claims were processed. An estimated 4 layoffs were prevented this week, as a result of Workshare.

**Exhaustions** – 251 individuals exhausted their regular payments this week, a decrease of 31 from the previous week and a decrease of 5 from a year ago.

### *Temporary Disability Insurance*

**Temporary Disability Insurance** – 695 initial claims and 7,927 continued claims were processed for Temporary Disability Insurance. The average weekly TDI payment is \$444 per week. Rhode Island is currently paying an average of 10.7 weeks per new claim. To date there have been 19,479 TDI initial claims filed.

**Temporary Caregiver Insurance** – Of the 695 TDI initial claims, 129 (18.6%) were TCI Claims. This week 376 TCI payments were issued totaling \$183,580. The average weekly TCI payment was \$488. Of the 19,479 TDI claims filed to date, 1,655 or 8.5% were TCI claims.

	Initial Claims			Continued Claims	TOTAL - Initial and Continued Claims			
	Total	New	Additional		Current Week	Previous Week	Year Ago	Two Years Ago
<b>Total - All programs*</b>	1,131	723	408	9,792	10,923	10,632	12,224	14,853
<b>UI Claims</b>	1,085	691	394	9,127	10,212	10,017	11,047	13,615
Change from:								
Previous Week	357	273	84	-162	195			
Year Ago	3	48	-45	-838	-835			
Two Years Ago	-322	-112	-210	-3,081	-3,403			
<b>Interstate-Liable</b>	33	19	14	426	459	466	529	547
<b>Workshare</b>	13	13	0	239	252	149	648	691
<b>Workshare Equivalency</b>	4	4	0	65	69	39	172	208
<b>UI Exhaustions</b>	-	-	-	251	251	282	256	355
<b>TDI Claims (Includes TCI)</b>	695	537	158	7,927	8,622	7,128	7,694	8,144
Change from:								
Previous Week	-284	-241	-43	1,778	1,494			
Year Ago	132	70	62	796	928			

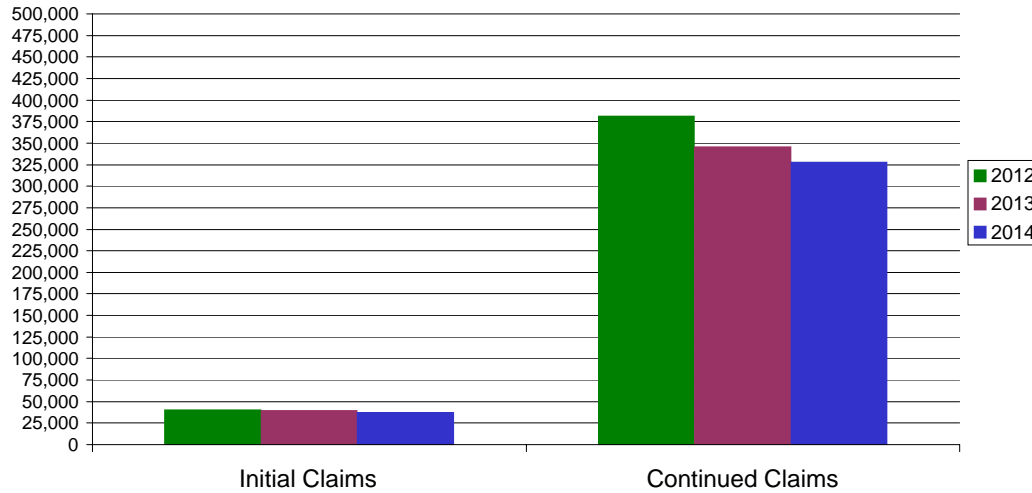
\* Includes UI, EUC08, Workshare & Interstate Liable.

Equal Opportunity Employer / Program / Auxiliary aids and services available upon request to individuals with disabilities / TTY via RI Relay 711.

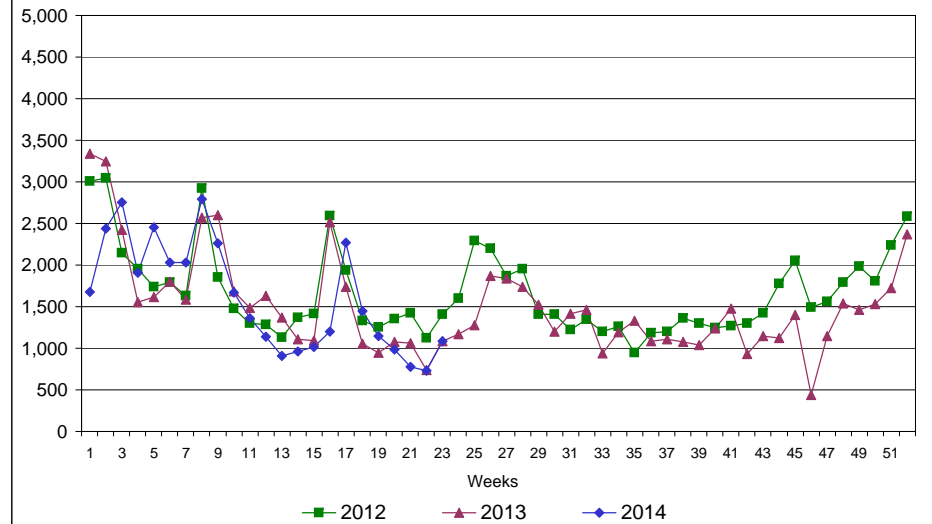
# Rhode Island Department of Labor and Training

## June 7, 2014

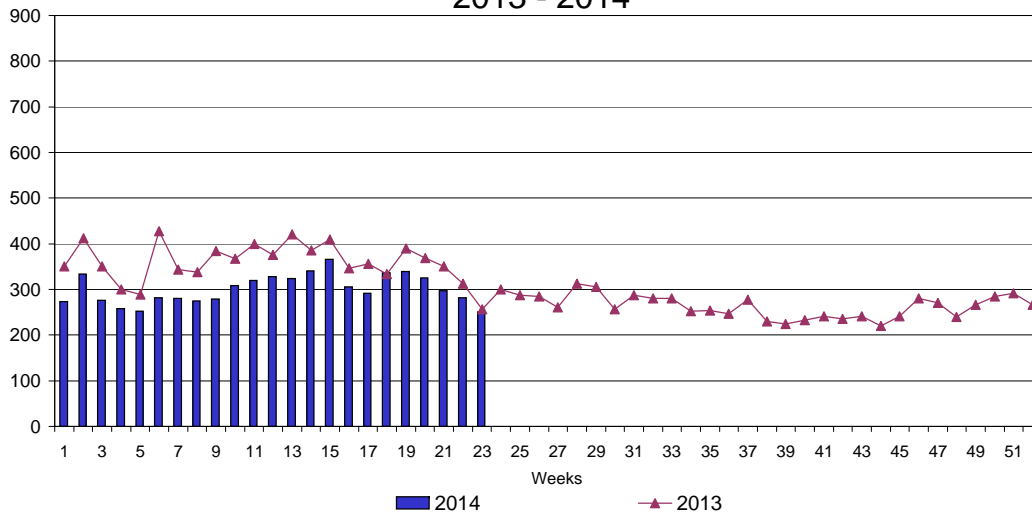
### UI Claims Comparison Year to Date



### UI Initial Claims 2012 - 2014



### UI Exhaustions 2013 - 2014



### TDI Claims Comparison Year to Date

