



## Rhode Island Department of Labor and Training

# *Weekly Update of Claims Activity*

*Week Ending: June 14, 2014*

### *Unemployment Insurance*

**Initial Claims** – 1,138 initial claims were processed during the week ending 6/14/14, an increase of 53 from the previous week, and a decrease of 34 from a year ago. The number of initial claims filed to date is down 5.7 percent from last year and down 9.3 percent from two years ago.

**Continued Claims** – 9,054 continued claims were processed during the week of 6/14/14, a decrease of 73 from the previous week and a decrease of 651 from a year ago. The number of continued claims filed to date is down 5.2 percent from last year and down 14.3 percent from two years ago.

**Workshare** – gives employers an alternative to layoffs by allowing employees to work reduced hours and collect a percentage of regular UI benefits to compensate for lost pay. This week, 5 initial claims and 133 continued claims were processed. An estimated 2 layoffs were prevented this week, as a result of Workshare.

**Exhaustions** – 254 individuals exhausted their regular payments this week, an increase of 3 from the previous week and a decrease of 46 from a year ago.

### *Temporary Disability Insurance*

**Temporary Disability Insurance** – 936 initial claims and 7,412 continued claims were processed for Temporary Disability Insurance. The average weekly TDI payment is \$444 per week. Rhode Island is currently paying an average of 10.8 weeks per new claim. To date there have been 20,415 TDI initial claims filed.

**Temporary Caregiver Insurance** – Of the 936 TDI initial claims, 103 (11.0%) were TCI Claims. This week 277 TCI payments were issued totaling \$129,207. The average weekly TCI payment was \$466. Of the 20,415 TDI claims filed to date, 1,758 or 8.6% were TCI claims.

	Initial Claims			Continued Claims	TOTAL - Initial and Continued Claims			
	Total	New	Additional		Current Week	Previous Week	Year Ago	Two Years Ago
<b>Total - All programs*</b>	1,170	745	425	9,618	10,788	10,923	12,063	15,479
<b>UI Claims</b>	1,138	728	410	9,054	10,192	10,212	10,877	13,702
Change from:								
Previous Week	53	37	16	-73	-20			
Year Ago	-34	-25	-9	-651	-685			
Two Years Ago	-459	-60	-399	-3,051	-3,510			
<b>Interstate-Liable</b>	27	13	14	431	458	459	578	465
<b>Workshare</b>	5	4	1	133	138	252	608	1,312
<b>Workshare Equivalency</b>	2	2	0	35	37	69	146	328
<b>UI Exhaustions</b>	-	-	-	254	254	251	300	411
<b>TDI Claims (Includes TCI)</b>	936	754	182	7,412	8,348	8,622	7,550	8,206
Change from:								
Previous Week	241	217	24	-515	-274			
Year Ago	-251	-229	-22	1,049	798			

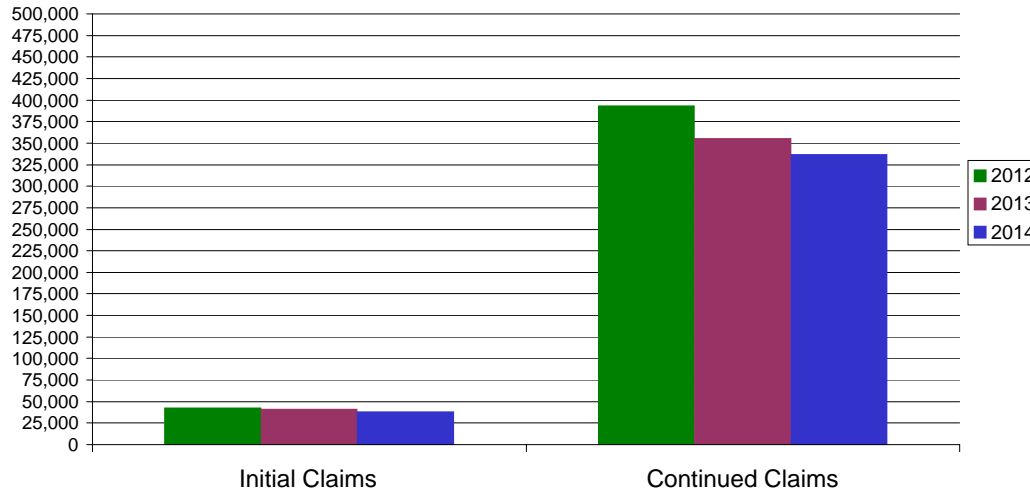
\* Includes UI, EUC08, Workshare & Interstate Liable.

Equal Opportunity Employer / Program / Auxiliary aids and services available upon request to individuals with disabilities / TTY via RI Relay 711.

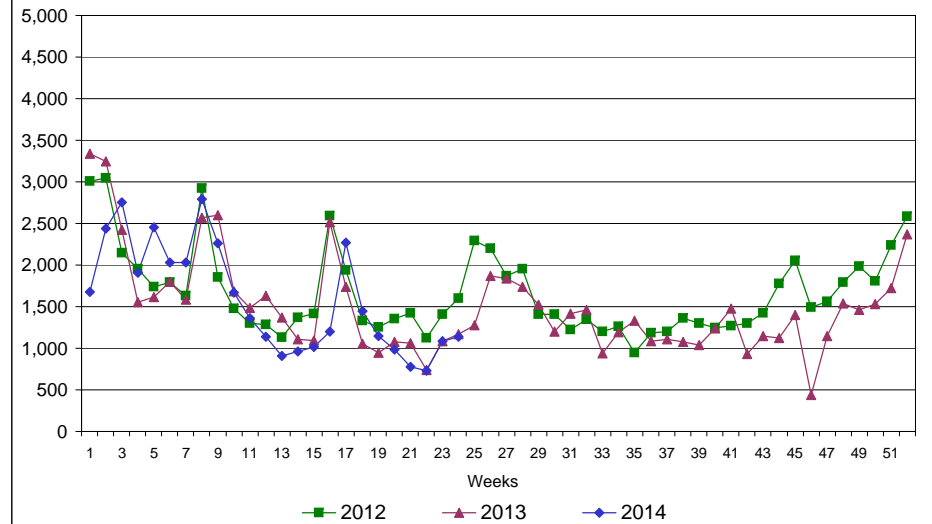
# Rhode Island Department of Labor and Training

## June 14, 2014

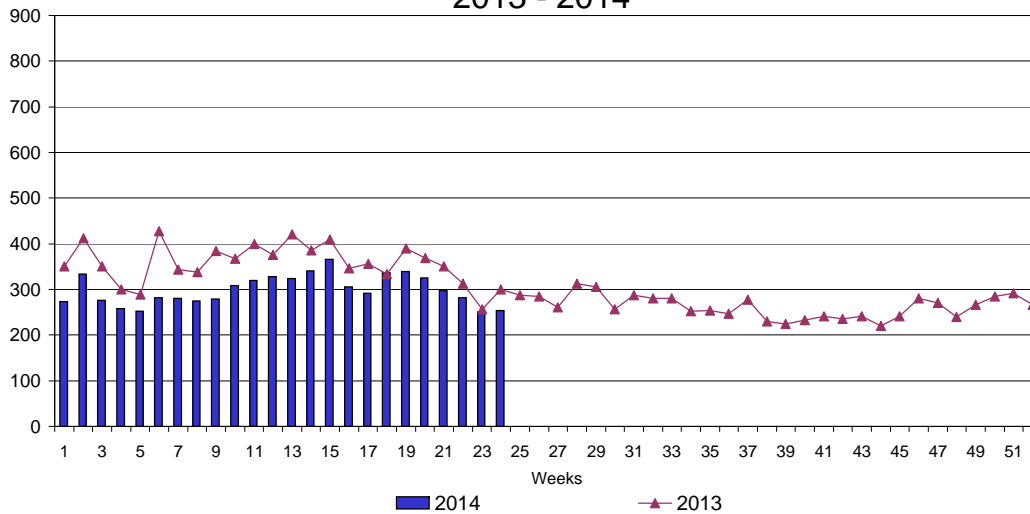
### UI Claims Comparison Year to Date



### UI Initial Claims 2012 - 2014



### UI Exhaustions 2013 - 2014



### TDI Claims Comparison Year to Date

