



## Rhode Island Department of Labor and Training

# *Weekly Update of Claims Activity*

**Week Ending: June 21, 2014**

### *Unemployment Insurance*

**Initial Claims** – 1,629 initial claims were processed during the week ending 6/21/14, an increase of 491 from the previous week, and an increase of 349 from a year ago. The number of initial claims filed to date is down 4.7 percent from last year and down 10.3 percent from two years ago.

**Continued Claims** – 9,050 continued claims were processed during the week of 6/21/14, a decrease of 4 from the previous week and a decrease of 831 from a year ago. The number of continued claims filed to date is down 5.3 percent from last year and down 14.7 percent from two years ago.

**Workshare** – gives employers an alternative to layoffs by allowing employees to work reduced hours and collect a percentage of regular UI benefits to compensate for lost pay. This week, 101 initial claims and 439 continued claims were processed. An estimated 21 layoffs were prevented this week, as a result of Workshare.

**Exhaustions** – 255 individuals exhausted their regular payments this week, an increase of 1 from the previous week and a decrease of 33 from a year ago.

### *Temporary Disability Insurance*

**Temporary Disability Insurance** – 1,048 initial claims and 7,490 continued claims were processed for Temporary Disability Insurance. The average weekly TDI payment is \$446 per week. Rhode Island is currently paying an average of 10.7 weeks per new claim. To date there have been 21,463 TDI initial claims filed.

**Temporary Caregiver Insurance** – Of the 1,048 TDI initial claims, 119 (11.4%) were TCI Claims. This week 324 TCI payments were issued totaling \$164,445. The average weekly TCI payment was \$508. Of the 21,463 TDI claims filed to date, 1,877 or 8.7% were TCI claims.

	Initial Claims			Continued Claims	TOTAL - Initial and Continued Claims			
	Total	New	Additional		Current Week	Previous Week	Year Ago	Two Years Ago
<b>Total - All programs*</b>	1,751	892	859	9,922	11,673	10,788	12,202	15,968
<b>UI Claims</b>	1,629	782	847	9,050	10,679	10,192	11,161	14,620
Change from:								
Previous Week	491	54	437	-4	487			
Year Ago	349	45	304	-831	-482			
Two Years Ago	-661	-207	-454	-3,280	-3,941			
<b>Interstate-Liable</b>	21	11	10	433	454	458	518	480
<b>Workshare</b>	101	99	2	439	540	138	523	868
<b>Workshare Equivalency</b>	21	20	1	113	134	37	146	301
<b>UI Exhaustions</b>	-	-	-	255	255	254	288	384
<b>TDI Claims (Includes TCI)</b>	1,048	838	210	7,490	8,538	8,348	7,792	8,669
Change from:								
Previous Week	112	84	28	78	190			
Year Ago	416	312	104	330	746			

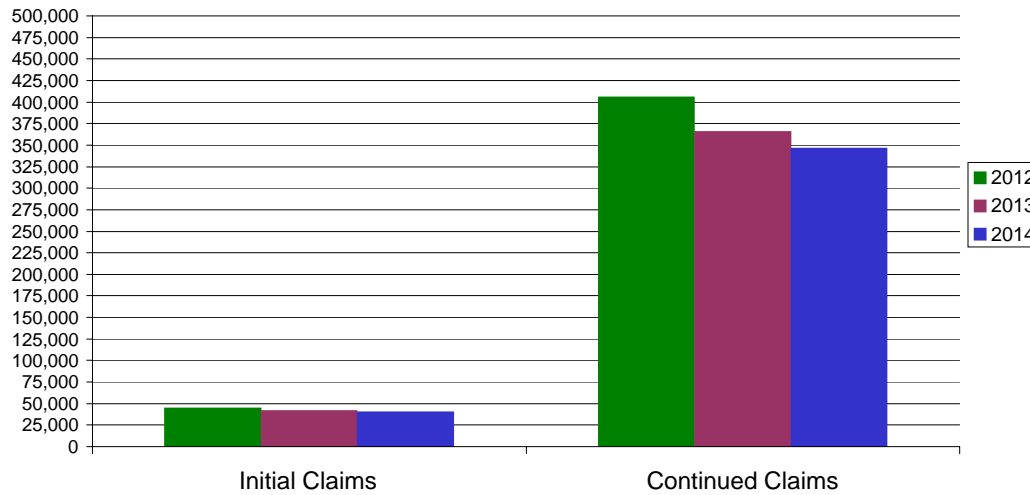
\* Includes UI, EUC08, Workshare & Interstate Liable.

Equal Opportunity Employer / Program / Auxiliary aids and services available upon request to individuals with disabilities / TTY via RI Relay 711.

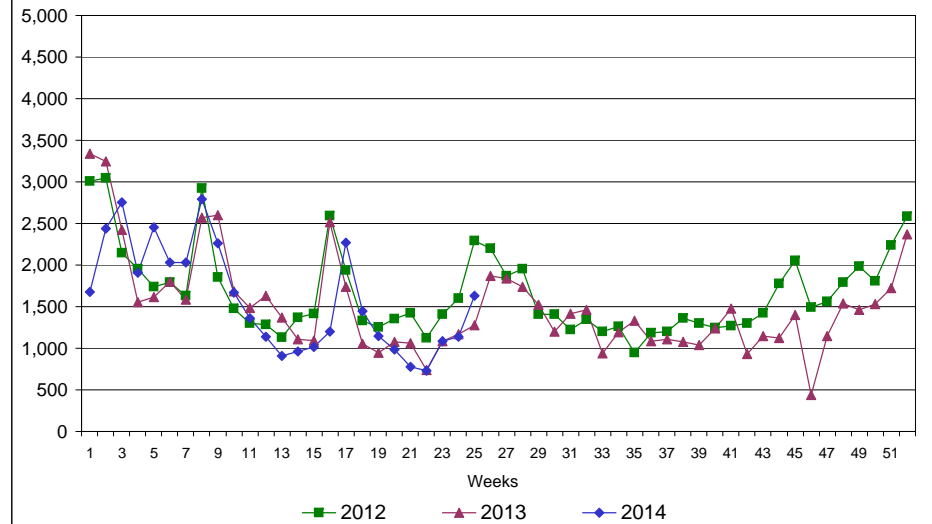
# Rhode Island Department of Labor and Training

## June 21, 2014

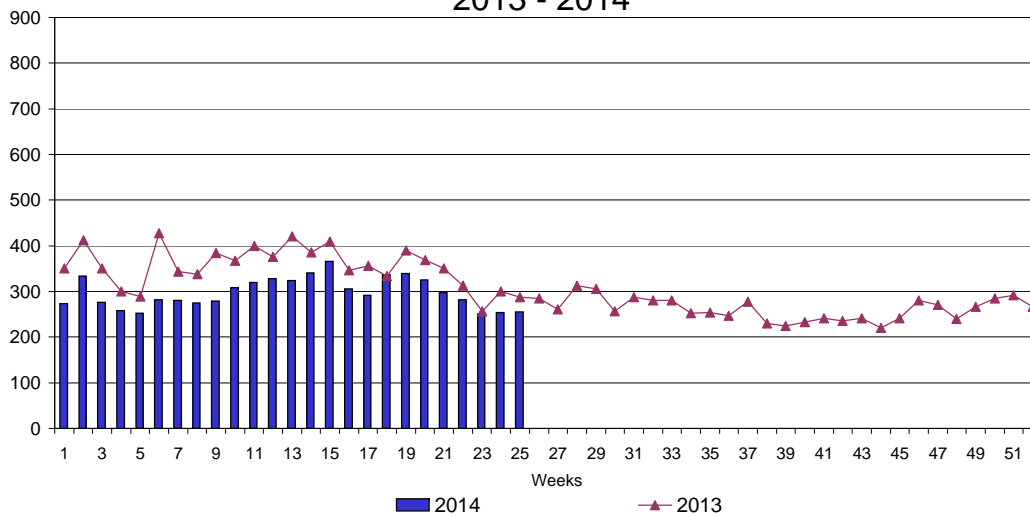
### UI Claims Comparison Year to Date



### UI Initial Claims 2012 - 2014



### UI Exhaustions 2013 - 2014



### TDI Claims Comparison Year to Date

