



## Rhode Island Department of Labor and Training

# *Weekly Update of Claims Activity*

**Week Ending: July 5, 2014**

### *Unemployment Insurance*

**Initial Claims** – 2,192 initial claims were processed during the week ending 7/5/14, an increase of 91 from the previous week, and an increase of 351 from a year ago. The number of initial claims filed to date is down 3.0 percent from last year and down 9.0 percent from two years ago.

**Continued Claims** – 10,919 continued claims were processed during the week of 7/5/14, an increase of 1,538 from the previous week and an increase of 83 from a year ago. The number of continued claims filed to date is down 5.1 percent from last year and down 15.5 percent from two years ago.

**Workshare** – gives employers an alternative to layoffs by allowing employees to work reduced hours and collect a percentage of regular UI benefits to compensate for lost pay. This week, 3 initial claims and 353 continued claims were processed. An estimated 1 layoff was prevented this week, as a result of Workshare.

**Exhaustions** – 248 individuals exhausted their regular payments this week, a decrease of 11 from the previous week and a decrease of 13 from a year ago.

### *Temporary Disability Insurance*

**Temporary Disability Insurance** – 627 initial claims and 7,496 continued claims were processed for Temporary Disability Insurance. The average weekly TDI payment is \$443 per week. Rhode Island is currently paying an average of 10.7 weeks per new claim. To date there have been 22,994 TDI initial claims filed.

**Temporary Caregiver Insurance** – Of the 627 TDI initial claims, 105 (16.7%) were TCI Claims. This week 309 TCI payments were issued totaling \$150,721. The average weekly TCI payment was \$488. Of the 22,994 TDI claims filed to date, 2,110 or 9.2% were TCI claims.

	Initial Claims			Continued Claims	TOTAL - Initial and Continued Claims			
	Total	New	Additional		Current Week	Previous Week	Year Ago	Two Years Ago
<b>Total - All programs*</b>	2,227	1,220	1,007	11,700	13,927	12,053	13,499	17,068
<b>UI Claims</b>	2,192	1,202	990	10,919	13,111	11,482	12,677	15,994
Change from:								
Previous Week	91	311	-220	1,538	1,629			
Year Ago	351	292	59	83	434			
Two Years Ago	319	115	204	-3,202	-2,883			
<b>Interstate-Liable</b>	32	18	14	428	460	443	504	472
<b>Workshare</b>	3	0	3	353	356	128	318	602
<b>Workshare Equivalency</b>	1	0	1	90	91	36	87	257
<b>UI Exhaustions</b>	-	-	-	248	248	259	261	353
<b>TDI Claims (Includes TCI)</b>	627	478	149	7,496	8,123	8,339	7,522	7,276
Change from:								
Previous Week	-277	-268	-9	61	-216			
Year Ago	219	159	60	382	601			

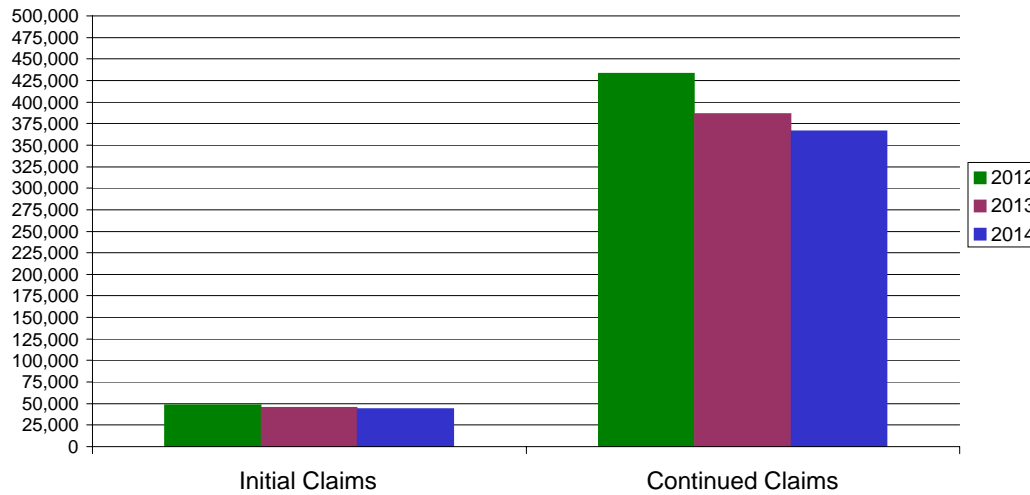
\* Includes UI, EUC08, Workshare & Interstate Liable.

Equal Opportunity Employer / Program / Auxiliary aids and services available upon request to individuals with disabilities / TTY via RI Relay 711.

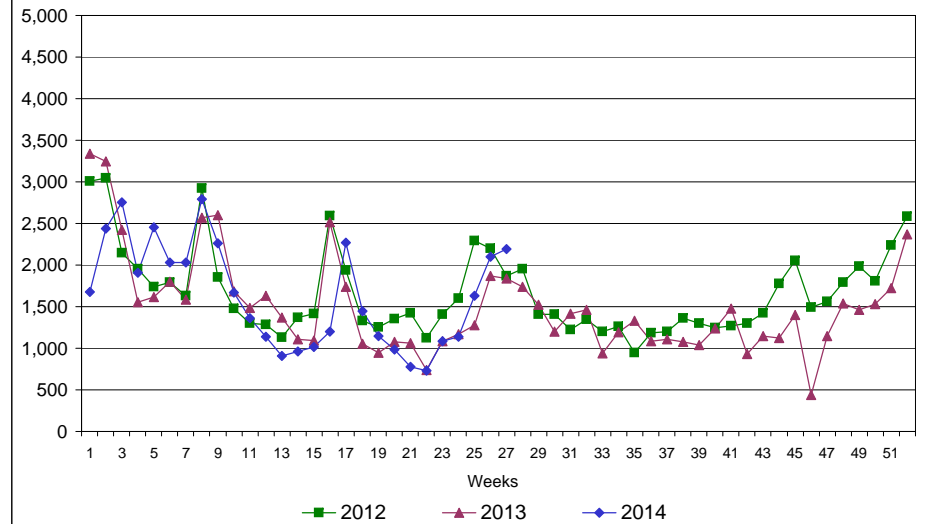
# Rhode Island Department of Labor and Training

## July 5, 2014

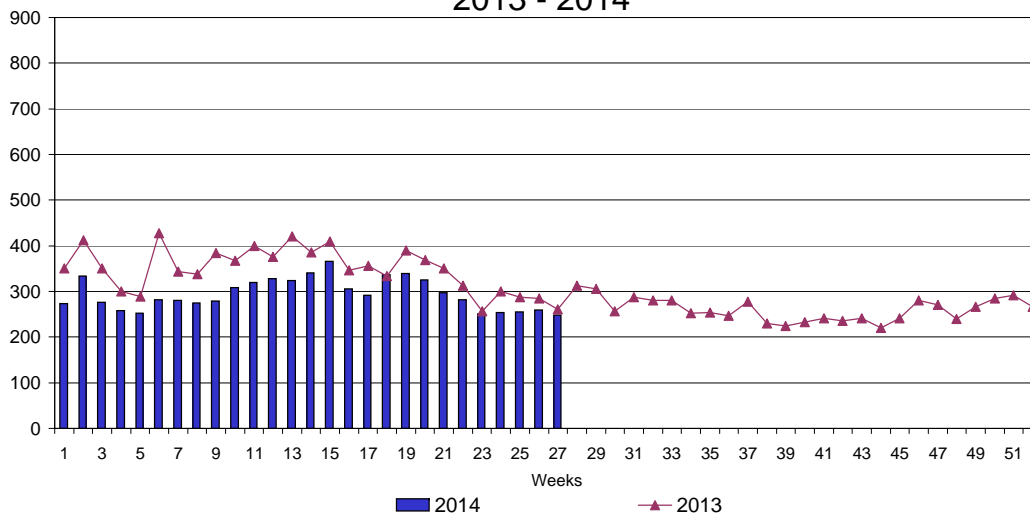
### UI Claims Comparison Year to Date



### UI Initial Claims 2012 - 2014



### UI Exhaustions 2013 - 2014



### TDI Claims Comparison Year to Date

