



## Rhode Island Department of Labor and Training

# *Weekly Update of Claims Activity*

**Week Ending: July 12, 2014**

### *Unemployment Insurance*

**Initial Claims** – 1,423 initial claims were processed during the week ending 7/12/14, a decrease of 769 from the previous week, and a decrease of 317 from a year ago. The number of initial claims filed to date is down 3.6 percent from last year and down 9.7 percent from two years ago.

**Continued Claims** – 11,685 continued claims were processed during the week of 7/12/14, an increase of 766 from the previous week and a decrease of 574 from a year ago. The number of continued claims filed to date is down 5.1 percent from last year and down 15.7 percent from two years ago.

**Workshare** – gives employers an alternative to layoffs by allowing employees to work reduced hours and collect a percentage of regular UI benefits to compensate for lost pay. This week, 57 initial claims and 250 continued claims were processed. An estimated 12 layoffs was prevented this week, as a result of Workshare.

**Exhaustions** – 203 individuals exhausted their regular payments this week, a decrease of 45 from the previous week and a decrease of 109 from a year ago.

### *Temporary Disability Insurance*

**Temporary Disability Insurance** – 886 initial claims and 7,184 continued claims were processed for Temporary Disability Insurance. The average weekly TDI payment is \$443 per week. Rhode Island is currently paying an average of 10.8 weeks per new claim. To date there have been 23,880 TDI initial claims filed.

**Temporary Caregiver Insurance** – Of the 886 TDI initial claims, 114 (12.9%) were TCI Claims. This week 245 TCI payments were issued totaling \$125,037. The average weekly TCI payment was \$510. Of the 23,880 TDI claims filed to date, 2,224 or 9.3% were TCI claims.

	Initial Claims			Continued Claims	TOTAL - Initial and Continued Claims			
	Total	New	Additional		Current Week	Previous Week	Year Ago	Two Years Ago
<b>Total - All programs*</b>	1,504	1,007	497	12,385	13,889	13,927	14,914	18,227
<b>UI Claims</b>	1,423	934	489	11,685	13,108	13,111	13,999	16,660
Change from:								
Previous Week	-769	-268	-501	766	-3			
Year Ago	-317	-8	-309	-574	-891			
Two Years Ago	-534	-199	-335	-3,018	-3,552			
<b>Interstate-Liable</b>	24	19	5	450	474	460	544	496
<b>Workshare</b>	57	54	3	250	307	356	371	1,071
<b>Workshare Equivalency</b>	12	11	1	67	79	91	91	310
<b>UI Exhaustions</b>	-	-	-	203	203	248	312	425
<b>TDI Claims (Includes TCI)</b>	886	691	195	7,184	8,070	8,123	8,008	7,384
Change from:								
Previous Week	259	213	46	-312	-53			
Year Ago	-310	-313	3	372	62			

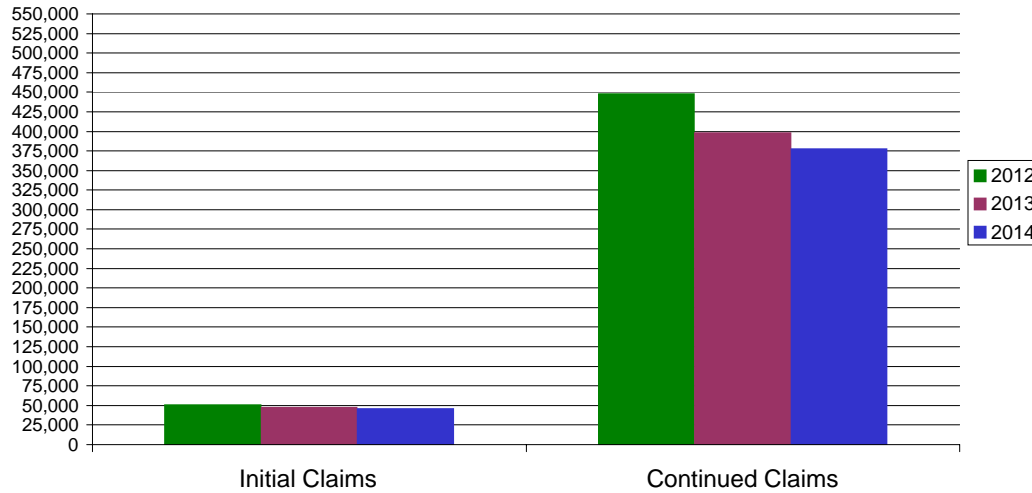
\* Includes UI, EUC08, Workshare & Interstate Liable.

Equal Opportunity Employer / Program / Auxiliary aids and services available upon request to individuals with disabilities / TTY via RI Relay 711.

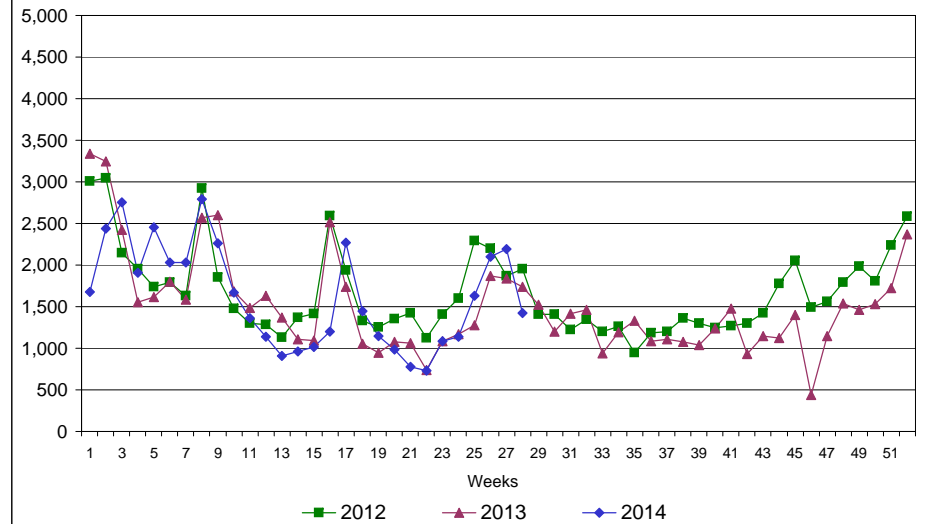
# Rhode Island Department of Labor and Training

## July 12, 2014

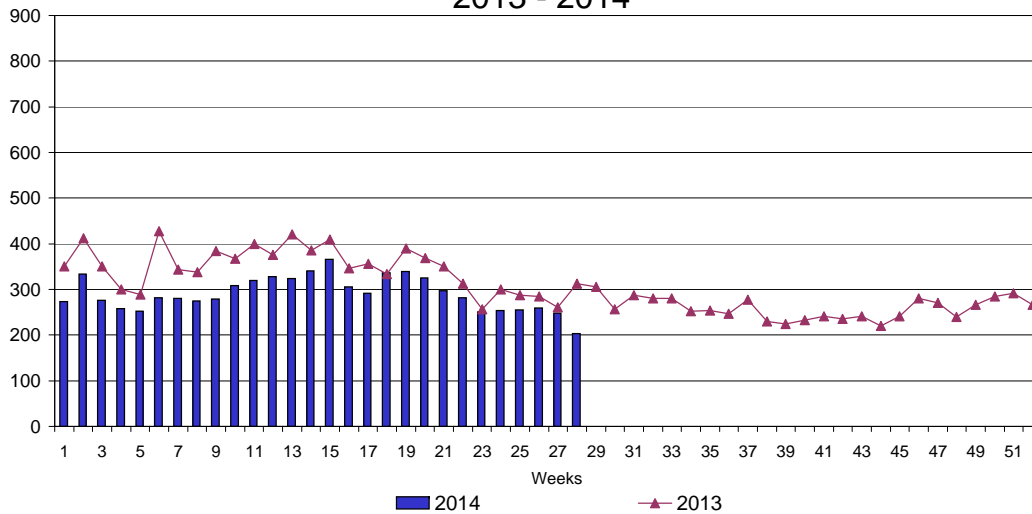
### UI Claims Comparison Year to Date



### UI Initial Claims 2012 - 2014



### UI Exhaustions 2013 - 2014



### TDI Claims Comparison Year to Date

