



Rhode Island Department of Labor and Training

Weekly Update of Claims Activity

Week Ending: July 19, 2014

Unemployment Insurance

Initial Claims – 988 initial claims were processed during the week ending 7/19/14, a decrease of 435 from the previous week, and a decrease of 536 from a year ago. The number of initial claims filed to date is down 4.6 percent from last year and down 10.2 percent from two years ago.

Continued Claims – 11,573 continued claims were processed during the week of 7/19/14, a decrease of 112 from the previous week and a decrease of 455 from a year ago. The number of continued claims filed to date is down 5.1 percent from last year and down 15.9 percent from two years ago.

Workshare – gives employers an alternative to layoffs by allowing employees to work reduced hours and collect a percentage of regular UI benefits to compensate for lost pay. This week, 11 initial claims and 271 continued claims were processed. An estimated 4 layoffs was prevented this week, as a result of Workshare.

Exhaustions – 267 individuals exhausted their regular payments this week, an increase of 64 from the previous week and a decrease of 39 from a year ago.

Temporary Disability Insurance

Temporary Disability Insurance – 1,099 initial claims and 7,522 continued claims were processed for Temporary Disability Insurance. The average weekly TDI payment is \$443 per week. Rhode Island is currently paying an average of 10.7 weeks per new claim. To date there have been 24,979 TDI initial claims filed.

Temporary Caregiver Insurance – Of the 1,099 TDI initial claims, 136 (12.4%) were TCI Claims. This week 308 TCI payments were issued totaling \$158,580. The average weekly TCI payment was \$515. Of the 24,979 TDI claims filed to date, 2,364 or 9.5% were TCI claims.

	Initial Claims			Continued Claims	TOTAL - Initial and Continued Claims			
	Total	New	Additional		Current Week	Previous Week	Year Ago	Two Years Ago
Total - All programs*	1,016	598	418	12,311	13,327	13,889	14,648	17,214
UI Claims	988	576	412	11,573	12,561	13,108	13,552	16,134
Change from:								
Previous Week	-435	-358	-77	-112	-547			
Year Ago	-536	-317	-219	-455	-991			
Two Years Ago	-421	-281	-140	-3,152	-3,573			
Interstate-Liable	17	12	5	467	484	474	541	495
Workshare	11	10	1	271	282	307	555	585
Workshare Equivalency	4	4	0	81	85	79	144	203
UI Exhaustions	-	-	-	267	267	203	306	427
TDI Claims (Includes TCI)	1,099	880	219	7,522	8,621	8,070	7,213	8,826
Change from:								
Previous Week	213	189	24	338	551			
Year Ago	448	340	108	960	1,408			

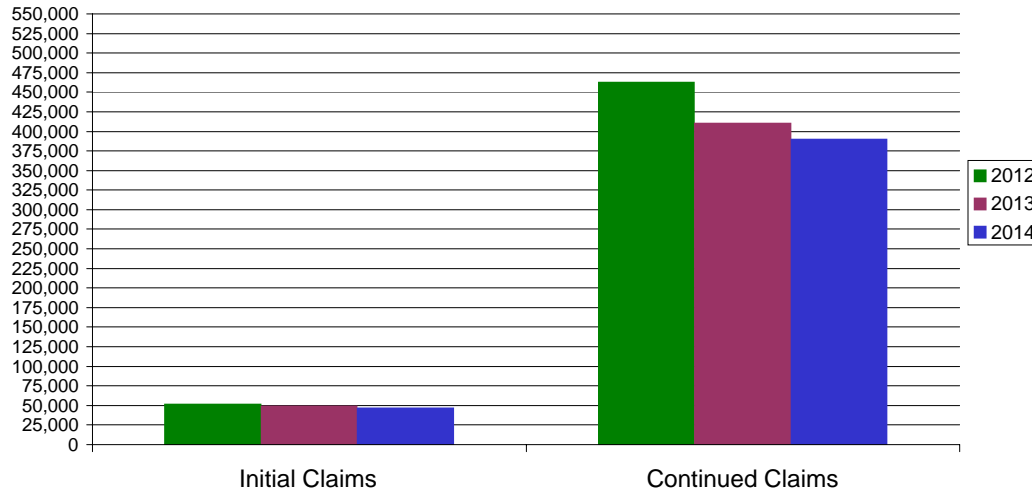
* Includes UI, EUC08, Workshare & Interstate Liable.

Equal Opportunity Employer / Program / Auxiliary aids and services available upon request to individuals with disabilities / TTY via RI Relay 711.

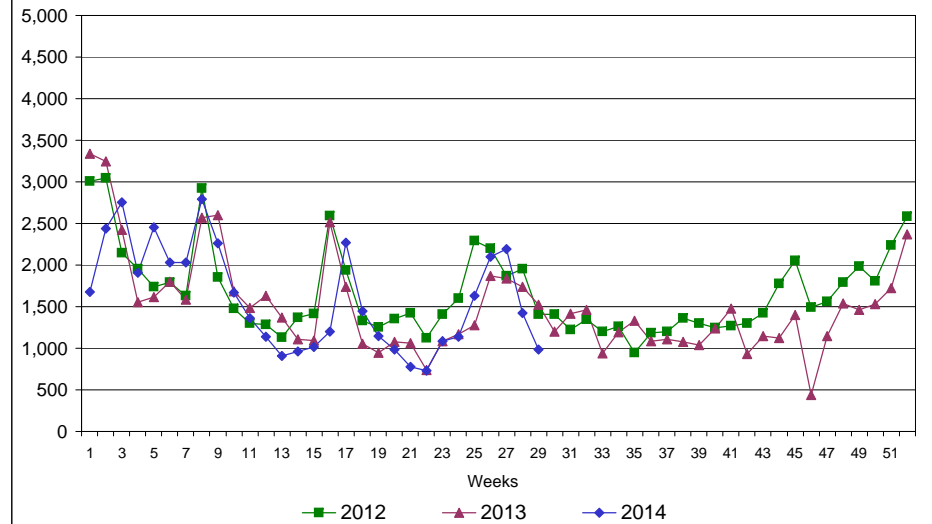
Rhode Island Department of Labor and Training

July 19, 2014

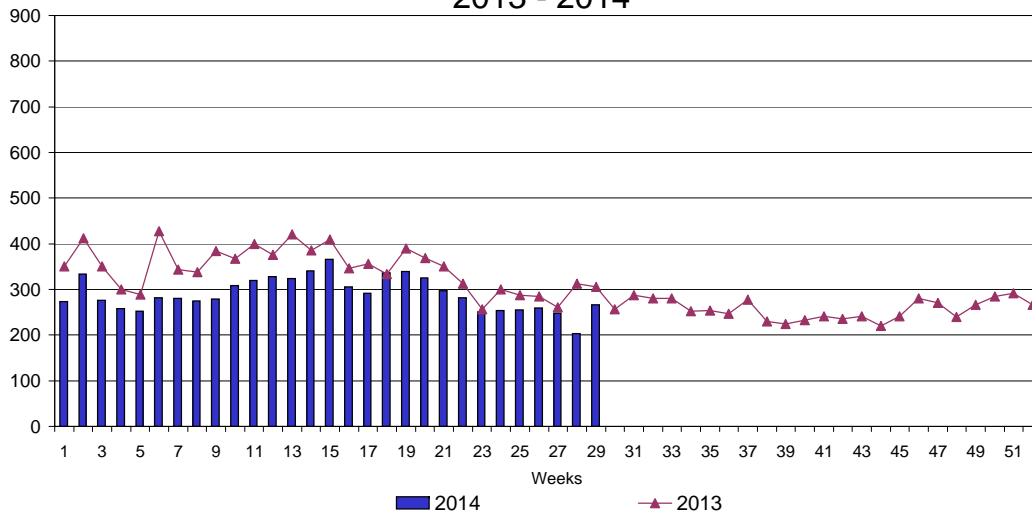
UI Claims Comparison Year to Date



UI Initial Claims 2012 - 2014



UI Exhaustions 2013 - 2014



TDI Claims Comparison Year to Date

