



## Rhode Island Department of Labor and Training

# *Weekly Update of Claims Activity*

*Week Ending: July 26, 2014*

### *Unemployment Insurance*

**Initial Claims** – 1,093 initial claims were processed during the week ending 7/26/14, an increase of 105 from the previous week, and a decrease of 104 from a year ago. The number of initial claims filed to date is down 4.7 percent from last year and down 10.6 percent from two years ago.

**Continued Claims** – 11,296 continued claims were processed during the week of 7/26/14, a decrease of 277 from the previous week and a decrease of 695 from a year ago. The number of continued claims filed to date is down 5.1 percent from last year and down 16.0 percent from two years ago.

**Workshare** – gives employers an alternative to layoffs by allowing employees to work reduced hours and collect a percentage of regular UI benefits to compensate for lost pay. This week, 18 initial claims and 196 continued claims were processed. An estimated 4 layoffs was prevented this week, as a result of Workshare.

**Exhaustions** – 245 individuals exhausted their regular payments this week, a decrease of 22 from the previous week and a decrease of 11 from a year ago.

### *Temporary Disability Insurance*

**Temporary Disability Insurance** – 1,037 initial claims and 7,756 continued claims were processed for Temporary Disability Insurance. The average weekly TDI payment is \$453 per week. Rhode Island is currently paying an average of 10.6 weeks per new claim. To date there have been 26,016 TDI initial claims filed.

**Temporary Caregiver Insurance** – Of the 1,037 TDI initial claims, 135 (13.0%) were TCI Claims. This week 367 TCI payments were issued totaling \$195,829. The average weekly TCI payment was \$533. Of the 26,016 TDI claims filed to date, 2,504 or 9.6% were TCI claims.

	Initial Claims			Continued Claims	TOTAL - Initial and Continued Claims			
	Total	New	Additional		Current Week	Previous Week	Year Ago	Two Years Ago
<b>Total - All programs*</b>	1,147	757	390	11,976	13,123	13,327	14,320	17,275
<b>UI Claims</b>	1,093	719	374	11,296	12,389	12,561	13,188	15,866
Change from:								
Previous Week	105	143	-38	-277	-172			
Year Ago	-104	-42	-62	-695	-799			
Two Years Ago	-312	-83	-229	-3,165	-3,477			
<b>Interstate-Liable</b>	36	23	13	484	520	484	515	490
<b>Workshare</b>	18	15	3	196	214	282	617	919
<b>Workshare Equivalency</b>	4	3	1	58	62	85	139	238
<b>UI Exhaustions</b>	-	-	-	245	245	267	256	405
<b>TDI Claims (Includes TCI)</b>	1,037	840	197	7,756	8,793	8,621	8,020	8,346
Change from:								
Previous Week	-62	-40	-22	234	172			
Year Ago	373	295	78	400	773			

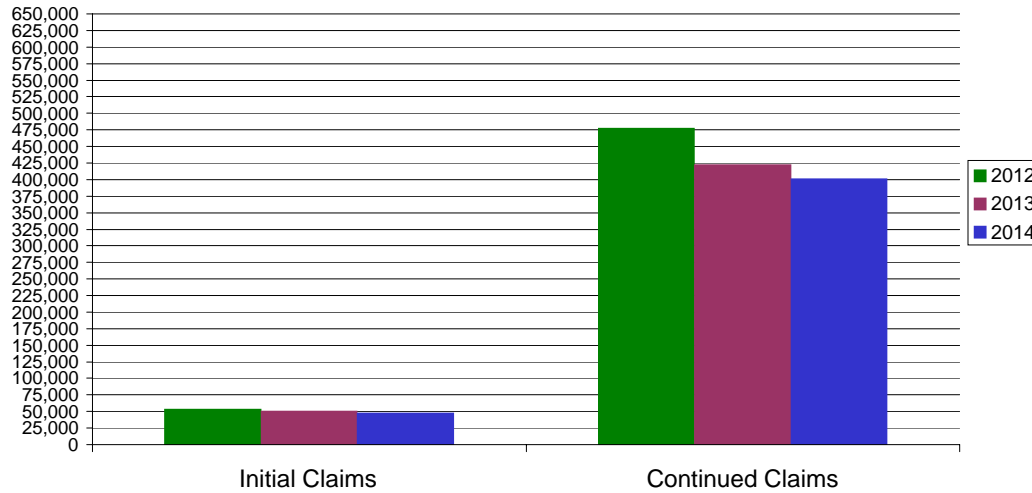
\* Includes UI, EUC08, Workshare & Interstate Liable.

Equal Opportunity Employer / Program / Auxiliary aids and services available upon request to individuals with disabilities / TTY via RI Relay 711.

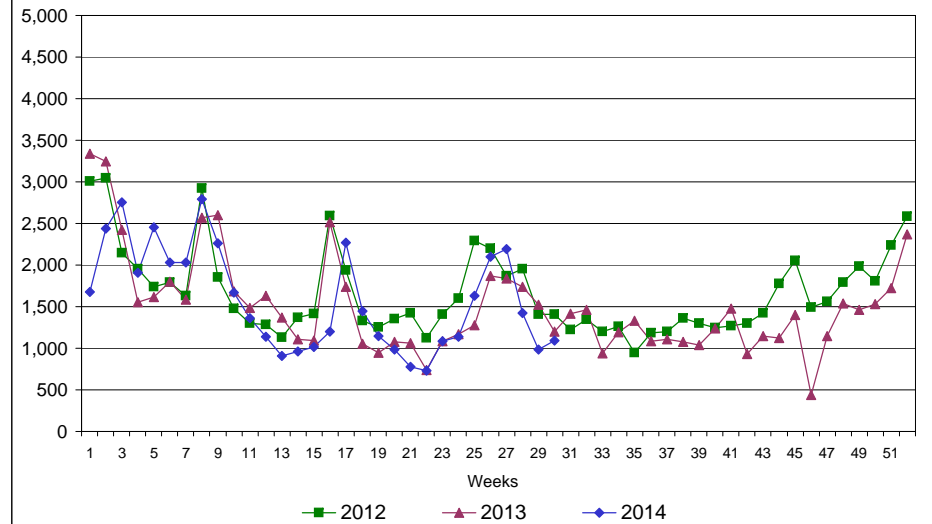
# Rhode Island Department of Labor and Training

## July 26, 2014

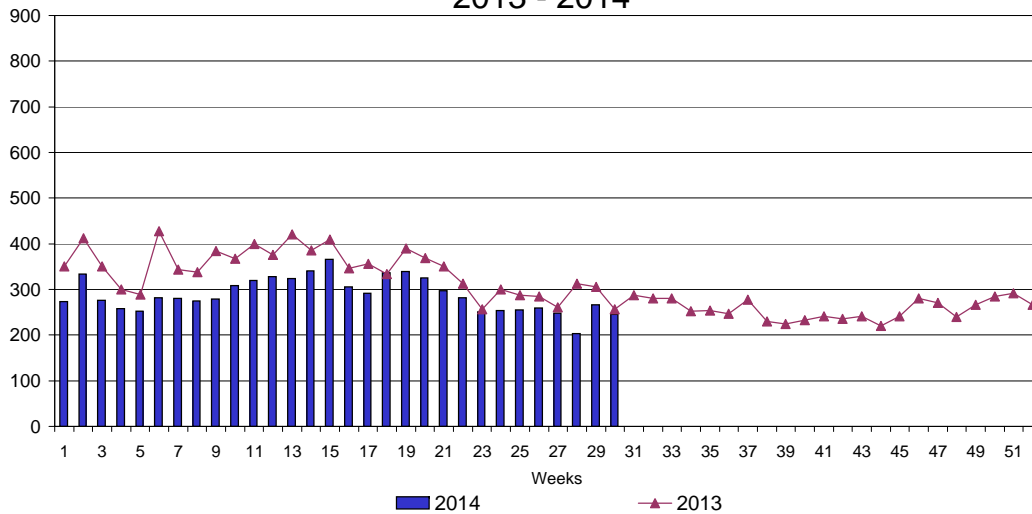
### UI Claims Comparison Year to Date



### UI Initial Claims 2012 - 2014



### UI Exhaustions 2013 - 2014



### TDI Claims Comparison Year to Date

