



## Rhode Island Department of Labor and Training

# *Weekly Update of Claims Activity*

*Week Ending: August 2, 2014*

### *Unemployment Insurance*

**Initial Claims** – 927 initial claims were processed during the week ending 8/2/14, a decrease of 166 from the previous week, and a decrease of 489 from a year ago. The number of initial claims filed to date is down 5.5 percent from last year and down 10.9 percent from two years ago.

**Continued Claims** – 11,122 continued claims were processed during the week of 8/2/14, a decrease of 174 from the previous week and a decrease of 1,235 from a year ago. The number of continued claims filed to date is down 5.2 percent from last year and down 16.1 percent from two years ago.

**Workshare** – gives employers an alternative to layoffs by allowing employees to work reduced hours and collect a percentage of regular UI benefits to compensate for lost pay. This week, there were not any initial claims and 188 continued claims were processed. There were not any layoffs prevented this week, as a result of Workshare.

**Exhaustions** – 212 individuals exhausted their regular payments this week, a decrease of 33 from the previous week and a decrease of 76 from a year ago.

### *Temporary Disability Insurance*

**Temporary Disability Insurance** – 547 initial claims and 8,287 continued claims were processed for Temporary Disability Insurance. The average weekly TDI payment is \$446 per week. Rhode Island is currently paying an average of 10.7 weeks per new claim. To date there have been 26,563 TDI initial claims filed.

**Temporary Caregiver Insurance** – Of the 547 TDI initial claims, 109 (19.9%) were TCI Claims. This week 399 TCI payments were issued totaling \$207,785. The average weekly TCI payment was \$520. Of the 26,563 TDI claims filed to date, 2,613 or 9.8% were TCI claims.

	Initial Claims			Continued Claims	TOTAL - Initial and Continued Claims			
	Total	New	Additional		Current Week	Previous Week	Year Ago	Two Years Ago
<b>Total - All programs*</b>	941	594	347	11,793	12,734	13,123	14,743	16,294
<b>UI Claims</b>	927	587	340	11,122	12,049	12,389	13,773	15,114
Change from:								
Previous Week	-166	-132	-34	-174	-340			
Year Ago	-489	-380	-109	-1,235	-1,724			
Two Years Ago	-295	-96	-199	-2,770	-3,065			
<b>Interstate-Liable</b>	14	7	7	483	497	520	551	485
<b>Workshare</b>	0	0	0	188	188	214	419	695
<b>Workshare Equivalency</b>	0	0	0	49	49	62	94	181
<b>UI Exhaustions</b>	-	-	-	212	212	245	288	342
<b>TDI Claims (Includes TCI)</b>	547	417	130	8,287	8,834	8,793	8,824	9,474
Change from:								
Previous Week	-490	-423	-67	531	41			
Year Ago	-306	-298	-8	316	10			

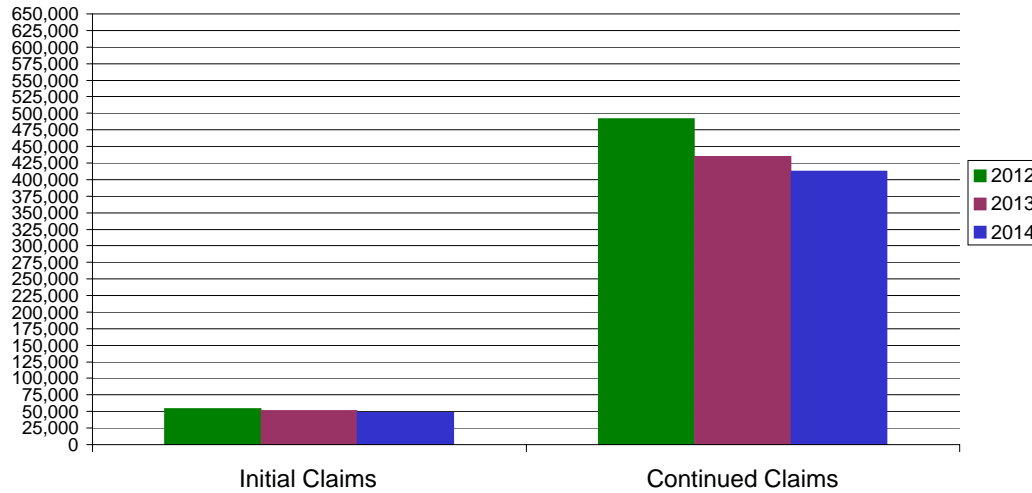
\* Includes UI, EUC08, Workshare & Interstate Liable.

Equal Opportunity Employer / Program / Auxiliary aids and services available upon request to individuals with disabilities / TTY via RI Relay 711.

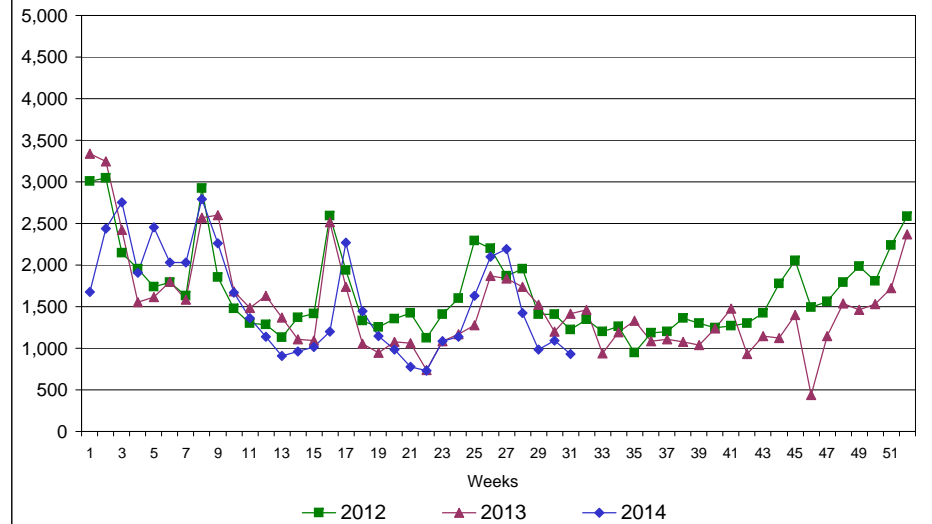
# Rhode Island Department of Labor and Training

## August 2, 2014

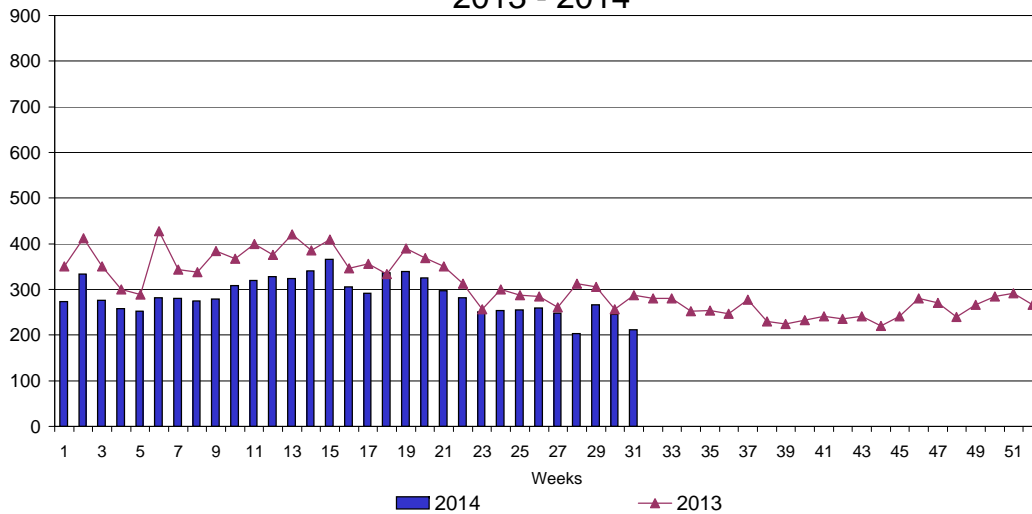
### UI Claims Comparison Year to Date



### UI Initial Claims 2012 - 2014



### UI Exhaustions 2013 - 2014



### TDI Claims Comparison Year to Date

