



Rhode Island Department of Labor and Training

Weekly Update of Claims Activity

Week Ending: August 9, 2014

Unemployment Insurance

Initial Claims – 1,177 initial claims were processed during the week ending 8/9/14, an increase of 250 from the previous week, and a decrease of 287 from a year ago. The number of initial claims filed to date is down 5.9 percent from last year and down 10.9 percent from two years ago.

Continued Claims – 11,265 continued claims were processed during the week of 8/9/14, an increase of 143 from the previous week and a decrease of 1,064 from a year ago. The number of continued claims filed to date is down 5.3 percent from last year and down 16.2 percent from two years ago.

Workshare – gives employers an alternative to layoffs by allowing employees to work reduced hours and collect a percentage of regular UI benefits to compensate for lost pay. This week, 28 initial claims and 450 continued claims were processed. An estimated 6 layoffs were prevented this week, as a result of Workshare.

Exhaustions – 253 individuals exhausted their regular payments this week, an increase of 41 from the previous week and a decrease of 27 from a year ago.

Temporary Disability Insurance

Temporary Disability Insurance – 972 initial claims and 8,428 continued claims were processed for Temporary Disability Insurance. The average weekly TDI payment is \$446 per week. Rhode Island is currently paying an average of 10.8 weeks per new claim. To date there have been 27,535 TDI initial claims filed.

Temporary Caregiver Insurance – Of the 972 TDI initial claims, 116 (11.9%) were TCI Claims. This week 314 TCI payments were issued totaling \$154,584. The average weekly TCI payment was \$492. Of the 27,535 TDI claims filed to date, 2,729 or 9.9% were TCI claims.

	Initial Claims			Continued Claims	TOTAL - Initial and Continued Claims			
	Total	New	Additional		Current Week	Previous Week	Year Ago	Two Years Ago
Total - All programs*	1,228	796	432	12,185	13,413	12,734	14,476	16,129
UI Claims	1,177	750	427	11,265	12,442	12,049	13,793	14,869
Change from:								
Previous Week	250	163	87	143	393			
Year Ago	-287	-216	-71	-1,064	-1,351			
Two Years Ago	-172	-13	-159	-2,255	-2,427			
Interstate-Liable	23	18	5	470	493	497	610	476
Workshare	28	28	0	450	478	188	73	784
Workshare Equivalency	6	6	0	121	127	49	21	207
UI Exhaustions	-	-	-	253	253	212	280	376
TDI Claims (Includes TCI)	972	755	217	8,428	9,400	8,834	8,154	8,372
Change from:								
Previous Week	425	338	87	141	566			
Year Ago	-80	-154	74	1,326	1,246			

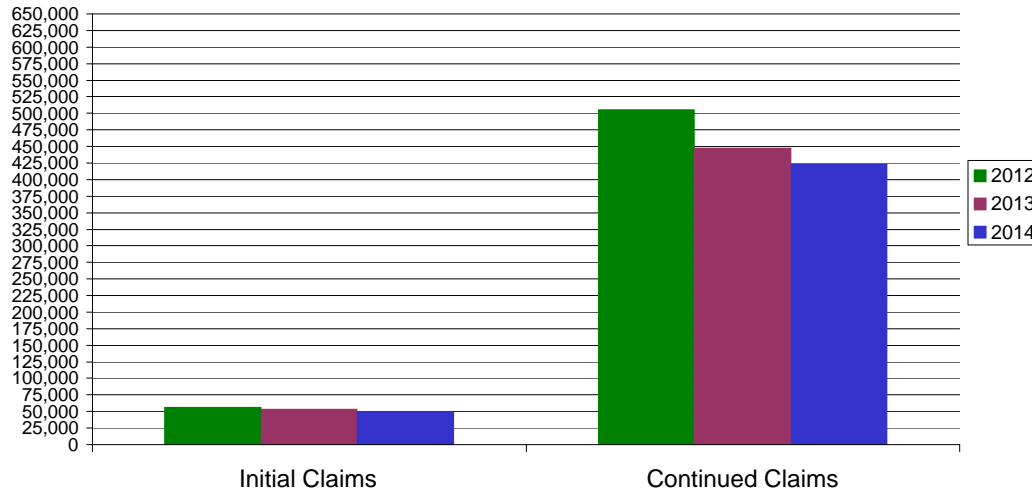
* Includes UI, EUC08, Workshare & Interstate Liable.

Equal Opportunity Employer / Program / Auxiliary aids and services available upon request to individuals with disabilities / TTY via RI Relay 711.

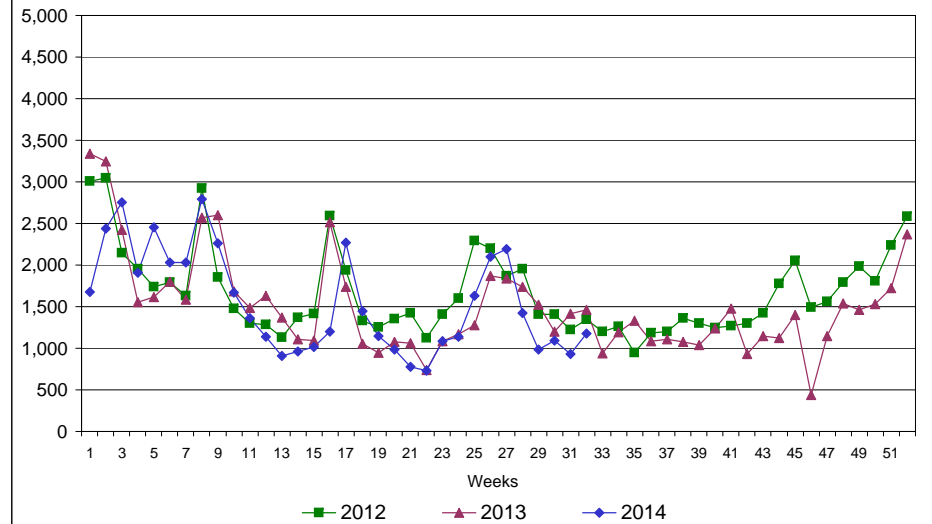
Rhode Island Department of Labor and Training

August 9, 2014

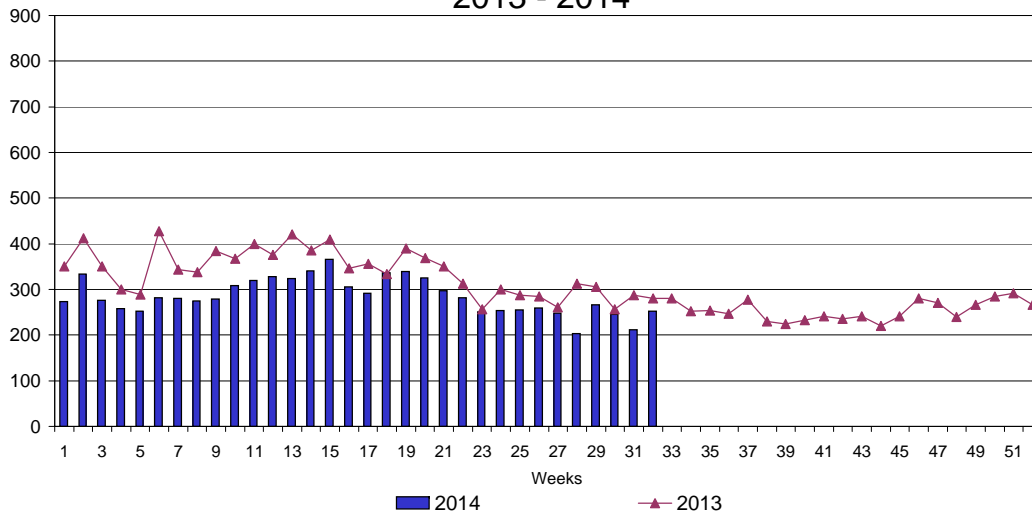
UI Claims Comparison Year to Date



UI Initial Claims 2012 - 2014



UI Exhaustions 2013 - 2014



TDI Claims Comparison Year to Date

