



Rhode Island Department of Labor and Training

Weekly Update of Claims Activity

Week Ending: August 23, 2014

Unemployment Insurance

Initial Claims – 946 initial claims were processed during the week ending 8/23/14, an increase of 120 from the previous week, and a decrease of 245 from a year ago. The number of initial claims filed to date is down 6.3 percent from last year and down 11.6 percent from two years ago.

Continued Claims – 11,140 continued claims were processed during the week of 8/23/14, an increase of 134 from the previous week and a decrease of 1,252 from a year ago. The number of continued claims filed to date is down 5.5 percent from last year and down 16.1 percent from two years ago.

Workshare – gives employers an alternative to layoffs by allowing employees to work reduced hours and collect a percentage of regular UI benefits to compensate for lost pay. This week, 17 initial claims and 393 continued claims were processed. An estimated 3 layoffs were prevented this week, as a result of Workshare.

Exhaustions – 226 individuals exhausted their regular payments this week, a decrease of 12 from the previous week and a decrease of 26 from a year ago.

Temporary Disability Insurance

Temporary Disability Insurance – 1,303 initial claims and 7,627 continued claims were processed for Temporary Disability Insurance. The average weekly TDI payment is \$443 per week. Rhode Island is currently paying an average of 10.6 weeks per new claim. To date there have been 29,706 TDI initial claims filed.

Temporary Caregiver Insurance – Of the 1,303 TDI initial claims, 112 (8.6%) were TCI Claims. This week 303 TCI payments were issued totaling \$153,572. The average weekly TCI payment was \$507. Of the 29,706 TDI claims filed to date, 2,924 or 9.8% were TCI claims.

	Initial Claims			Continued Claims	TOTAL - Initial and Continued Claims			
	Total	New	Additional		Current Week	Previous Week	Year Ago	Two Years Ago
Total - All programs*	993	582	411	12,070	13,063	12,971	14,956	15,061
UI Claims	946	553	393	11,140	12,086	11,832	13,583	14,023
Change from:								
Previous Week	120	92	28	134	254			
Year Ago	-245	-74	-171	-1,252	-1,497			
Two Years Ago	-318	-62	-256	-1,619	-1,937			
Interstate-Liable	30	14	16	537	567	482	609	464
Workshare	17	15	2	393	410	657	764	574
Workshare Equivalency	3	3	0	92	95	147	178	170
UI Exhaustions	-	-	-	226	226	238	252	349
TDI Claims (Includes TCI)	1,303	1,031	272	7,627	8,930	7,745	8,687	8,626
Change from:								
Previous Week	435	364	71	750	1,185			
Year Ago	693	520	173	-450	243			

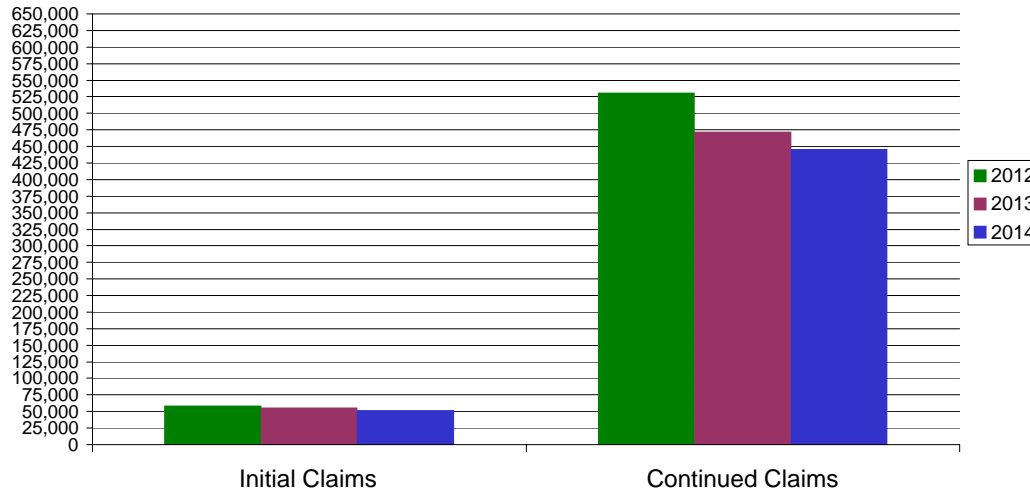
* Includes UI, EUC08, Workshare & Interstate Liable.

Equal Opportunity Employer / Program / Auxiliary aids and services available upon request to individuals with disabilities / TTY via RI Relay 711.

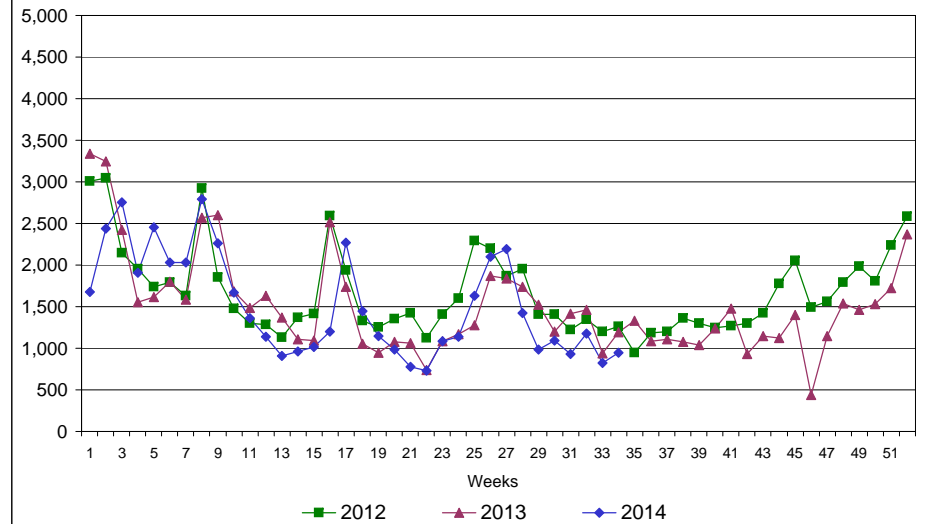
Rhode Island Department of Labor and Training

August 23, 2014

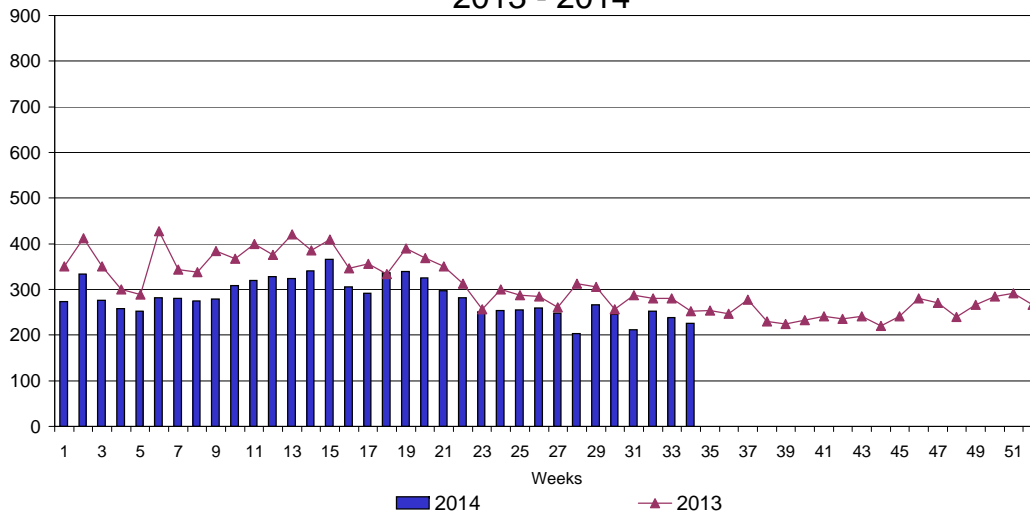
UI Claims Comparison Year to Date



UI Initial Claims 2012 - 2014



UI Exhaustions 2013 - 2014



TDI Claims Comparison Year to Date

