



Rhode Island Department of Labor and Training

Weekly Update of Claims Activity

Week Ending: August 30, 2014

Unemployment Insurance

Initial Claims – 1,000 initial claims were processed during the week ending 8/30/14, an increase of 54 from the previous week, and a decrease of 331 from a year ago. The number of initial claims filed to date is down 6.8 percent from last year and down 11.3 percent from two years ago.

Continued Claims – 10,893 continued claims were processed during the week of 8/30/14, a decrease of 247 from the previous week and a decrease of 1,272 from a year ago. The number of continued claims filed to date is down 5.6 percent from last year and down 16.1 percent from two years ago.

Workshare – gives employers an alternative to layoffs by allowing employees to work reduced hours and collect a percentage of regular UI benefits to compensate for lost pay. This week, 15 initial claims and 432 continued claims were processed. An estimated 6 layoffs were prevented this week, as a result of Workshare.

Exhaustions – 210 individuals exhausted their regular payments this week, a decrease of 16 from the previous week and a decrease of 44 from a year ago.

Temporary Disability Insurance

Temporary Disability Insurance – 562 initial claims and 8,091 continued claims were processed for Temporary Disability Insurance. The average weekly TDI payment is \$441 per week. Rhode Island is currently paying an average of 10.7 weeks per new claim. To date there have been 30,268 TDI initial claims filed.

Temporary Caregiver Insurance – Of the 562 TDI initial claims, 132 (23.5%) were TCI Claims. This week 313 TCI payments were issued totaling \$159,812. The average weekly TCI payment was \$511. Of the 30,268 TDI claims filed to date, 3,056 or 10.1% were TCI claims.

	Initial Claims			Continued Claims	TOTAL - Initial and Continued Claims			
	Total	New	Additional		Current Week	Previous Week	Year Ago	Two Years Ago
Total - All programs*	1,029	645	384	11,809	12,838	13,063	15,245	15,071
UI Claims	1,000	623	377	10,893	11,893	12,086	13,496	13,917
Change from:								
Previous Week	54	70	-16	-247	-193			
Year Ago	-331	-174	-157	-1,272	-1,603			
Two Years Ago	57	107	-50	-2,081	-2,024			
Interstate-Liable	14	8	6	484	498	567	625	478
Workshare	15	14	1	432	447	410	1,124	676
Workshare Equivalency	6	5	1	100	106	95	271	194
UI Exhaustions	-	-	-	210	210	226	254	295
TDI Claims (Includes TCI)	562	429	133	8,091	8,653	8,930	8,798	8,781
Change from:								
Previous Week	-741	-602	-139	464	-277			
Year Ago	-458	-424	-34	313	-145			

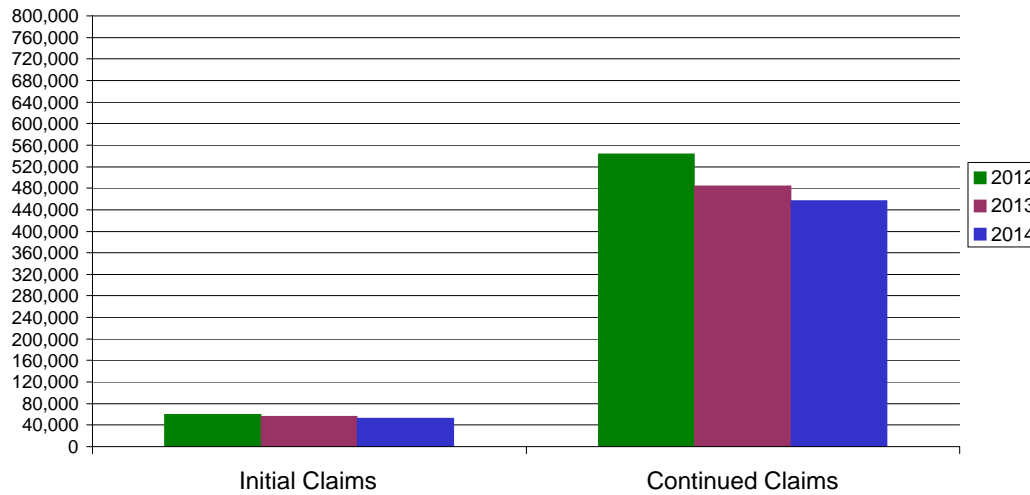
* Includes UI, EUC08, Workshare & Interstate Liable.

Equal Opportunity Employer / Program / Auxiliary aids and services available upon request to individuals with disabilities / TTY via RI Relay 711.

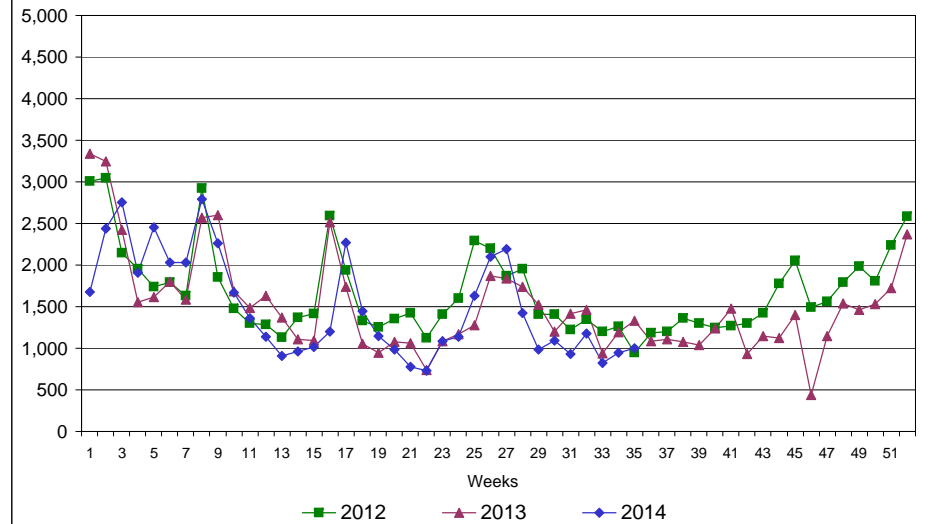
Rhode Island Department of Labor and Training

August 30, 2014

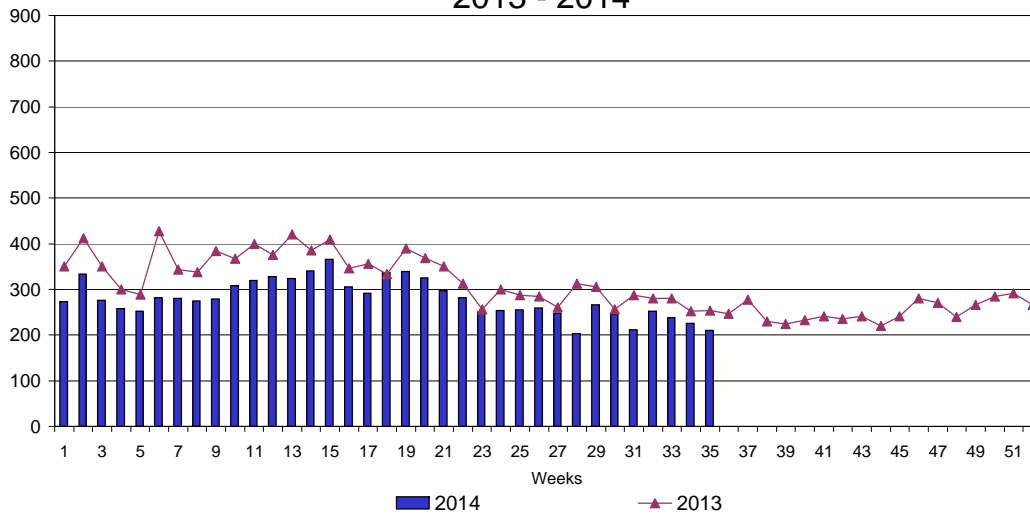
UI Claims Comparison Year to Date



UI Initial Claims 2012 - 2014



UI Exhaustions 2013 - 2014



TDI Claims Comparison Year to Date

