



## Rhode Island Department of Labor and Training

# *Weekly Update of Claims Activity*

*Week Ending: September 20, 2014*

### *Unemployment Insurance*

**Initial Claims** – 1,008 initial claims were processed during the week ending 9/20/14, a decrease of 44 from the previous week, and a decrease of 72 from a year ago. The number of initial claims filed to date is down 7.0 percent from last year and down 12.0 percent from two years ago.

**Continued Claims** – 8,073 continued claims were processed during the week of 9/20/14, a decrease of 254 from the previous week and a decrease of 1,369 from a year ago. The number of continued claims filed to date is down 6.1 percent from last year and down 16.4 percent from two years ago.

**Workshare** – gives employers an alternative to layoffs by allowing employees to work reduced hours and collect a percentage of regular UI benefits to compensate for lost pay. This week, 2 initial claims and 269 continued claims were processed. There were not any layoffs prevented this week, as a result of Workshare.

**Exhaustions** – 206 individuals exhausted their regular payments this week, a decrease of 21 from the previous week and a decrease of 24 from a year ago.

### *Temporary Disability Insurance*

**Temporary Disability Insurance** – 1,462 initial claims and 7,635 continued claims were processed for Temporary Disability Insurance. The average weekly TDI payment is \$437 per week. Rhode Island is currently paying an average of 10.6 weeks per new claim. To date there have been 33,452 TDI initial claims filed.

**Temporary Caregiver Insurance** – Of the 1,462 TDI initial claims, 145 (9.9%) were TCI Claims. This week 321 TCI payments were issued totaling \$166,046. The average weekly TCI payment was \$517. Of the 33,452 TDI claims filed to date, 3,642 or 10.9% were TCI claims.

	Initial Claims			Continued Claims	TOTAL - Initial and Continued Claims			
	Total	New	Additional		Current Week	Previous Week	Year Ago	Two Years Ago
<b>Total - All programs*</b>	1,045	696	349	8,795	9,840	10,309	11,763	13,169
<b>UI Claims</b>	1,008	671	337	8,073	9,081	9,379	10,522	11,963
Change from:								
Previous Week	-44	-1	-43	-254	-298			
Year Ago	-72	-40	-32	-1,369	-1,441			
Two Years Ago	-356	-270	-86	-2,526	-2,882			
<b>Interstate-Liable</b>	35	25	10	453	488	477	646	458
<b>Workshare</b>	2	0	2	269	271	453	595	748
<b>Workshare Equivalency</b>	0	0	0	73	73	122	132	201
<b>UI Exhaustions</b>	-	-	-	206	206	227	230	324
<b>TDI Claims (Includes TCI)</b>	1,462	1,134	328	7,635	9,097	8,978	8,549	8,450
Change from:								
Previous Week	446	365	81	-327	119			
Year Ago	496	323	173	52	548			

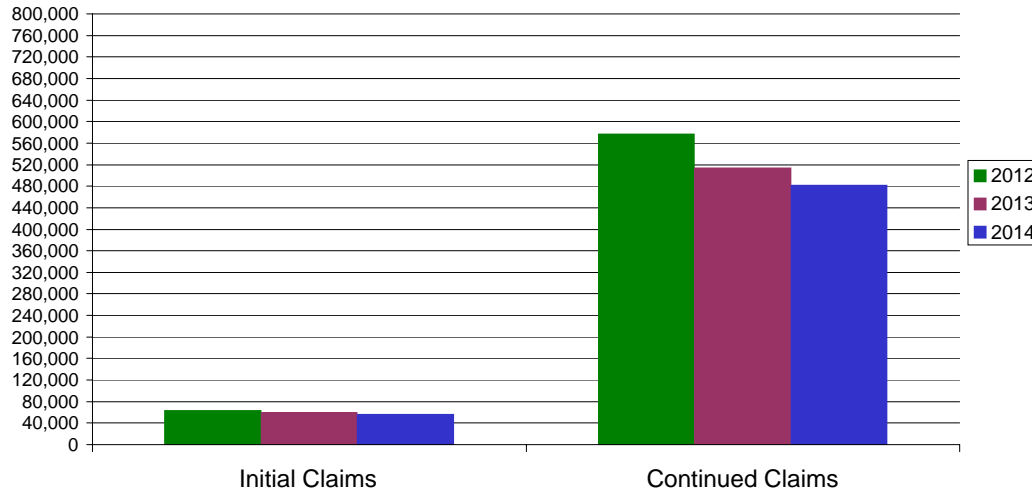
\* Includes UI, EUC08, Workshare & Interstate Liable.

Equal Opportunity Employer / Program / Auxiliary aids and services available upon request to individuals with disabilities / TTY via RI Relay 711.

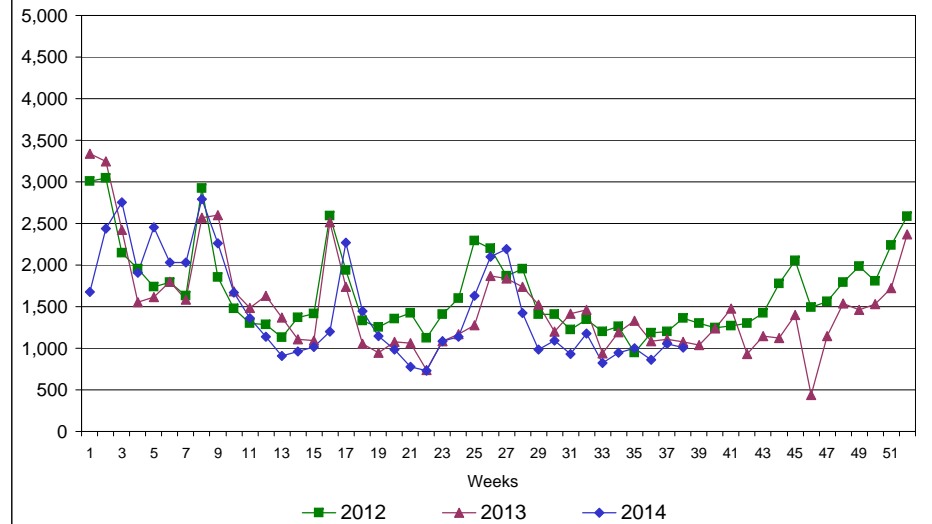
# Rhode Island Department of Labor and Training

## September 20, 2014

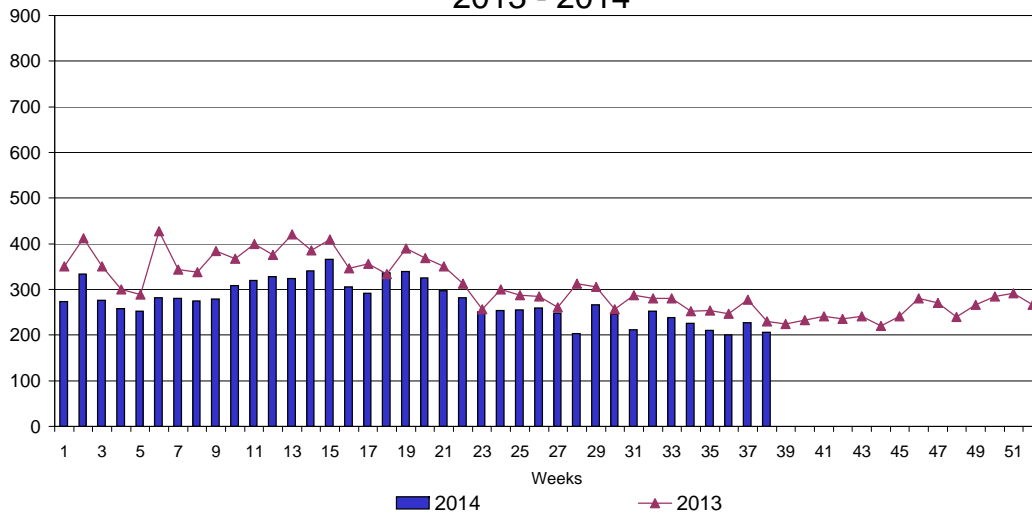
### UI Claims Comparison Year to Date



### UI Initial Claims 2012 - 2014



### UI Exhaustions 2013 - 2014



### TDI Claims Comparison Year to Date

