



## Rhode Island Department of Labor and Training

# *Weekly Update of Claims Activity*

*Week Ending: October 4, 2014*

### *Unemployment Insurance*

**Initial Claims** – 994 initial claims were processed during the week ending 10/4/14, an increase of 60 from the previous week, and a decrease of 242 from a year ago. The number of initial claims filed to date is down 7.3 percent from last year and down 12.5 percent from two years ago.

**Continued Claims** – 7,953 continued claims were processed during the week of 10/4/14, a decrease of 30 from the previous week and a decrease of 982 from a year ago. The number of continued claims filed to date is down 6.3 percent from last year and down 16.6 percent from two years ago.

**Workshare** – gives employers an alternative to layoffs by allowing employees to work reduced hours and collect a percentage of regular UI benefits to compensate for lost pay. This week, 32 initial claims and 235 continued claims were processed. An estimated 8 layoffs were prevented this week, as a result of Workshare.

**Exhaustions** – 216 individuals exhausted their regular payments this week, an increase of 15 from the previous week and a decrease of 17 from a year ago.

### *Temporary Disability Insurance*

**Temporary Disability Insurance** – 883 initial claims and 7,401 continued claims were processed for Temporary Disability Insurance. The average weekly TDI payment is \$442 per week. Rhode Island is currently paying an average of 10.6 weeks per new claim. To date there have been 34,942 TDI initial claims filed.

**Temporary Caregiver Insurance** – Of the 883 TDI initial claims, 136 (15.4%) were TCI Claims. This week 390 TCI payments were issued totaling \$206,697. The average weekly TCI payment was \$530. Of the 34,942 TDI claims filed to date, 3,714 or 10.6% were TCI claims.

	Initial Claims			Continued Claims	TOTAL - Initial and Continued Claims			
	Total	New	Additional		Current Week	Previous Week	Year Ago	Two Years Ago
<b>Total - All programs*</b>	1,058	670	388	8,623	9,681	9,763	11,351	13,384
<b>UI Claims</b>	994	621	373	7,953	8,947	8,917	10,171	11,540
Change from:								
Previous Week	60	13	47	-30	30			
Year Ago	-242	-175	-67	-982	-1,224			
Two Years Ago	-249	-152	-97	-2,344	-2,593			
<b>Interstate-Liable</b>	32	17	15	435	467	498	622	533
<b>Workshare</b>	32	32	0	235	267	348	558	1,311
<b>Workshare Equivalency</b>	8	8	0	64	72	83	124	356
<b>UI Exhaustions</b>	-	-	-	216	216	201	233	295
<b>TDI Claims (Includes TCI)</b>	883	679	204	7,401	8,284	7,978	8,787	9,007
Change from:								
Previous Week	276	199	77	30	306			
Year Ago	173	86	87	-676	-503			

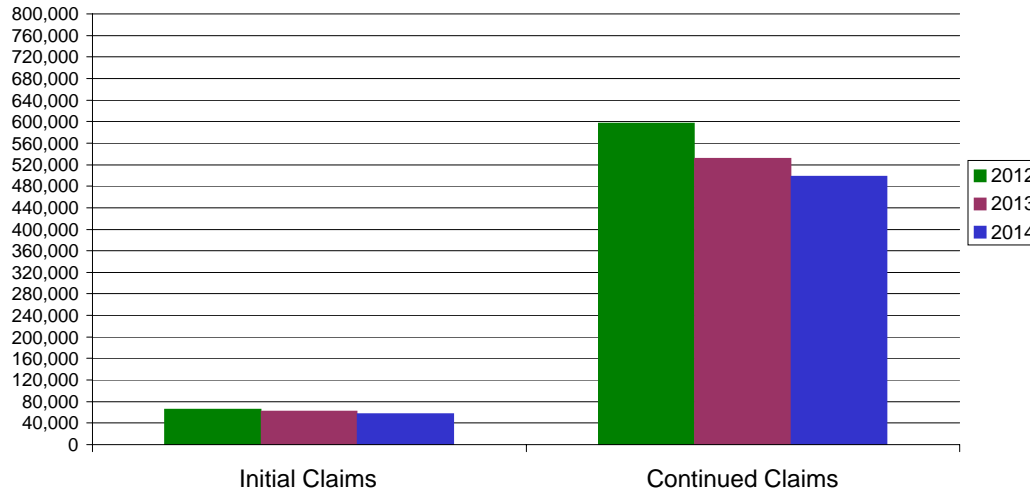
\* Includes UI, EUC08, Workshare & Interstate Liable.

Equal Opportunity Employer / Program / Auxiliary aids and services available upon request to individuals with disabilities / TTY via RI Relay 711.

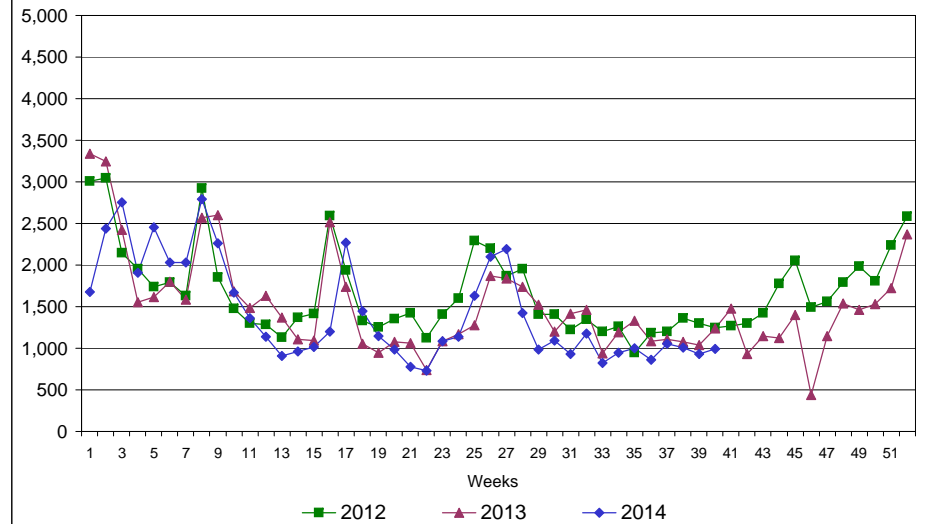
# Rhode Island Department of Labor and Training

## October 4, 2014

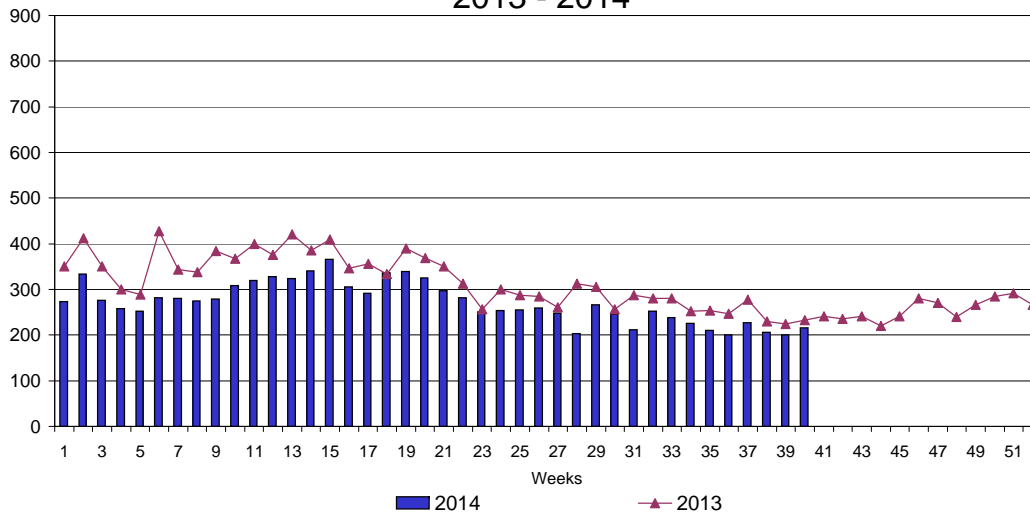
### UI Claims Comparison Year to Date



### UI Initial Claims 2012 - 2014



### UI Exhaustions 2013 - 2014



### TDI Claims Comparison Year to Date

