



Rhode Island Department of Labor and Training

Weekly Update of Claims Activity

Week Ending: October 11, 2014

Unemployment Insurance

Initial Claims – 1,004 initial claims were processed during the week ending 10/11/14, an increase of 10 from the previous week, and a decrease of 476 from a year ago. The number of initial claims filed to date is down 7.9 percent from last year and down 12.6 percent from two years ago.

Continued Claims – 7,991 continued claims were processed during the week of 10/11/14, an increase of 38 from the previous week and a decrease of 1,092 from a year ago. The number of continued claims filed to date is down 6.4 percent from last year and down 16.7 percent from two years ago.

Workshare – gives employers an alternative to layoffs by allowing employees to work reduced hours and collect a percentage of regular UI benefits to compensate for lost pay. This week, 31 initial claims and 338 continued claims were processed. An estimated 6 layoffs were prevented this week, as a result of Workshare.

Exhaustions – 210 individuals exhausted their regular payments this week, a decrease of 6 from the previous week and a decrease of 31 from a year ago.

Temporary Disability Insurance

Temporary Disability Insurance – 978 initial claims and 8,549 continued claims were processed for Temporary Disability Insurance. The average weekly TDI payment is \$441 per week. Rhode Island is currently paying an average of 10.7 weeks per new claim. To date there have been 35,920 TDI initial claims filed.

Temporary Caregiver Insurance – Of the 978 TDI initial claims, 137 (14.0%) were TCI Claims. This week 384 TCI payments were issued totaling \$186,920. The average weekly TCI payment was \$487. Of the 35,920 TDI claims filed to date, 3,851 or 10.7% were TCI claims.

	<u>Initial Claims</u>			<u>Continued Claims</u>	<u>TOTAL - Initial and Continued Claims</u>			
	<u>Total</u>	<u>New</u>	<u>Additional</u>		<u>Current Week</u>	<u>Previous Week</u>	<u>Year Ago</u>	<u>Two Years Ago</u>
Total - All programs*	1,065	704	361	8,792	9,857	9,681	11,615	12,357
UI Claims	1,004	660	344	7,991	8,995	8,947	10,563	11,334
Change from:								
Previous Week	10	39	-29	38	48			
Year Ago	-476	-438	-38	-1,092	-1,568			
Two Years Ago	-267	-146	-121	-2,072	-2,339			
Interstate-Liable	30	14	16	463	493	467	609	450
Workshare	31	30	1	338	369	267	443	573
Workshare Equivalency	6	6	0	83	89	72	107	161
UI Exhaustions	-	-	-	210	210	216	241	337
TDI Claims (Includes TCI)	978	748	230	8,549	9,527	8,284	7,106	6,837
Change from:								
Previous Week	95	69	26	1,148	1,243			
Year Ago	397	262	135	2,024	2,421			

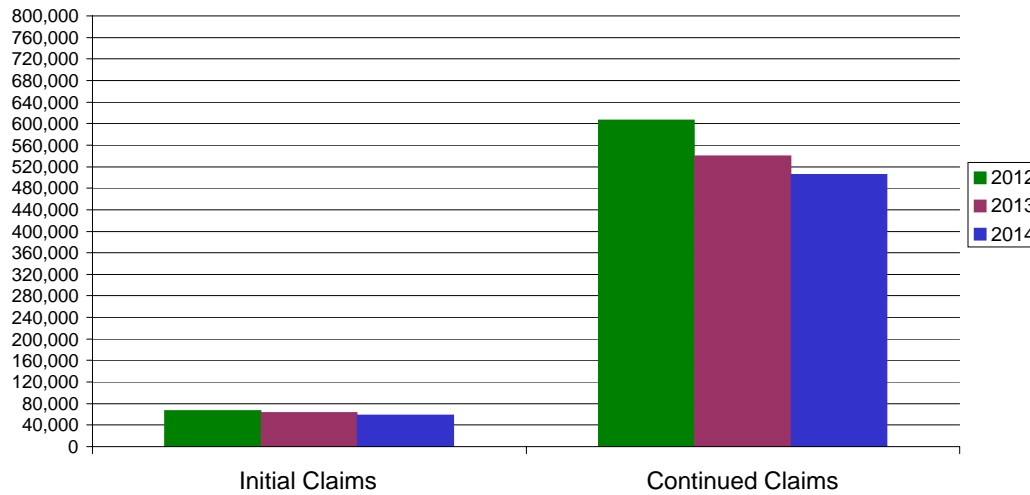
* Includes UI, EUC08, Workshare & Interstate Liable.

Equal Opportunity Employer / Program / Auxiliary aids and services available upon request to individuals with disabilities / TTY via RI Relay 711.

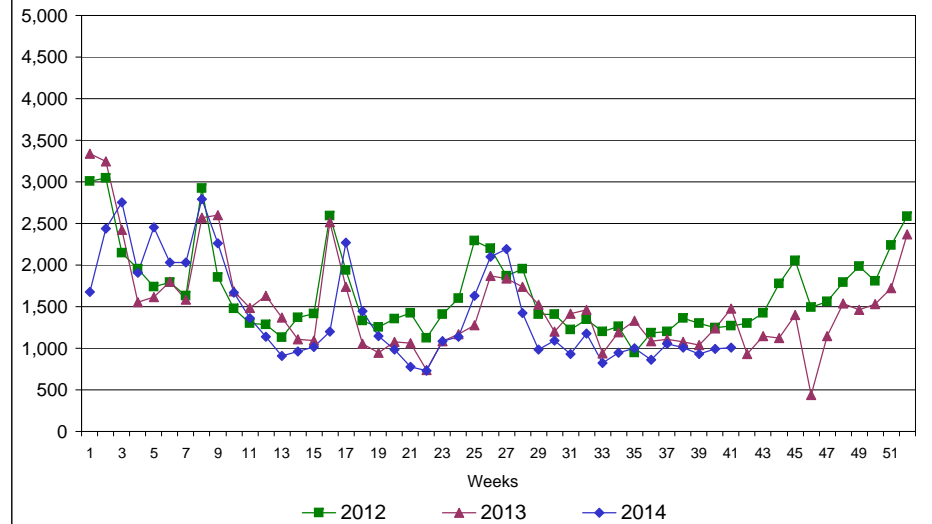
Rhode Island Department of Labor and Training

October 11, 2014

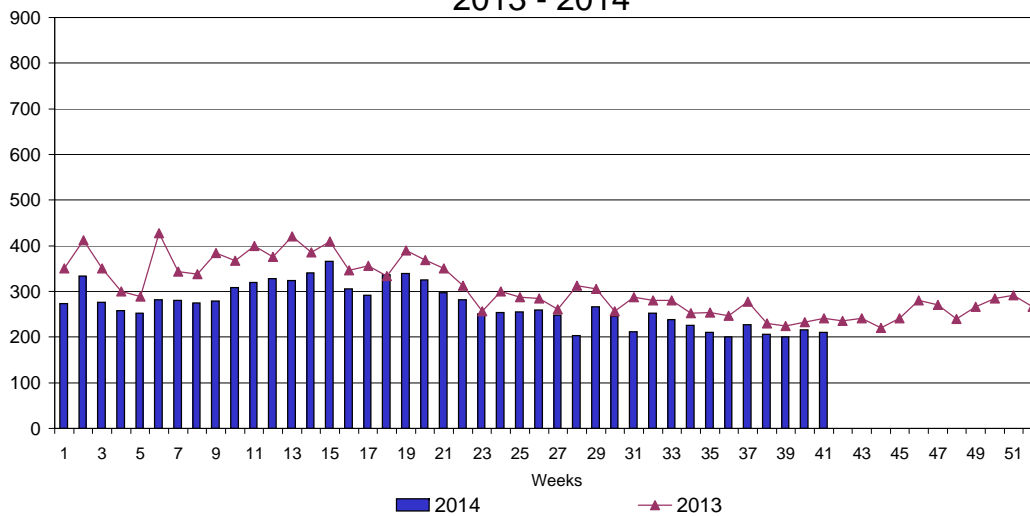
UI Claims Comparison Year to Date



UI Initial Claims 2012 - 2014



UI Exhaustions 2013 - 2014



TDI Claims Comparison Year to Date

