



Rhode Island Department of Labor and Training

Weekly Update of Claims Activity

Week Ending: October 18, 2014

Unemployment Insurance

Initial Claims – 935 initial claims were processed during the week ending 10/18/14, a decrease of 69 from the previous week, and an increase of 6 from a year ago. The number of initial claims filed to date is down 7.7 percent from last year and down 12.9 percent from two years ago.

Continued Claims – 7,766 continued claims were processed during the week of 10/18/14, a decrease of 225 from the previous week and a decrease of 1,272 from a year ago. The number of continued claims filed to date is down 6.5 percent from last year and down 16.8 percent from two years ago.

Workshare – gives employers an alternative to layoffs by allowing employees to work reduced hours and collect a percentage of regular UI benefits to compensate for lost pay. This week, 10 initial claims and 293 continued claims were processed. An estimated 2 layoffs were prevented this week, as a result of Workshare.

Exhaustions – 211 individuals exhausted their regular payments this week, an increase of 1 from the previous week and a decrease of 25 from a year ago.

Temporary Disability Insurance

Temporary Disability Insurance – 901 initial claims and 7,201 continued claims were processed for Temporary Disability Insurance. The average weekly TDI payment is \$453 per week. Rhode Island is currently paying an average of 10.6 weeks per new claim. To date there have been 36,821 TDI initial claims filed.

Temporary Caregiver Insurance – Of the 901 TDI initial claims, 84 (9.3%) were TCI Claims. This week 306 TCI payments were issued totaling \$152,976. The average weekly TCI payment was \$500. Of the 36,821 TDI claims filed to date, 3,935 or 10.7% were TCI claims.

	Initial Claims			Continued Claims	TOTAL - Initial and Continued Claims			
	Total	New	Additional		Current Week	Previous Week	Year Ago	Two Years Ago
Total - All programs*	984	642	342	8,495	9,479	9,857	10,887	13,170
UI Claims	935	607	328	7,766	8,701	8,995	9,967	11,936
Change from:								
Previous Week	-69	-53	-16	-225	-294			
Year Ago	6	20	-14	-1,272	-1,266			
Two Years Ago	-363	-220	-143	-2,872	-3,235			
Interstate-Liable	39	26	13	436	475	493	565	441
Workshare	10	9	1	293	303	369	355	793
Workshare Equivalency	2	2	0	77	79	89	88	251
UI Exhaustions	-	-	-	211	211	210	236	282
TDI Claims (Includes TCI)	901	689	212	7,201	8,102	9,527	7,456	7,544
Change from:								
Previous Week	-77	-59	-18	-1,348	-1,425			
Year Ago	286	169	117	360	646			

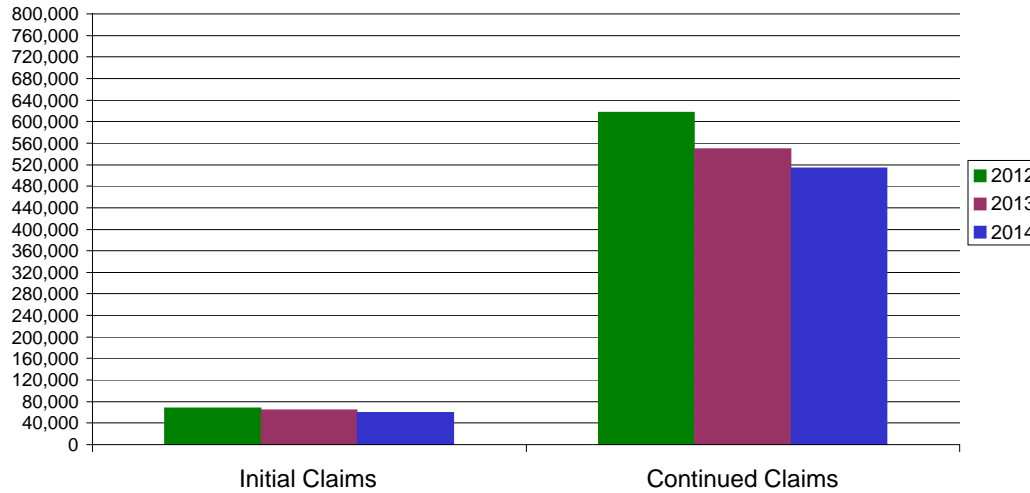
* Includes UI, EUC08, Workshare & Interstate Liable.

Equal Opportunity Employer / Program / Auxiliary aids and services available upon request to individuals with disabilities / TTY via RI Relay 711.

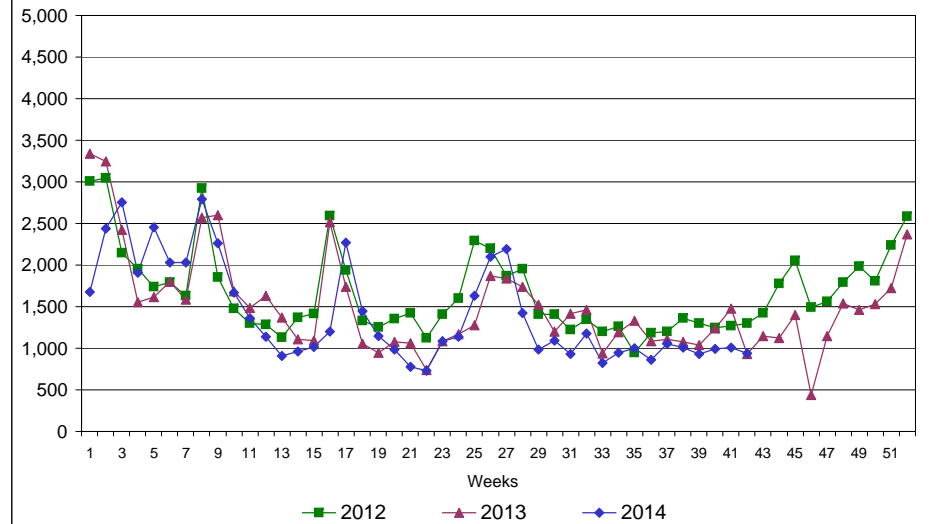
Rhode Island Department of Labor and Training

October 18, 2014

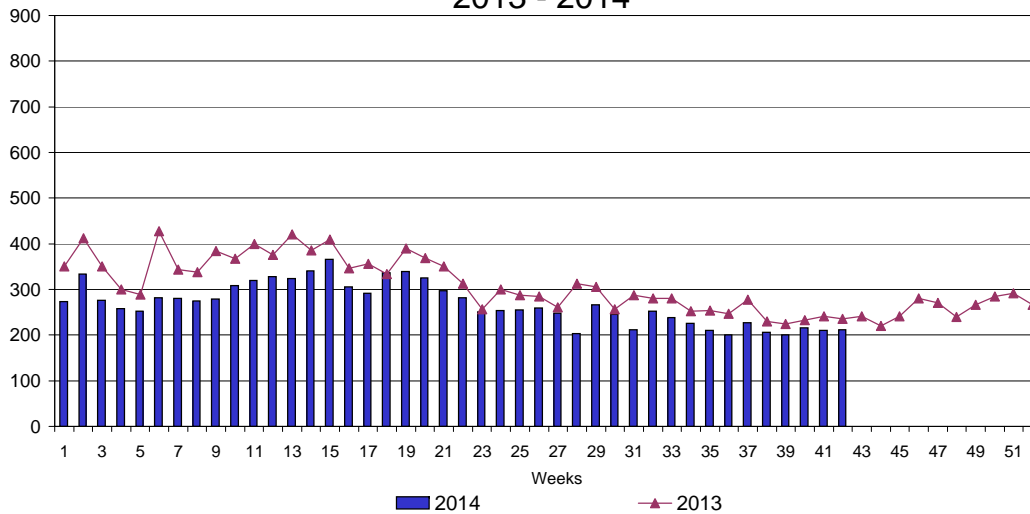
UI Claims Comparison Year to Date



UI Initial Claims 2012 - 2014



UI Exhaustions 2013 - 2014



TDI Claims Comparison Year to Date

