



Rhode Island Department of Labor and Training

Weekly Update of Claims Activity

Week Ending: October 25, 2014

Unemployment Insurance

Initial Claims – 1,017 initial claims were processed during the week ending 10/25/14, an increase of 82 from the previous week, and a decrease of 129 from a year ago. The number of initial claims filed to date is down 7.8 percent from last year and down 13.2 percent from two years ago.

Continued Claims – 7,849 continued claims were processed during the week of 10/25/14, an increase of 83 from the previous week and a decrease of 1,304 from a year ago. The number of continued claims filed to date is down 6.7 percent from last year and down 17.0 percent from two years ago.

Workshare – gives employers an alternative to layoffs by allowing employees to work reduced hours and collect a percentage of regular UI benefits to compensate for lost pay. This week, 9 initial claims and 219 continued claims were processed. An estimated 2 layoffs were prevented this week, as a result of Workshare.

Exhaustions – 204 individuals exhausted their regular payments this week, a decrease of 7 from the previous week and a decrease of 37 from a year ago.

Temporary Disability Insurance

Temporary Disability Insurance – 908 initial claims and 7,893 continued claims were processed for Temporary Disability Insurance. The average weekly TDI payment is \$442 per week. Rhode Island is currently paying an average of 10.6 weeks per new claim. To date there have been 37,729 TDI initial claims filed.

Temporary Caregiver Insurance – Of the 908 TDI initial claims, 130 (14.3%) were TCI Claims. This week 342 TCI payments were issued totaling \$163,982. The average weekly TCI payment was \$479. Of the 37,729 TDI claims filed to date, 4,065 or 10.8% were TCI claims.

	<u>Initial Claims</u>			<u>Continued Claims</u>	<u>TOTAL - Initial and Continued Claims</u>			
	<u>Total</u>	<u>New</u>	<u>Additional</u>		<u>Current Week</u>	<u>Previous Week</u>	<u>Year Ago</u>	<u>Two Years Ago</u>
Total - All programs*	1,068	680	388	8,528	9,596	9,479	11,477	12,784
UI Claims	1,017	649	368	7,849	8,866	8,701	10,299	12,027
Change from:								
Previous Week	82	42	40	83	165			
Year Ago	-129	-45	-84	-1,304	-1,433			
Two Years Ago	-405	-264	-141	-2,756	-3,161			
Interstate-Liable	42	24	18	460	502	475	653	71
Workshare	9	7	2	219	228	303	525	686
Workshare Equivalency	2	2	0	53	55	79	124	159
UI Exhaustions	-	-	-	204	204	211	241	294
TDI Claims (Includes TCI)	908	704	204	7,893	8,801	8,102	8,055	8,646
Change from:								
Previous Week	7	15	-8	692	699			
Year Ago	66	-11	77	680	746			

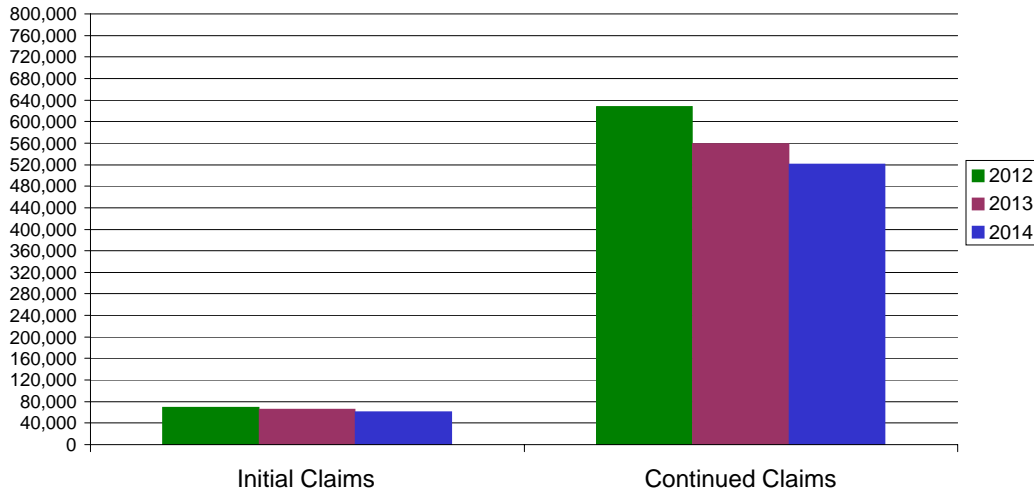
* Includes UI, EUC08, Workshare & Interstate Liable.

Equal Opportunity Employer / Program / Auxiliary aids and services available upon request to individuals with disabilities / TTY via RI Relay 711.

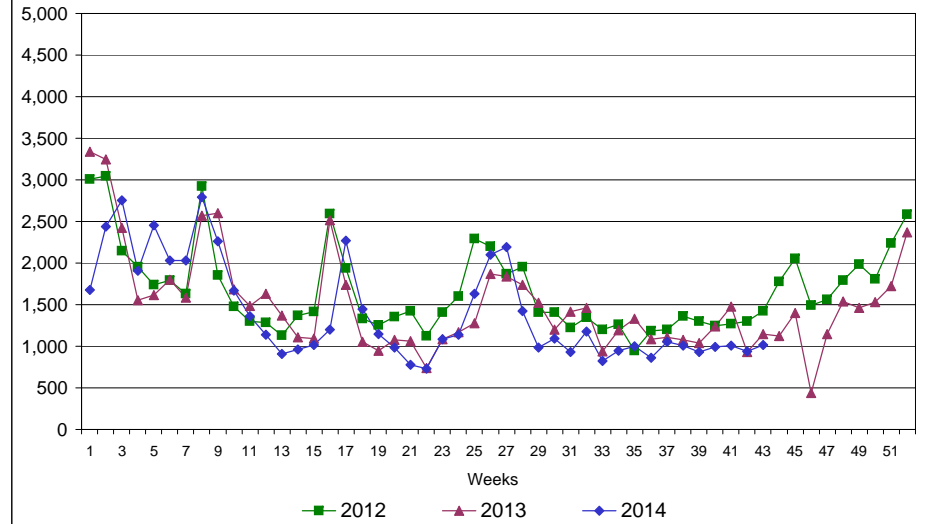
Rhode Island Department of Labor and Training

October 25, 2014

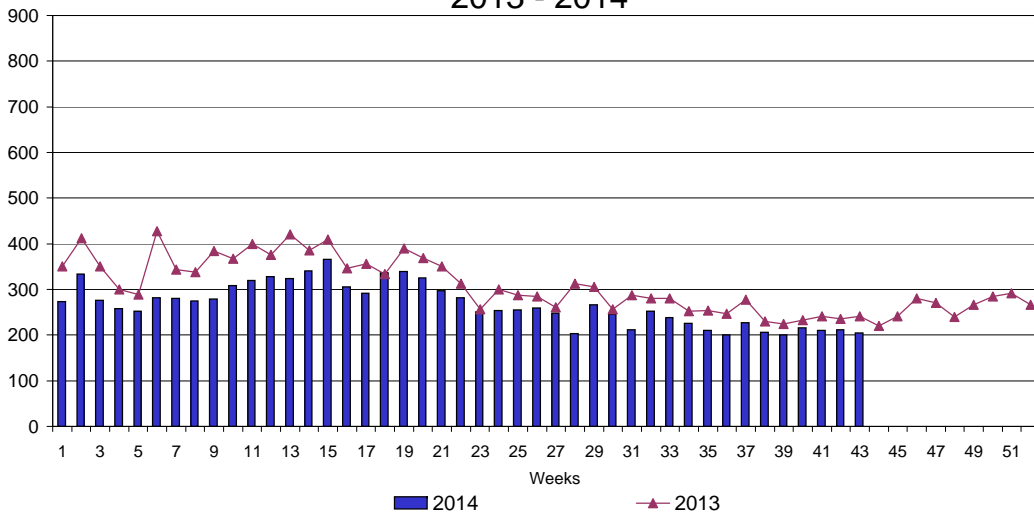
UI Claims Comparison Year to Date



UI Initial Claims 2012 - 2014



UI Exhaustions 2013 - 2014



TDI Claims Comparison Year to Date

