



Rhode Island Department of Labor and Training

Weekly Update of Claims Activity

Week Ending: November 1, 2014

Unemployment Insurance

Initial Claims – 1,006 initial claims were processed during the week ending 11/1/14, a decrease of 11 from the previous week, and a decrease of 115 from a year ago. The number of initial claims filed to date is down 7.8 percent from last year and down 14.0 percent from two years ago.

Continued Claims – 7,845 continued claims were processed during the week of 11/1/14, a decrease of 4 from the previous week and a decrease of 1,383 from a year ago. The number of continued claims filed to date is down 6.8 percent from last year and down 17.1 percent from two years ago.

Workshare – gives employers an alternative to layoffs by allowing employees to work reduced hours and collect a percentage of regular UI benefits to compensate for lost pay. This week, 16 initial claims and 283 continued claims were processed. An estimated 3 layoffs were prevented this week, as a result of Workshare.

Exhaustions – 186 individuals exhausted their regular payments this week, a decrease of 18 from the previous week and a decrease of 34 from a year ago.

Temporary Disability Insurance

Temporary Disability Insurance – 1,069 initial claims and 8,397 continued claims were processed for Temporary Disability Insurance. The average weekly TDI payment is \$447 per week. Rhode Island is currently paying an average of 10.6 weeks per new claim. To date there have been 38,798 TDI initial claims filed.

Temporary Caregiver Insurance – Of the 1,069 TDI initial claims, 160 (15.0%) were TCI Claims. This week 426 TCI payments were issued totaling \$211,058. The average weekly TCI payment was \$495. Of the 38,798 TDI claims filed to date, 4,225 or 10.9% were TCI claims.

	Initial Claims			Continued Claims	TOTAL - Initial and Continued Claims			
	Total	New	Additional		Current Week	Previous Week	Year Ago	Two Years Ago
Total - All programs*	1,058	719	339	8,607	9,665	9,596	12,126	13,016
UI Claims	1,006	679	327	7,845	8,851	8,866	10,349	12,021
Change from:								
Previous Week	-11	30	-41	-4	-15			
Year Ago	-115	-18	-97	-1,383	-1,498			
Two Years Ago	-769	-288	-481	-2,401	-3,170			
Interstate-Liable	36	25	11	479	515	502	620	455
Workshare	16	15	1	283	299	228	1,157	540
Workshare Equivalency	3	3	0	71	74	55	275	137
UI Exhaustions	-	-	-	186	186	204	220	319
TDI Claims (Includes TCI)	1,069	826	243	8,397	9,466	8,801	6,269	5,994
Change from:								
Previous Week	161	122	39	504	665			
Year Ago	225	132	93	2,972	3,197			

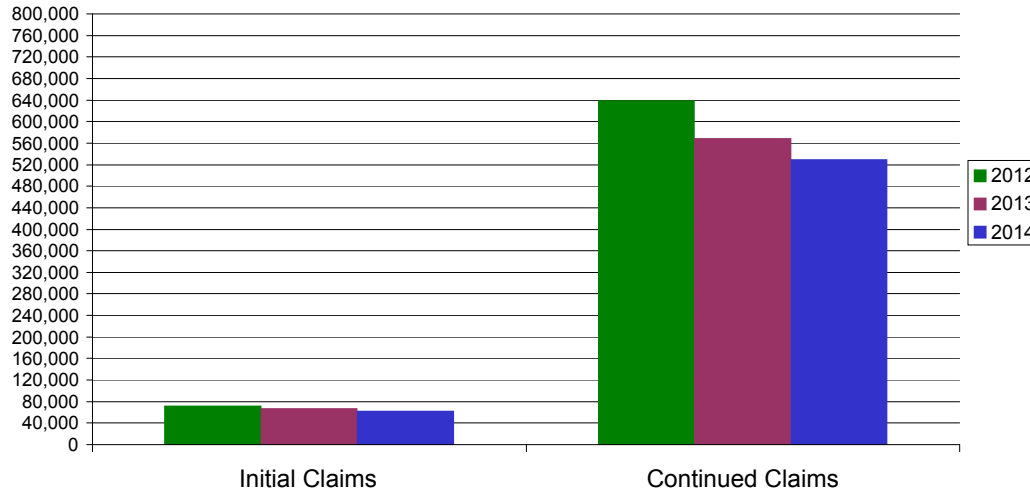
* Includes UI, EUC08, Workshare & Interstate Liable.

Equal Opportunity Employer / Program / Auxiliary aids and services available upon request to individuals with disabilities / TTY via RI Relay 711.

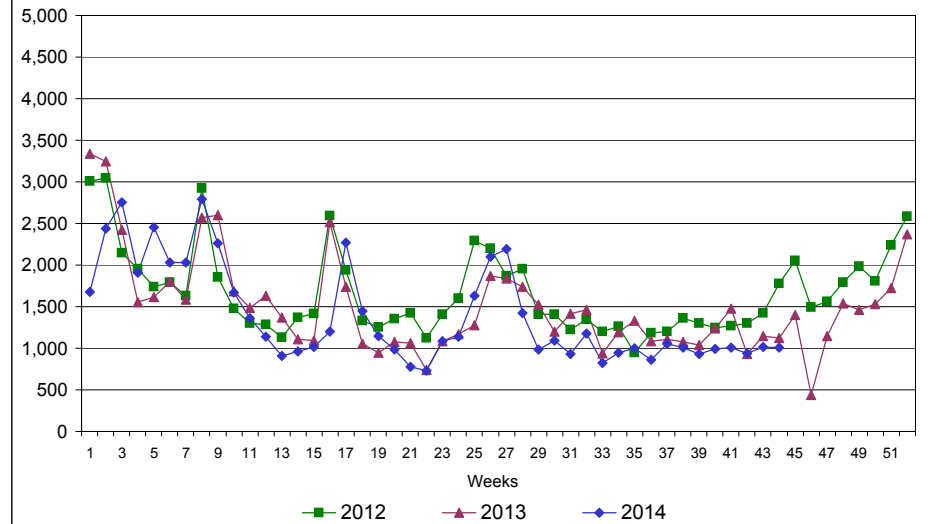
Rhode Island Department of Labor and Training

November 1, 2014

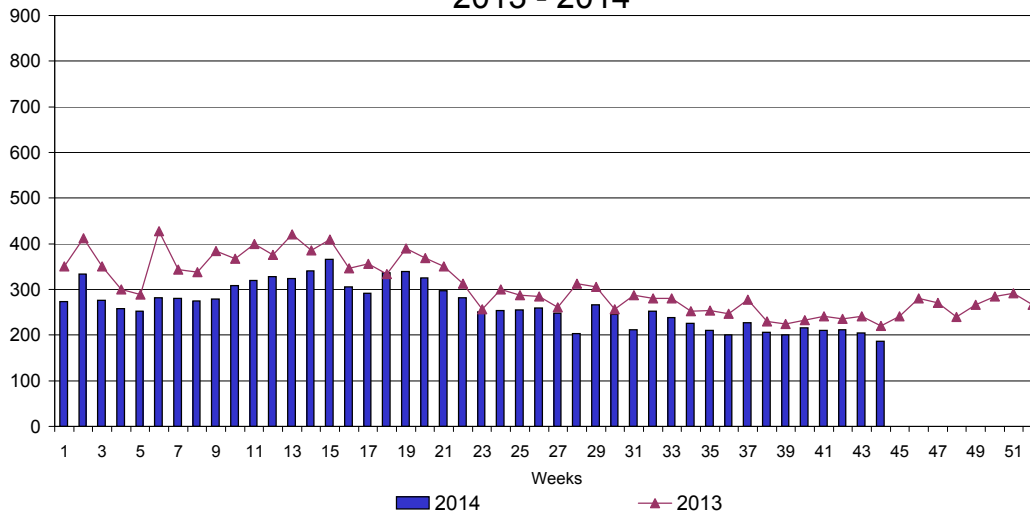
UI Claims Comparison Year to Date



UI Initial Claims 2012 - 2014



UI Exhaustions 2013 - 2014



TDI Claims Comparison Year to Date

