



Rhode Island Department of Labor and Training

Weekly Update of Claims Activity

Week Ending: November 8, 2014

Unemployment Insurance

Initial Claims – 895 initial claims were processed during the week ending 11/8/14, a decrease of 111 from the previous week, and a decrease of 502 from a year ago. The number of initial claims filed to date is down 8.4 percent from last year and down 15.2 percent from two years ago.

Continued Claims – 7,763 continued claims were processed during the week of 11/8/14, a decrease of 82 from the previous week and a decrease of 1,746 from a year ago. The number of continued claims filed to date is down 7.0 percent from last year and down 17.3 percent from two years ago.

Workshare – gives employers an alternative to layoffs by allowing employees to work reduced hours and collect a percentage of regular UI benefits to compensate for lost pay. This week, 25 initial claims and 192 continued claims were processed. An estimated 5 layoffs were prevented this week, as a result of Workshare.

Exhaustions – 206 individuals exhausted their regular payments this week, an increase of 20 from the previous week and a decrease of 35 from a year ago.

Temporary Disability Insurance

Temporary Disability Insurance – 641 initial claims and 7,174 continued claims were processed for Temporary Disability Insurance. The average weekly TDI payment is \$453 per week. Rhode Island is currently paying an average of 10.7 weeks per new claim. To date there have been 39,439 TDI initial claims filed.

Temporary Caregiver Insurance – Of the 641 TDI initial claims, 94 (14.7%) were TCI Claims. This week 332 TCI payments were issued totaling \$165,816. The average weekly TCI payment was \$499. Of the 39,439 TDI claims filed to date, 4,319 or 11.0% were TCI claims.

	Initial Claims			Continued Claims	TOTAL - Initial and Continued Claims			
	Total	New	Additional		Current Week	Previous Week	Year Ago	Two Years Ago
Total - All programs*	948	595	353	8,430	9,378	9,665	11,997	13,851
UI Claims	895	554	341	7,763	8,658	8,851	10,906	12,832
Change from:								
Previous Week	-111	-125	14	-82	-193			
Year Ago	-502	-313	-189	-1,746	-2,248			
Two Years Ago	-1,160	-680	-480	-3,014	-4,174			
Interstate-Liable	28	16	12	475	503	515	669	507
Workshare	25	25	0	192	217	299	422	512
Workshare Equivalency	5	5	0	48	53	74	103	160
UI Exhaustions	-	-	-	206	206	186	241	353
TDI Claims (Includes TCI)	641	478	163	7,174	7,815	9,466	6,287	9,305
Change from:								
Previous Week	-428	-348	-80	-1,223	-1,651			
Year Ago	-148	-192	44	1,676	1,528			

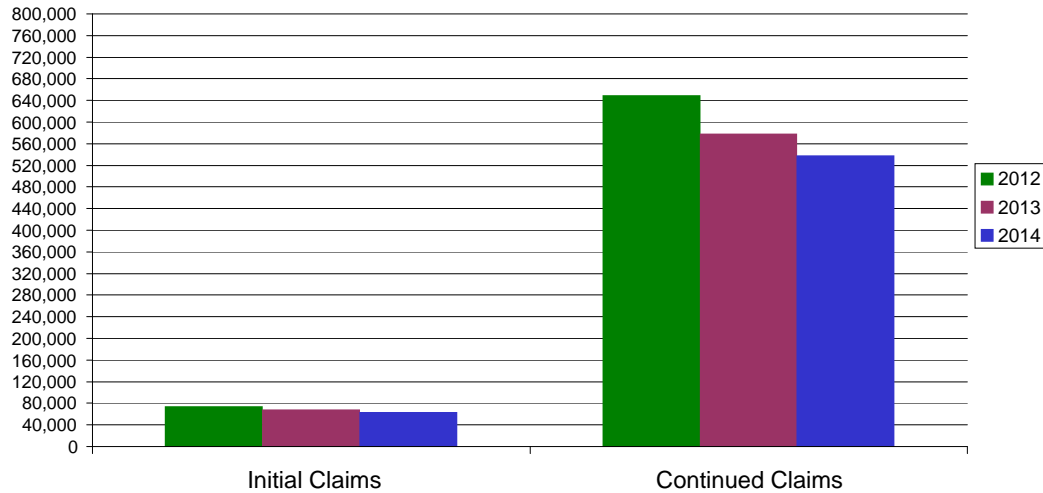
* Includes UI, EUC08, Workshare & Interstate Liable.

Equal Opportunity Employer / Program / Auxiliary aids and services available upon request to individuals with disabilities / TTY via RI Relay 711.

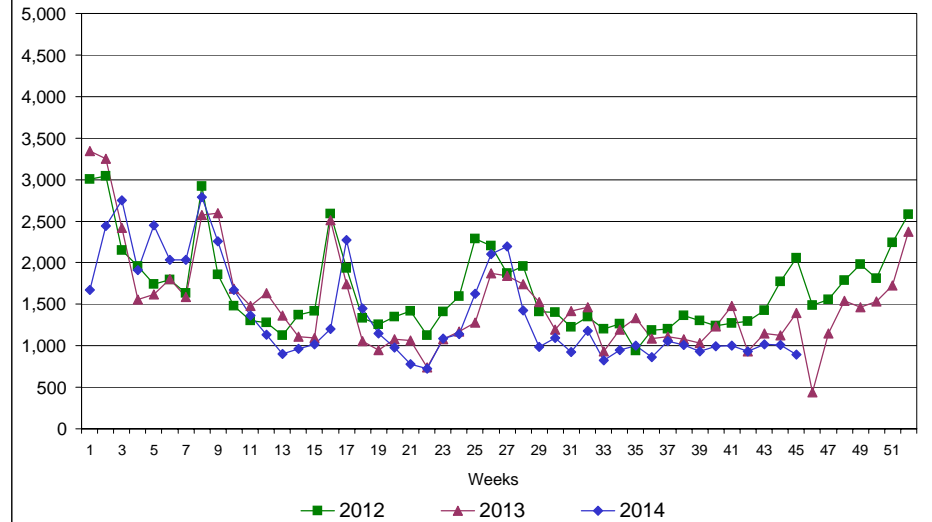
Rhode Island Department of Labor and Training

November 8, 2014

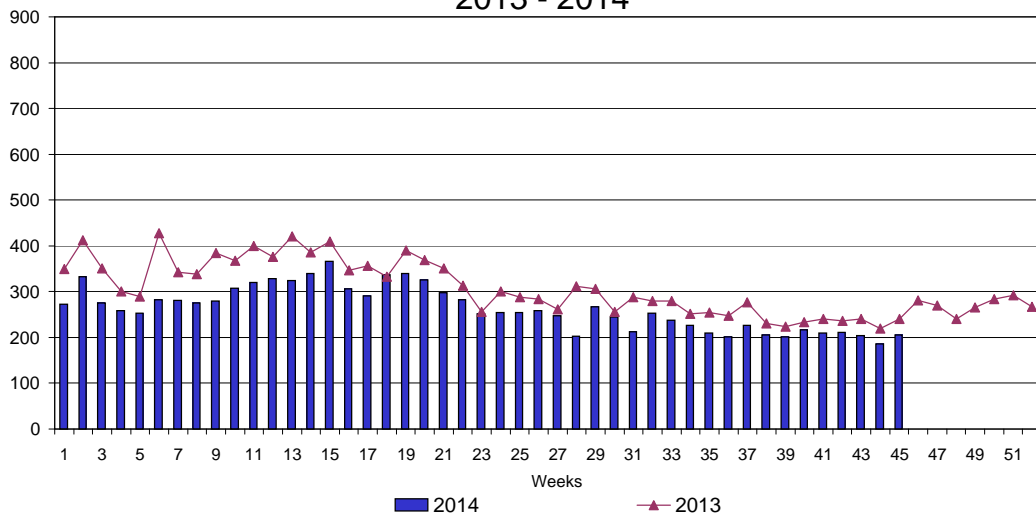
UI Claims Comparison Year to Date



UI Initial Claims 2012 - 2014



UI Exhaustions 2013 - 2014



TDI Claims Comparison Year to Date

