



Rhode Island Department of Labor and Training

Weekly Update of Claims Activity

Week Ending: November 15, 2014

Unemployment Insurance

Initial Claims – 1,064 initial claims were processed during the week ending 11/15/14, an increase of 169 from the previous week, and an increase of 625 from a year ago. The number of initial claims filed to date is down 7.4 percent from last year and down 15.4 percent from two years ago.

Continued Claims – 7,927 continued claims were processed during the week of 11/15/14, an increase of 164 from the previous week and a decrease of 99 from a year ago. The number of continued claims filed to date is down 6.9 percent from last year and down 17.5 percent from two years ago.

Workshare – gives employers an alternative to layoffs by allowing employees to work reduced hours and collect a percentage of regular UI benefits to compensate for lost pay. This week, 21 initial claims and 236 continued claims were processed. An estimated 5 layoffs were prevented this week, as a result of Workshare.

Exhaustions – 212 individuals exhausted their regular payments this week, an increase of 6 from the previous week and a decrease of 69 from a year ago.

Temporary Disability Insurance

Temporary Disability Insurance – 629 initial claims and 6,997 continued claims were processed for Temporary Disability Insurance. The average weekly TDI payment is \$450 per week. Rhode Island is currently paying an average of 10.7 weeks per new claim. To date there have been 40,068 TDI initial claims filed.

Temporary Caregiver Insurance – Of the 629 TDI initial claims, 83 (13.2%) were TCI Claims. This week 242 TCI payments were issued totaling \$117,082. The average weekly TCI payment was \$484. Of the 40,068 TDI claims filed to date, 4,402 or 10.9% were TCI claims.

	Initial Claims			Continued Claims	TOTAL - Initial and Continued Claims			
	Total	New	Additional		Current Week	Previous Week	Year Ago	Two Years Ago
Total - All programs*	1,115	724	391	8,637	9,752	9,378	8,977	13,768
UI Claims	1,064	684	380	7,927	8,991	8,658	8,465	12,626
Change from:								
Previous Week	169	130	39	164	333			
Year Ago	625	423	202	-99	526			
Two Years Ago	-426	-262	-164	-3,209	-3,635			
Interstate-Liable	30	22	8	474	504	503	510	498
Workshare	21	18	3	236	257	217	2	644
Workshare Equivalency	5	4	1	59	64	53	1	162
UI Exhaustions	-	-	-	212	212	206	281	358
TDI Claims (Includes TCI)	629	492	137	6,997	7,626	7,815	6,907	6,652
Change from:								
Previous Week	-12	14	-26	-177	-189			
Year Ago	132	85	47	587	719			

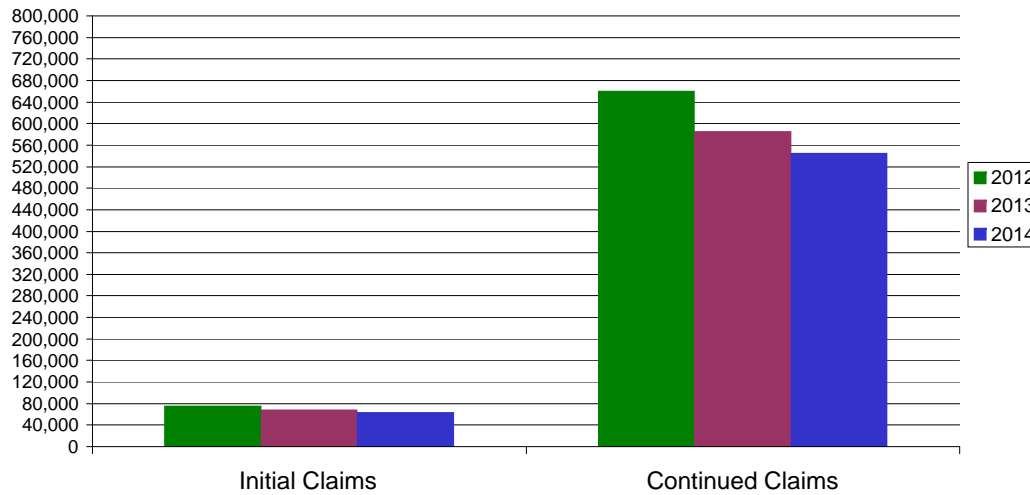
* Includes UI, EUC08, Workshare & Interstate Liable.

Equal Opportunity Employer / Program / Auxiliary aids and services available upon request to individuals with disabilities / TTY via RI Relay 711.

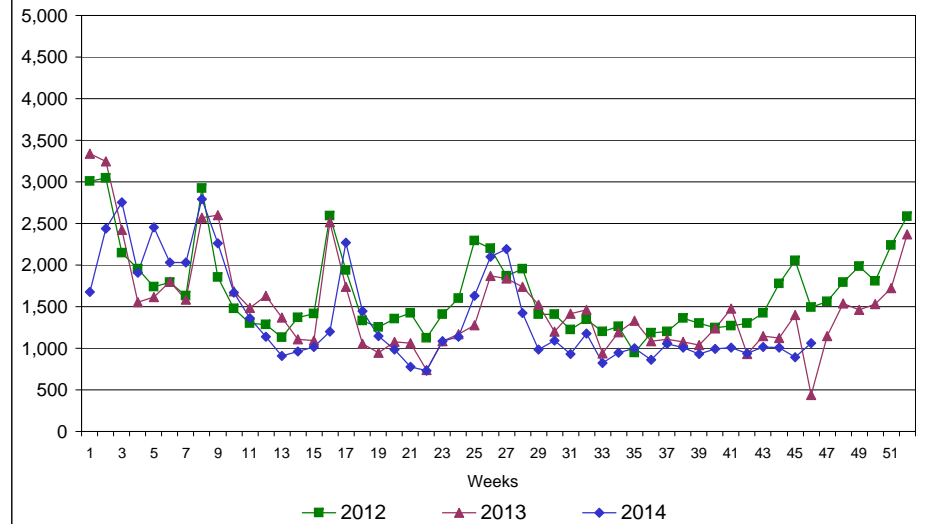
Rhode Island Department of Labor and Training

November 15, 2014

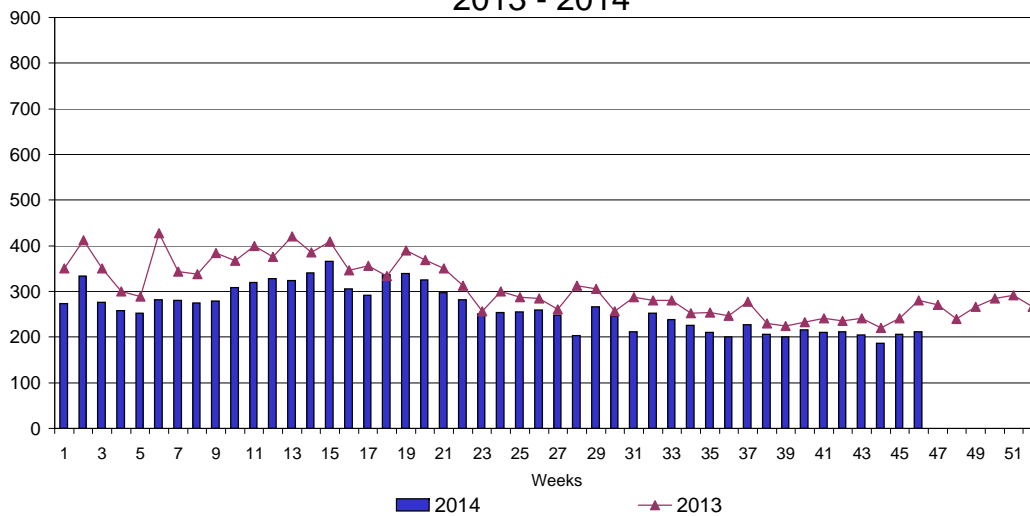
UI Claims Comparison Year to Date



UI Initial Claims 2012 - 2014



UI Exhaustions 2013 - 2014



TDI Claims Comparison Year to Date

