



Rhode Island Department of Labor and Training

Weekly Update of Claims Activity

Week Ending: November 22, 2014

Unemployment Insurance

Initial Claims – 1,649 initial claims were processed during the week ending 11/22/14, an increase of 585 from the previous week. The number of initial claims filed to date is down 6.6 percent from last year and down 15.0 percent from two years ago.

Continued Claims – 8,478 continued claims were processed during the week of 11/22/14, an increase of 551 from the previous week. The number of continued claims filed to date is down 6.9 percent from last year and down 17.6 percent from two years ago.

Workshare – gives employers an alternative to layoffs by allowing employees to work reduced hours and collect a percentage of regular UI benefits to compensate for lost pay. This week, 5 initial claims and 316 continued claims were processed. An estimated 1 layoff was prevented this week, as a result of Workshare.

Exhaustions – 208 individuals exhausted their regular payments this week, a decrease of 4 from the previous week.

Temporary Disability Insurance

Temporary Disability Insurance – 1,330 initial claims and 8,106 continued claims were processed for Temporary Disability Insurance. The average weekly TDI payment is \$451 per week. Rhode Island is currently paying an average of 10.6 weeks per new claim. To date there have been 41,398 TDI initial claims filed.

Temporary Caregiver Insurance – Of the 1,330 TDI initial claims, 131 (9.8%) were TCI Claims. This week 308 TCI payments were issued totaling \$158,819. The average weekly TCI payment was \$516. Of the 41,398 TDI claims filed to date, 4,533 or 10.9% were TCI claims.

| | Initial Claims | | | Continued Claims | TOTAL - Initial and Continued Claims | | | |
|----------------------------------|----------------|-------|------------|------------------|--------------------------------------|---------------|----------|---------------|
| | Total | New | Additional | | Current Week | Previous Week | Year Ago | Two Years Ago |
| Total - All programs* | 1,703 | 1,084 | 619 | 9,293 | 10,996 | 9,752 | N/A | 13,891 |
| UI Claims | 1,649 | 1,049 | 600 | 8,478 | 10,127 | 8,991 | N/A | 12,942 |
| Change from: | | | | | | | | |
| Previous Week | 585 | 365 | 220 | 551 | 1,136 | | | |
| Year Ago | N/A | N/A | N/A | N/A | N/A | | | |
| Two Years Ago | 90 | 222 | -132 | -2,905 | -2,815 | | | |
| Interstate-Liable | 49 | 31 | 18 | 499 | 548 | 504 | N/A | 550 |
| Workshare | 5 | 4 | 1 | 316 | 321 | 257 | N/A | 399 |
| Workshare Equivalency | 1 | 1 | 0 | 77 | 78 | 64 | N/A | 102 |
| UI Exhaustions | - | - | - | 208 | 208 | 212 | N/A | 326 |
| TDI Claims (Includes TCI) | 1,330 | 1,040 | 290 | 8,106 | 9,436 | 7,626 | 10,652 | 7,593 |
| Change from: | | | | | | | | |
| Previous Week | 701 | 548 | 153 | 1,109 | 1,810 | | | |
| Year Ago | 327 | 228 | 99 | -1,543 | -1,216 | | | |

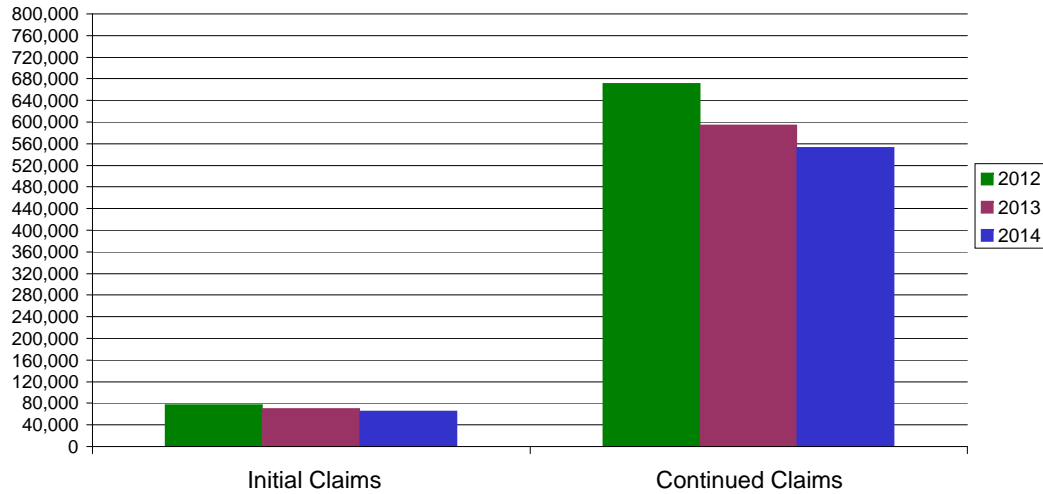
* Includes UI, EUC08, Workshare & Interstate Liable.

Equal Opportunity Employer / Program / Auxiliary aids and services available upon request to individuals with disabilities / TTY via RI Relay 711.

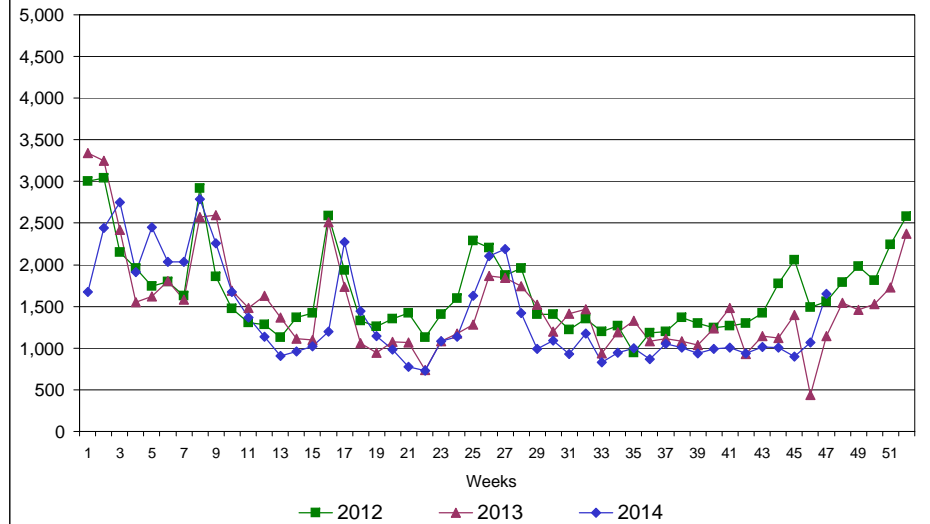
Rhode Island Department of Labor and Training

November 22, 2014

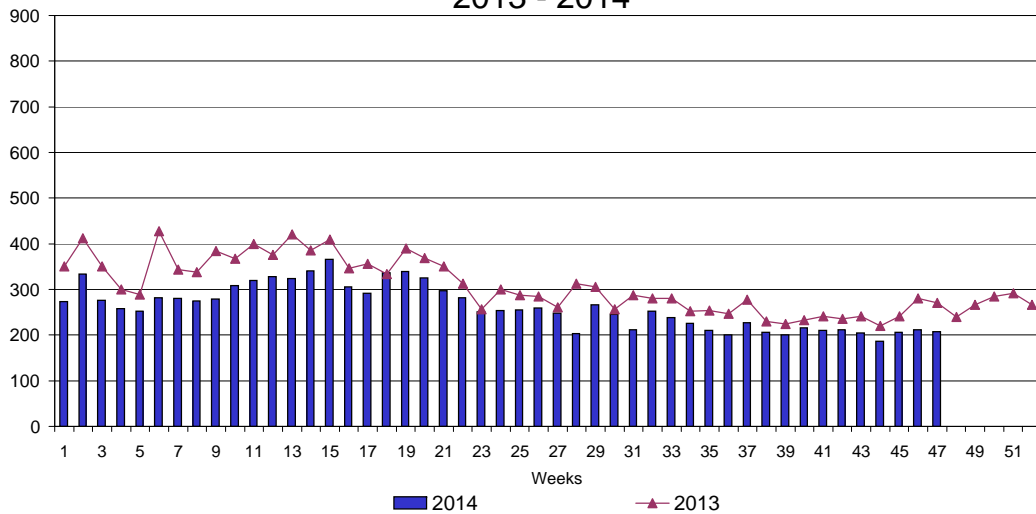
UI Claims Comparison Year to Date



UI Initial Claims 2012 - 2014



UI Exhaustions 2013 - 2014



TDI Claims Comparison Year to Date

