



## Rhode Island Department of Labor and Training

# *Weekly Update of Claims Activity*

*Week Ending: November 29, 2014*

### *Unemployment Insurance*

**Initial Claims** – 1,387 initial claims were processed during the week ending 11/29/14, a decrease of 262 from the previous week, and a decrease of 155 from a year ago. The number of initial claims filed to date is down 6.7 percent from last year and down 15.2 percent from two years ago.

**Continued Claims** – 8,618 continued claims were processed during the week of 11/29/14, an increase of 140 from the previous week and a decrease of 1,851 from a year ago. The number of continued claims filed to date is down 7.1 percent from last year and down 17.9 percent from two years ago.

**Workshare** – gives employers an alternative to layoffs by allowing employees to work reduced hours and collect a percentage of regular UI benefits to compensate for lost pay. This week, 17 initial claims and 158 continued claims were processed. An estimated 4 layoffs were prevented this week, as a result of Workshare.

**Exhaustions** – 198 individuals exhausted their regular payments this week, a decrease of 10 from the previous week and a decrease of 42 from a year ago.

### *Temporary Disability Insurance*

**Temporary Disability Insurance** – 440 initial claims and 7,064 continued claims were processed for Temporary Disability Insurance. The average weekly TDI payment is \$454 per week. Rhode Island is currently paying an average of 10.7 weeks per new claim. To date there have been 41,838 TDI initial claims filed.

**Temporary Caregiver Insurance** – Of the 440 TDI initial claims, 90 (20.5%) were TCI Claims. This week 283 TCI payments were issued totaling \$141,335. The average weekly TCI payment was \$499. Of the 41,838 TDI claims filed to date, 4,623 or 11.0% were TCI claims.

	Initial Claims			Continued Claims	TOTAL - Initial and Continued Claims			
	Total	New	Additional		Current Week	Previous Week	Year Ago	Two Years Ago
<b>Total - All programs*</b>	1,436	764	672	9,283	10,719	10,996	13,287	15,329
<b>UI Claims</b>	1,387	736	651	8,618	10,005	10,127	12,011	14,233
Change from:								
Previous Week	-262	-313	51	140	-122			
Year Ago	-155	-103	-52	-1,851	-2,006			
Two Years Ago	-403	-347	-56	-3,825	-4,228			
<b>Interstate-Liable</b>	32	12	20	507	539	548	659	569
<b>Workshare</b>	17	16	1	158	175	321	617	527
<b>Workshare Equivalency</b>	4	4	0	37	41	78	154	136
<b>UI Exhaustions</b>	-	-	-	198	198	208	240	363
<b>TDI Claims (Includes TCI)</b>	440	346	94	7,064	7,504	9,436	7,562	7,702
Change from:								
Previous Week	-890	-694	-196	-1,042	-1,932			
Year Ago	-261	-226	-35	203	-58			

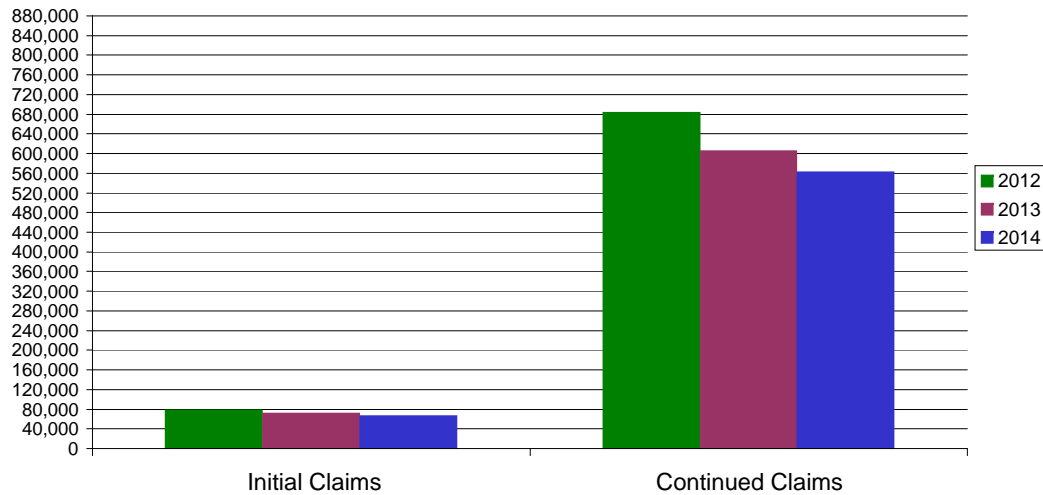
\* Includes UI, EUC08, Workshare & Interstate Liable.

Equal Opportunity Employer / Program / Auxiliary aids and services available upon request to individuals with disabilities / TTY via RI Relay 711.

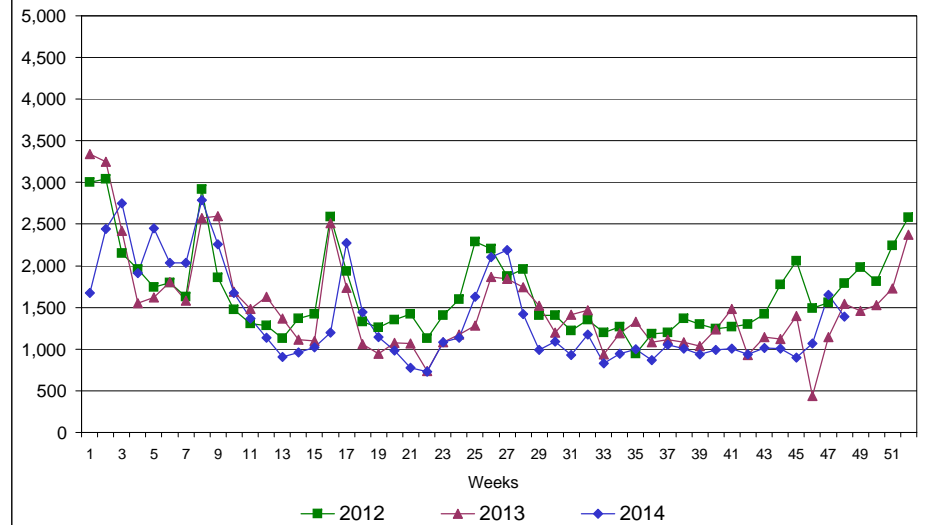
# Rhode Island Department of Labor and Training

## November 29, 2014

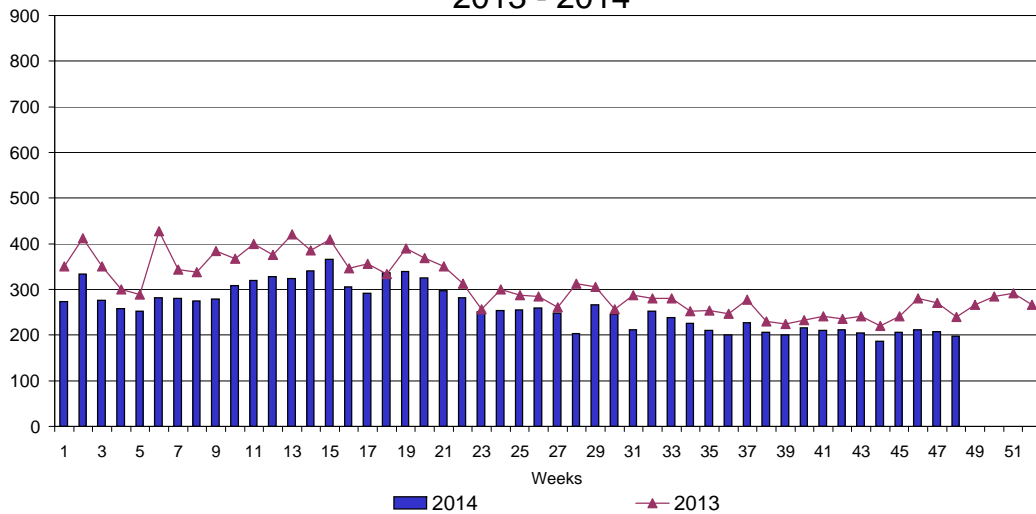
### UI Claims Comparison Year to Date



### UI Initial Claims 2012 - 2014



### UI Exhaustions 2013 - 2014



### TDI Claims Comparison Year to Date

