



Rhode Island Department of Labor and Training

Weekly Update of Claims Activity

Week Ending: December 6, 2014

Unemployment Insurance

Initial Claims – 1,582 initial claims were processed during the week ending 12/6/14, an increase of 195 from the previous week, and an increase of 122 from a year ago. The number of initial claims filed to date is down 6.4 percent from last year and down 15.3 percent from two years ago.

Continued Claims – 9,478 continued claims were processed during the week of 12/6/14, an increase of 860 from the previous week and a decrease of 1,936 from a year ago. The number of continued claims filed to date is down 7.3 percent from last year and down 18.0 percent from two years ago.

Workshare – gives employers an alternative to layoffs by allowing employees to work reduced hours and collect a percentage of regular UI benefits to compensate for lost pay. This week, 1 initial claim and 268 continued claims were processed.

Exhaustions – 194 individuals exhausted their regular payments this week, a decrease of 4 from the previous week and a decrease of 72 from a year ago.

Temporary Disability Insurance

Temporary Disability Insurance – 800 initial claims and 7,059 continued claims were processed for Temporary Disability Insurance. The average weekly TDI payment is \$459 per week. Rhode Island is currently paying an average of 10.7 weeks per new claim. To date there have been 42,638 TDI initial claims filed.

Temporary Caregiver Insurance – Of the 800 TDI initial claims, 99 (12.4%) were TCI Claims. This week 318 TCI payments were issued totaling \$150,506. The average weekly TCI payment was \$473. Of the 42,638 TDI claims filed to date, 4,722 or 11.1% were TCI claims.

	Initial Claims			Continued Claims	TOTAL - Initial and Continued Claims			
	Total	New	Additional		Current Week	Previous Week	Year Ago	Two Years Ago
Total - All programs*	1,628	932	696	10,275	11,903	10,719	13,847	15,427
UI Claims	1,582	905	677	9,478	11,060	10,005	12,875	14,405
Change from:								
Previous Week	195	169	26	860	1,055			
Year Ago	122	109	13	-1,936	-1,814			
Two Years Ago	-401	-743	342	-2,944	-3,345			
Interstate-Liable	45	27	18	529	574	539	657	585
Workshare	1	0	1	268	269	175	315	437
Workshare Equivalency	0	0	0	64	64	41	81	175
UI Exhaustions	-	-	-	194	194	198	266	338
TDI Claims (Includes TCI)	800	633	167	7,059	7,859	7,504	6,608	7,548
Change from:								
Previous Week	360	287	73	-5	355			
Year Ago	276	191	85	975	1,251			

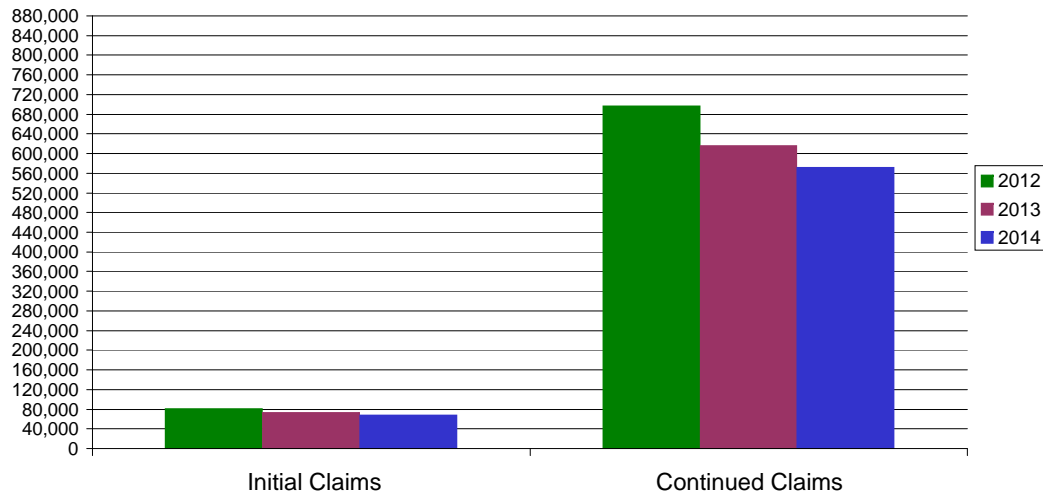
* Includes UI, EUC08, Workshare & Interstate Liable.

Equal Opportunity Employer / Program / Auxiliary aids and services available upon request to individuals with disabilities / TTY via RI Relay 711.

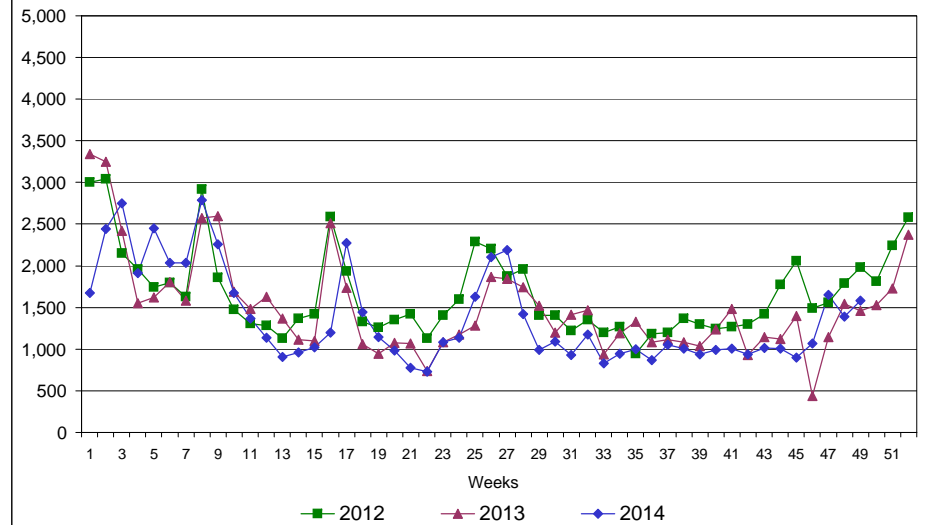
Rhode Island Department of Labor and Training

December 6, 2014

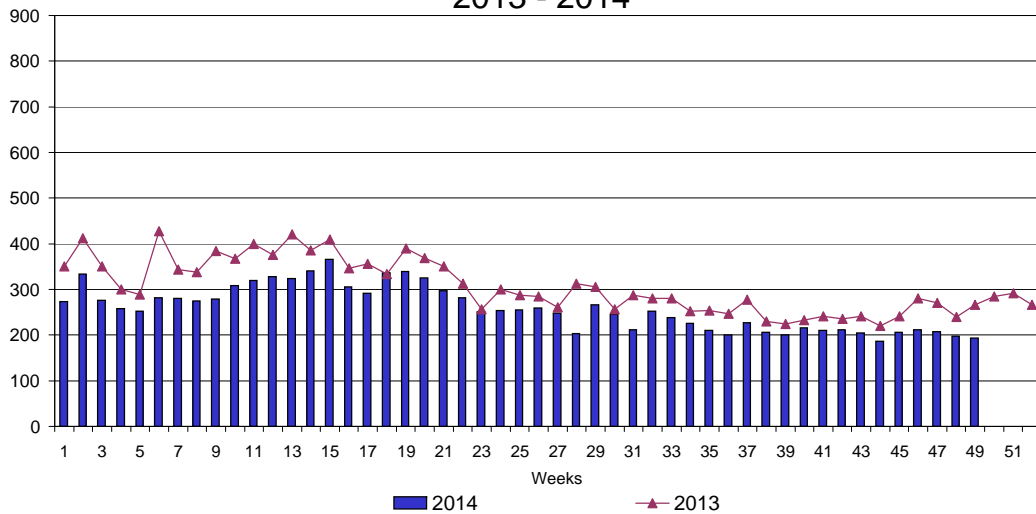
UI Claims Comparison Year to Date



UI Initial Claims 2012 - 2014



UI Exhaustions 2013 - 2014



TDI Claims Comparison Year to Date

