



Rhode Island Department of Labor and Training

Weekly Update of Claims Activity

Week Ending: December 27, 2014

Unemployment Insurance

Initial Claims – 3,203 initial claims were processed during the week ending 12/27/14, an increase of 1,549 from the previous week, and an increase of 831 from a year ago. The number of initial claims filed to date is down 6.1 percent from last year and down 14.3 percent from two years ago.

Continued Claims – 10,298 continued claims were processed during the week of 12/27/14, an increase of 101 from the previous week and a decrease of 1,453 from a year ago. The number of continued claims filed to date is down 7.6 percent from last year and down 18.4 percent from two years ago.

Workshare – gives employers an alternative to layoffs by allowing employees to work reduced hours and collect a percentage of regular UI benefits to compensate for lost pay. This week, 14 initial claims and 149 continued claims were processed. An estimated 3 layoffs were prevented this week, as a result of Workshare.

Exhaustions – 221 individuals exhausted their regular payments this week, an increase of 11 from the previous week and a decrease of 46 from a year ago.

Temporary Disability Insurance

Temporary Disability Insurance – 372 initial claims and 7,415 continued claims were processed for Temporary Disability Insurance. The average weekly TDI payment is \$459 per week. Rhode Island is currently paying an average of 10.7 weeks per new claim. To date there have been 45,030 TDI initial claims filed.

Temporary Caregiver Insurance – Of the 372 TDI initial claims, 94 (25.3%) were TCI Claims. This week 326 TCI payments were issued totaling \$150,966. The average weekly TCI payment was \$463. Of the 45,030 TDI claims filed to date, 5,049 or 11.2% were TCI claims.

	Initial Claims			Continued Claims	TOTAL - Initial and Continued Claims			
	Total	New	Additional		Current Week	Previous Week	Year Ago	Two Years Ago
Total - All programs*	3,246	1,511	1,735	10,985	14,231	12,632	15,226	17,366
UI Claims	3,203	1,497	1,706	10,298	13,501	11,851	14,123	16,192
Change from:								
Previous Week	1,549	535	1,014	101	1,650			
Year Ago	831	400	431	-1,453	-622			
Two Years Ago	621	176	445	-3,312	-2,691			
Interstate-Liable	29	9	20	538	567	585	643	554
Workshare	14	5	9	149	163	196	460	620
Workshare Equivalency	3	1	2	35	38	49	126	152
UI Exhaustions	-	-	-	221	221	210	267	324
TDI Claims (Includes TCI)	372	290	82	7,415	7,787	8,200	6,362	6,170
Change from:								
Previous Week	-403	-276	-127	-10	-413			
Year Ago	5	-24	29	1,420	1,425			

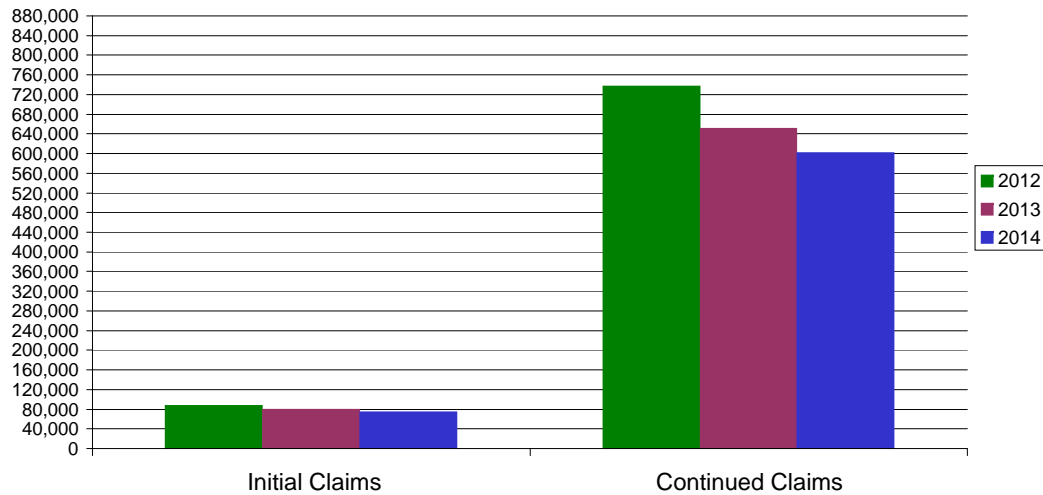
* Includes UI, EUC08, Workshare & Interstate Liable.

Equal Opportunity Employer / Program / Auxiliary aids and services available upon request to individuals with disabilities / TTY via RI Relay 711.

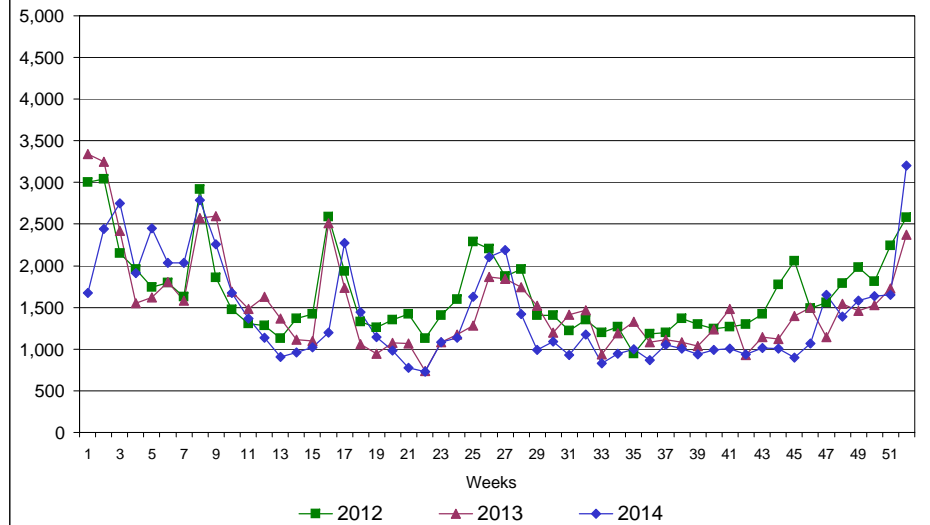
Rhode Island Department of Labor and Training

December 27, 2014

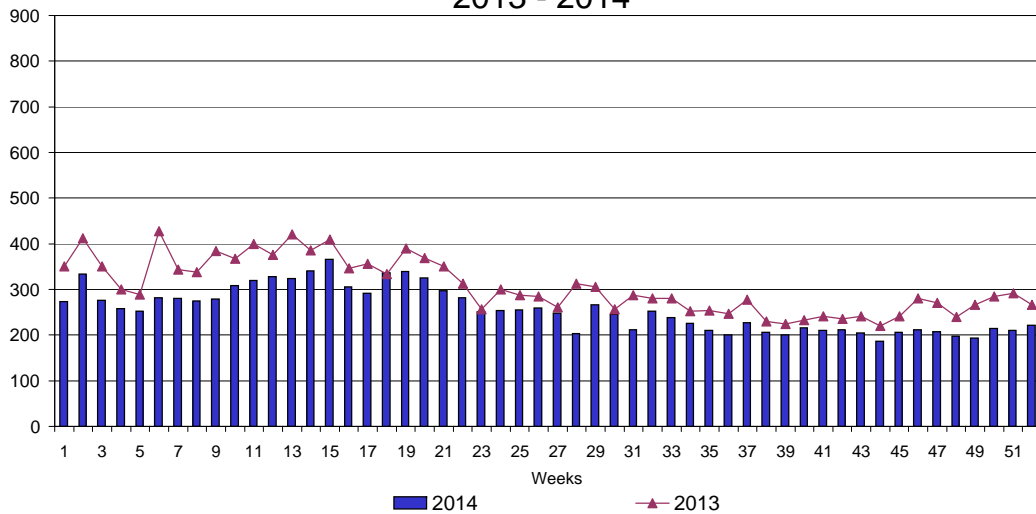
UI Claims Comparison Year to Date



UI Initial Claims 2012 - 2014



UI Exhaustions 2013 - 2014



TDI Claims Comparison Year to Date

