



Rhode Island Department of Labor and Training

Weekly Update of Claims Activity

Week Ending: March 7, 2015

Unemployment Insurance

Initial Claims – 1,135 initial claims were processed during the week ending 3/7/15, a decrease of 539 from the previous week, and a decrease of 538 from a year ago. The number of initial claims filed to date is down 11.6 percent from last year and down 13.2 percent from two years ago.

Continued Claims – 14,897 continued claims were processed during the week of 3/7/15, a decrease of 1,916 from the previous week and a decrease of 2,362 from a year ago. The number of continued claims filed to date is down 13.0 percent from last year and down 16.8 percent from two years ago.

Workshare – gives employers an alternative to layoffs by allowing employees to work reduced hours and collect a percentage of regular UI benefits to compensate for lost pay. This week, 3 initial claims and 245 continued claims were processed.

Exhaustions – 184 individuals exhausted their regular payments this week, a decrease of 3 from the previous week and a decrease of 124 from a year ago.

Temporary Disability Insurance

Temporary Disability Insurance – 1,296 initial claims and 7,912 continued claims were processed for Temporary Disability Insurance. The average weekly TDI payment is \$457 per week. Rhode Island is currently paying an average of 10.8 weeks per new claim. To date there have been 8,952 TDI initial claims filed.

Temporary Caregiver Insurance – Of the 1,296 TDI initial claims, 117 (9.0%) were TCI Claims. This week 331 TCI payments were issued totaling \$161,998. The average weekly TCI payment was \$489. Of the 8,952 TDI claims filed in 2015, 1,032 or 11.5% were TCI claims.

	Initial Claims			Continued Claims	TOTAL - Initial and Continued Claims			
	Total	New	Additional		Current Week	Previous Week	Year Ago	Two Years Ago
Total - All programs*	1,162	792	370	15,715	16,877	19,295	20,182	20,732
UI Claims	1,135	775	360	14,897	16,032	18,487	18,932	19,623
Change from:								
Previous Week	-539	-334	-205	-1,916	-2,455			
Year Ago	-538	-285	-253	-2,362	-2,900			
Two Years Ago	-552	-113	-439	-3,039	-3,591			
Interstate-Liable	24	14	10	573	597	585	792	565
Workshare	3	3	0	245	248	223	458	544
Workshare Equivalency	1	1	0	53	54	60	120	144
UI Exhaustions	-	-	-	184	184	187	308	367
TDI Claims (Includes TCI)	1,296	1,022	274	7,912	9,208	8,306	8,229	8,361
Change from:								
Previous Week	670	547	123	232	902			
Year Ago	353	262	91	626	979			

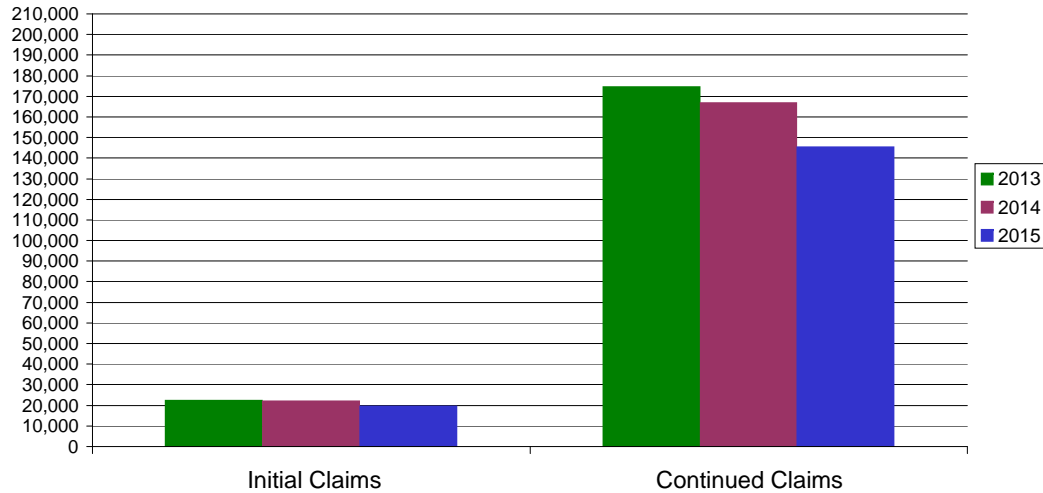
* Includes UI, EUC08, Workshare & Interstate Liable.

Equal Opportunity Employer / Program / Auxiliary aids and services available upon request to individuals with disabilities / TTY via RI Relay 711.

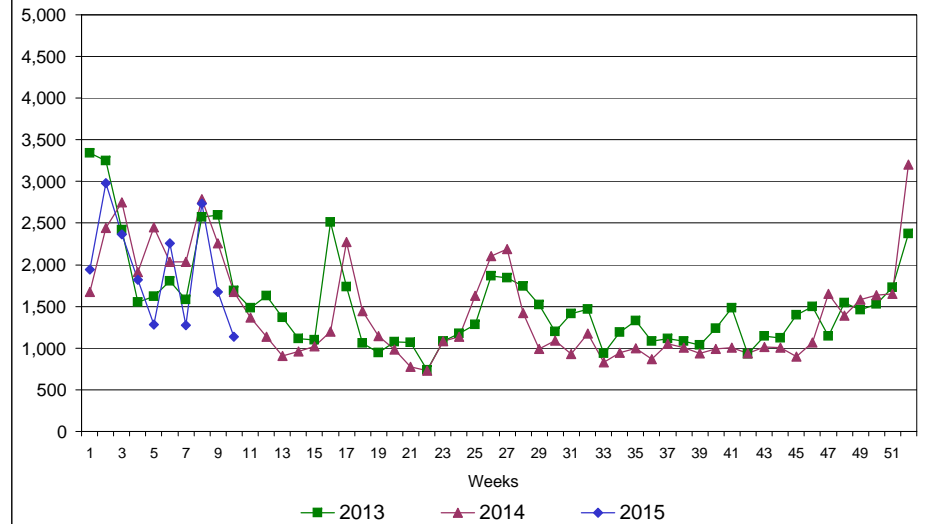
Rhode Island Department of Labor and Training

March 7, 2014

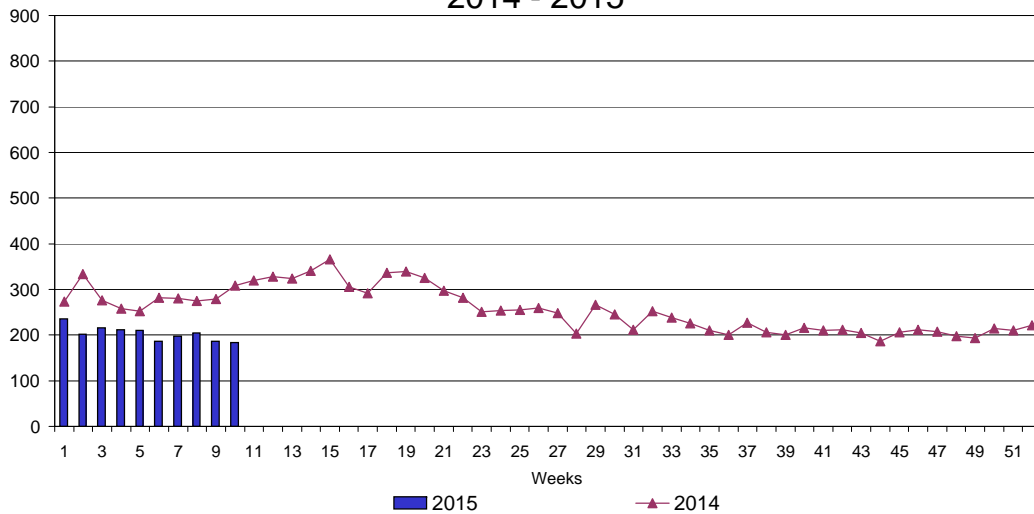
UI Claims Comparison Year to Date



UI Initial Claims 2013 - 2015



UI Exhaustions 2014 - 2015



TDI Claims Comparison Year to Date

