



## Rhode Island Department of Labor and Training

# *Weekly Update of Claims Activity*

*Week Ending: March 14, 2015*

### *Unemployment Insurance*

**Initial Claims** – 946 initial claims were processed during the week ending 3/14/15, a decrease of 189 from the previous week, and a decrease of 419 from a year ago. The number of initial claims filed to date is down 12.7 percent from last year and down 14.6 percent from two years ago.

**Continued Claims** – 14,327 continued claims were processed during the week of 3/14/15, a decrease of 570 from the previous week and a decrease of 2,462 from a year ago. The number of continued claims filed to date is down 13.2 percent from last year and down 17.0 percent from two years ago.

**Workshare** – gives employers an alternative to layoffs by allowing employees to work reduced hours and collect a percentage of regular UI benefits to compensate for lost pay. This week, 20 initial claims and 242 continued claims were processed. An estimated 6 layoffs were prevented this week, as a result of Workshare.

**Exhaustions** – 182 individuals exhausted their regular payments this week, a decrease of 2 from the previous week and a decrease of 138 from a year ago.

### *Temporary Disability Insurance*

**Temporary Disability Insurance** – 905 initial claims and 7,189 continued claims were processed for Temporary Disability Insurance. The average weekly TDI payment is \$464 per week. Rhode Island is currently paying an average of 10.7 weeks per new claim. To date there have been 9,857 TDI initial claims filed.

**Temporary Caregiver Insurance** – Of the 905 TDI initial claims, 99 (10.9%) were TCI Claims. This week 285 TCI payments were issued totaling \$155,222. The average weekly TCI payment was \$545. Of the 9,857 TDI claims filed in 2015, 1,131 or 11.5% were TCI claims.

	Initial Claims			Continued Claims	TOTAL - Initial and Continued Claims			
	Total	New	Additional		Current Week	Previous Week	Year Ago	Two Years Ago
<b>Total - All programs*</b>	988	556	432	15,121	16,109	16,877	19,350	20,506
<b>UI Claims</b>	946	525	421	14,327	15,273	16,032	18,154	19,044
Change from:								
Previous Week	-189	-250	61	-570	-759			
Year Ago	-419	-331	-88	-2,462	-2,881			
Two Years Ago	-535	-330	-205	-3,236	-3,771			
<b>Interstate-Liable</b>	22	11	11	552	574	597	736	601
<b>Workshare</b>	20	20	0	242	262	248	460	861
<b>Workshare Equivalency</b>	6	6	0	64	70	54	161	197
<b>UI Exhaustions</b>	-	-	-	182	182	184	320	400
<b>TDI Claims (Includes TCI)</b>	905	702	203	7,189	8,094	9,208	7,766	7,750
Change from:								
Previous Week	-391	-320	-71	-723	-1,114			
Year Ago	343	250	93	-15	328			

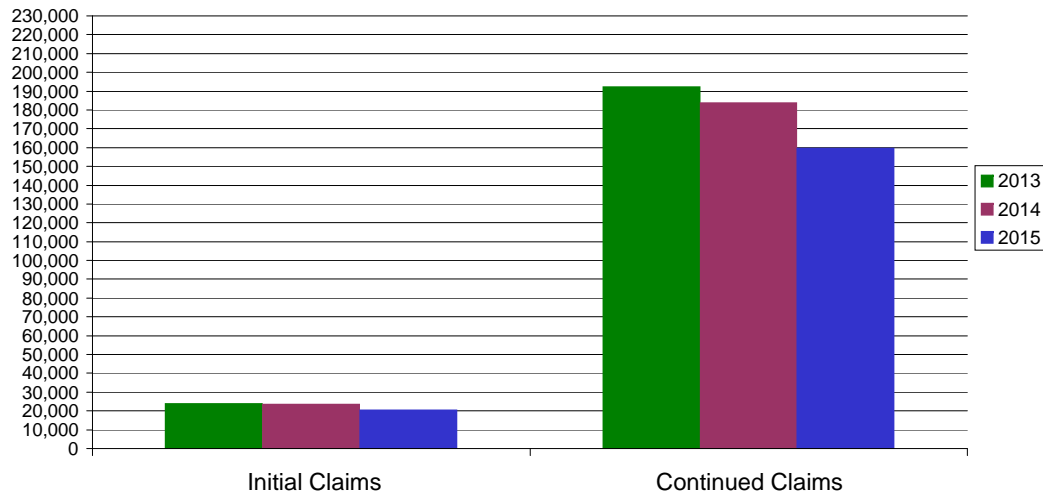
\* Includes UI, EUC08, Workshare & Interstate Liable.

Equal Opportunity Employer / Program / Auxiliary aids and services available upon request to individuals with disabilities / TTY via RI Relay 711.

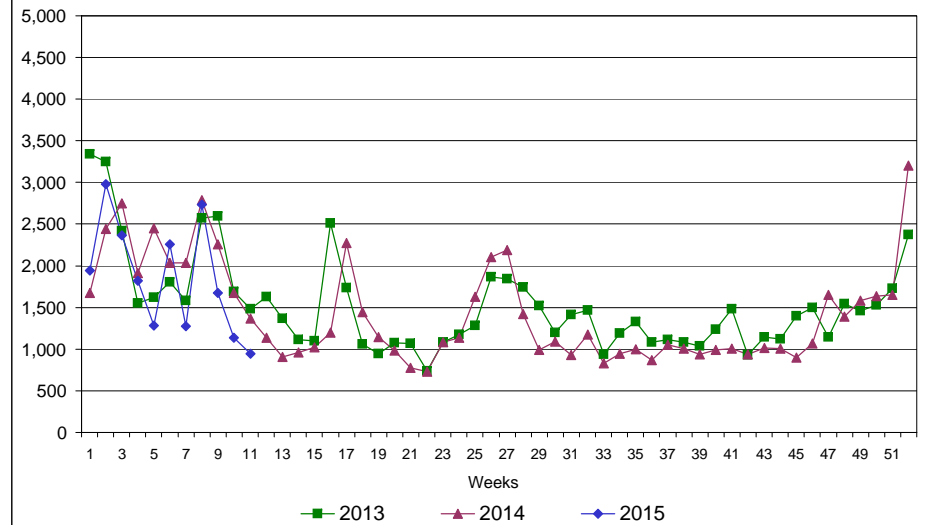
# Rhode Island Department of Labor and Training

## March 14, 2014

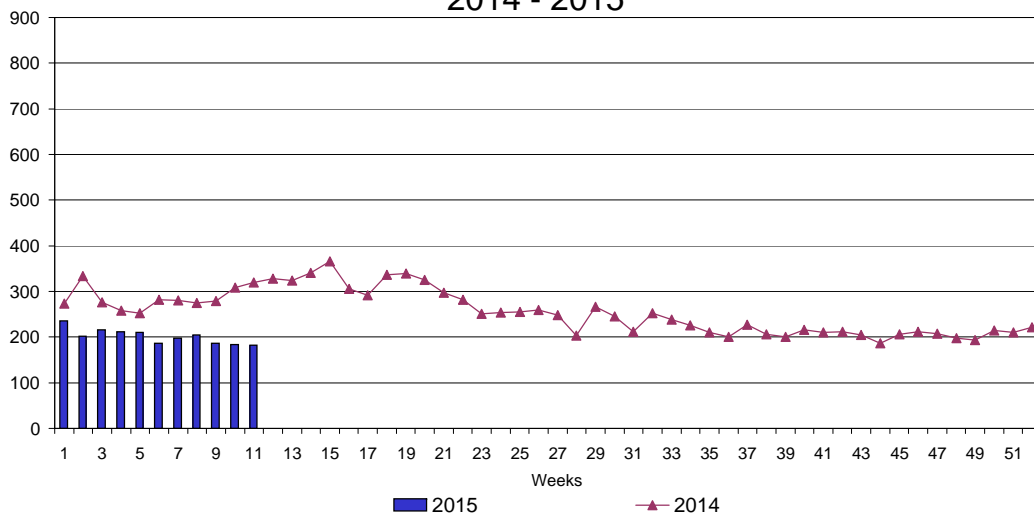
### UI Claims Comparison Year to Date



### UI Initial Claims 2013 - 2015



### UI Exhaustions 2014 - 2015



### TDI Claims Comparison Year to Date

