



Rhode Island Department of Labor and Training

Weekly Update of Claims Activity

Week Ending: March 28, 2015

Unemployment Insurance

Initial Claims – 821 initial claims were processed during the week ending 3/28/15, a decrease of 340 from the previous week, and a decrease of 83 from a year ago. The number of initial claims filed to date is down 11.9 percent from last year and down 16.8 percent from two years ago.

Continued Claims – 13,563 continued claims were processed during the week of 3/28/15, a decrease of 574 from the previous week and a decrease of 1,821 from a year ago. The number of continued claims filed to date is down 13.0 percent from last year and down 17.0 percent from two years ago.

Workshare – gives employers an alternative to layoffs by allowing employees to work reduced hours and collect a percentage of regular UI benefits to compensate for lost pay. This week, 26 initial claims and 237 continued claims were processed. An estimated 7 layoffs were prevented this week, as a result of Workshare.

Exhaustions – 242 individuals exhausted their regular payments this week, an increase of 7 from the previous week and a decrease of 82 from a year ago.

Temporary Disability Insurance

Temporary Disability Insurance – 926 initial claims and 7,673 continued claims were processed for Temporary Disability Insurance. The average weekly TDI payment is \$451 per week. Rhode Island is currently paying an average of 10.7 weeks per new claim. To date there have been 11,481 TDI initial claims filed.

Temporary Caregiver Insurance – Of the 926 TDI initial claims, 131 (14.1%) were TCI Claims. This week 320 TCI payments were issued totaling \$161,493. The average weekly TCI payment was \$505. Of the 11,481 TDI claims filed in 2015, 1,380 or 12.0% were TCI claims.

	Initial Claims			Continued Claims	TOTAL - Initial and Continued Claims			
	Total	New	Additional		Current Week	Previous Week	Year Ago	Two Years Ago
Total - All programs*	867	525	342	14,330	15,197	16,127	17,674	18,889
UI Claims	821	490	331	13,563	14,384	15,298	16,288	17,699
Change from:								
Previous Week	-340	-242	-98	-574	-914			
Year Ago	-83	-54	-29	-1,821	-1,904			
Two Years Ago	-545	-288	-257	-2,770	-3,315			
Interstate-Liable	20	10	10	530	550	581	697	554
Workshare	26	25	1	237	263	248	689	636
Workshare Equivalency	7	7	0	59	66	57	162	164
UI Exhaustions	-	-	-	242	242	235	324	421
TDI Claims (Includes TCI)	926	713	213	7,673	8,599	8,255	8,205	7,963
Change from:								
Previous Week	228	178	50	116	344			
Year Ago	72	52	20	322	394			

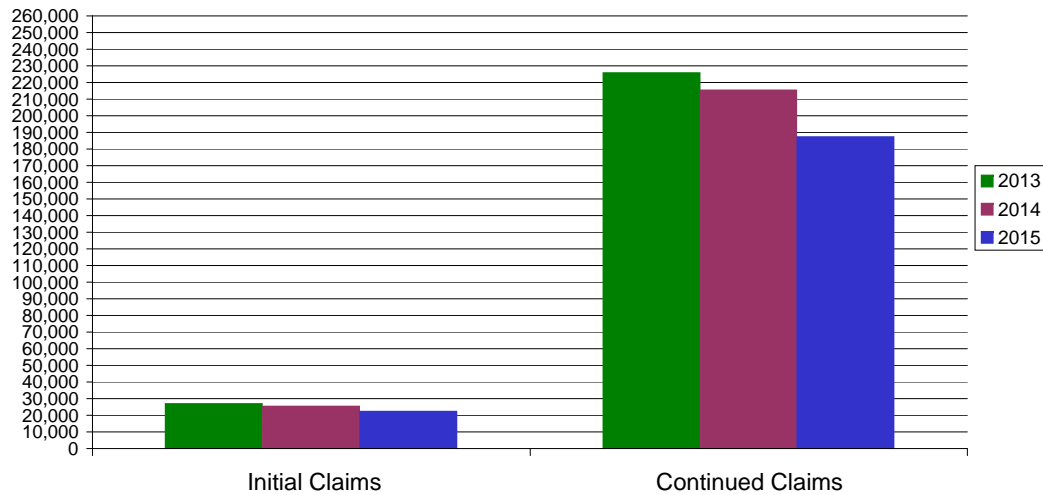
* Includes UI, EUC08, Workshare & Interstate Liable.

Equal Opportunity Employer / Program / Auxiliary aids and services available upon request to individuals with disabilities / TTY via RI Relay 711.

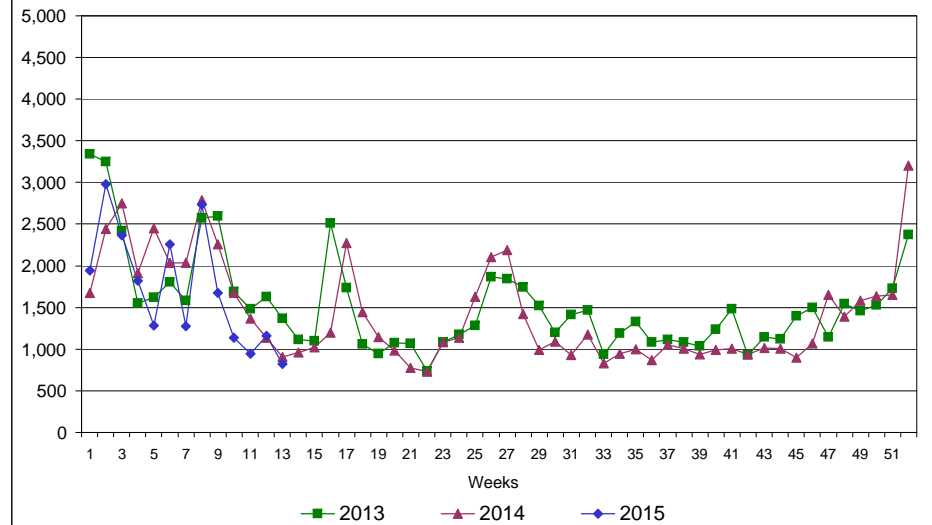
Rhode Island Department of Labor and Training

March 28, 2014

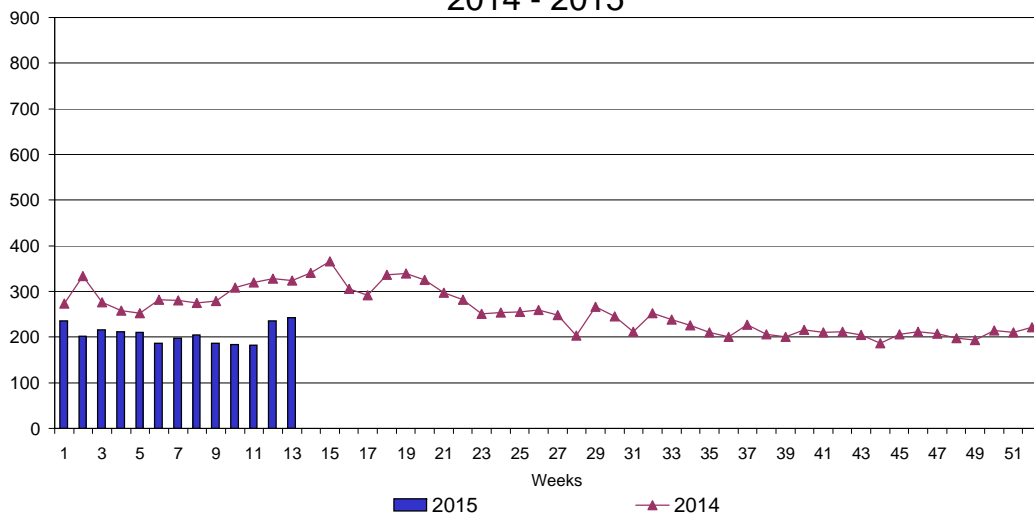
UI Claims Comparison Year to Date



UI Initial Claims 2013 - 2015



UI Exhaustions 2014 - 2015



TDI Claims Comparison Year to Date

