



## Rhode Island Department of Labor and Training

# *Weekly Update of Claims Activity*

*Week Ending: April 11, 2015*

### *Unemployment Insurance*

**Initial Claims** – 869 initial claims were processed during the week ending 4/11/15, an increase of 188 from the previous week, and a decrease of 149 from a year ago. The number of initial claims filed to date is down 12.6 percent from last year and down 17.7 percent from two years ago.

**Continued Claims** – 11,894 continued claims were processed during the week of 4/11/15, a decrease of 1,051 from the previous week and a decrease of 1,495 from a year ago. The number of continued claims filed to date is down 12.8 percent from last year and down 16.9 percent from two years ago.

**Workshare** – gives employers an alternative to layoffs by allowing employees to work reduced hours and collect a percentage of regular UI benefits to compensate for lost pay. This week, 4 initial claim and 225 continued claims were processed.

**Exhaustions** – 218 individuals exhausted their regular payments this week, a decrease of 10 from the previous week and a decrease of 148 from a year ago.

### *Temporary Disability Insurance*

**Temporary Disability Insurance** – 814 initial claims and 7,199 continued claims were processed for Temporary Disability Insurance. The average weekly TDI payment is \$450 per week. Rhode Island is currently paying an average of 10.8 weeks per new claim. To date there have been 13,263 TDI initial claims filed.

**Temporary Caregiver Insurance** – Of the 814 TDI initial claims, 137 (16.8%) were TCI Claims. This week 305 TCI payments were issued totaling \$151,019. The average weekly TCI payment was \$495. Of the 13,263 TDI claims filed in 2015, 1,642 or 12.4% were TCI claims.

	Initial Claims			Continued Claims	TOTAL - Initial and Continued Claims			
	Total	New	Additional		Current Week	Previous Week	Year Ago	Two Years Ago
<b>Total - All programs*</b>	894	573	321	12,607	13,501	14,418	15,419	16,102
<b>UI Claims</b>	869	559	310	11,894	12,763	13,626	14,407	15,088
Change from:								
Previous Week	188	160	28	-1,051	-863			
Year Ago	-149	-180	31	-1,495	-1,644			
Two Years Ago	-227	-79	-148	-2,098	-2,325			
<b>Interstate-Liable</b>	21	11	10	488	509	536	637	556
<b>Workshare</b>	4	3	1	225	229	256	375	458
<b>Workshare Equivalency</b>	1	1	0	56	57	61	95	120
<b>UI Exhaustions</b>	-	-	-	218	218	228	366	409
<b>TDI Claims (Includes TCI)</b>	814	638	176	7,199	8,013	7,832	8,236	7,581
Change from:								
Previous Week	-154	-103	-51	335	181			
Year Ago	-463	-379	-84	240	-223			

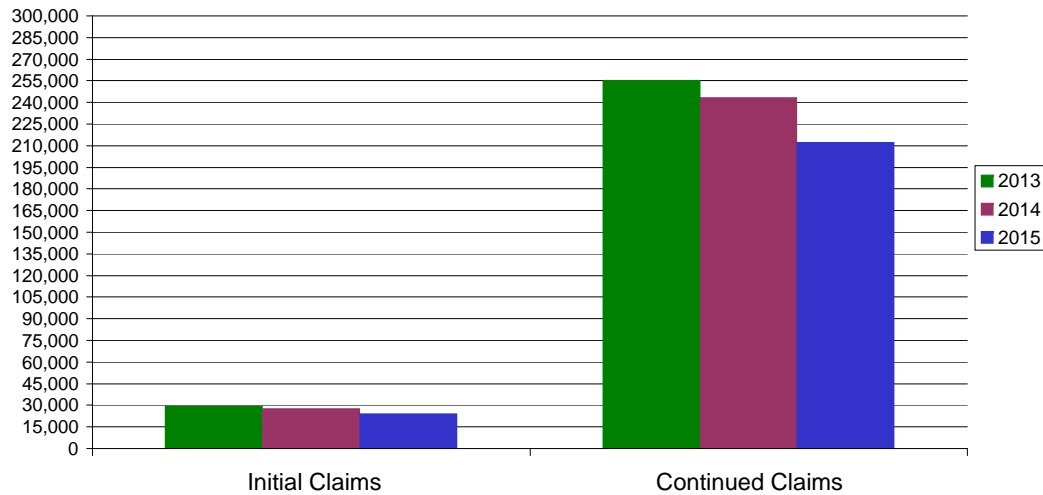
\* Includes UI, EUC08, Workshare & Interstate Liable.

Equal Opportunity Employer / Program / Auxiliary aids and services available upon request to individuals with disabilities / TTY via RI Relay 711.

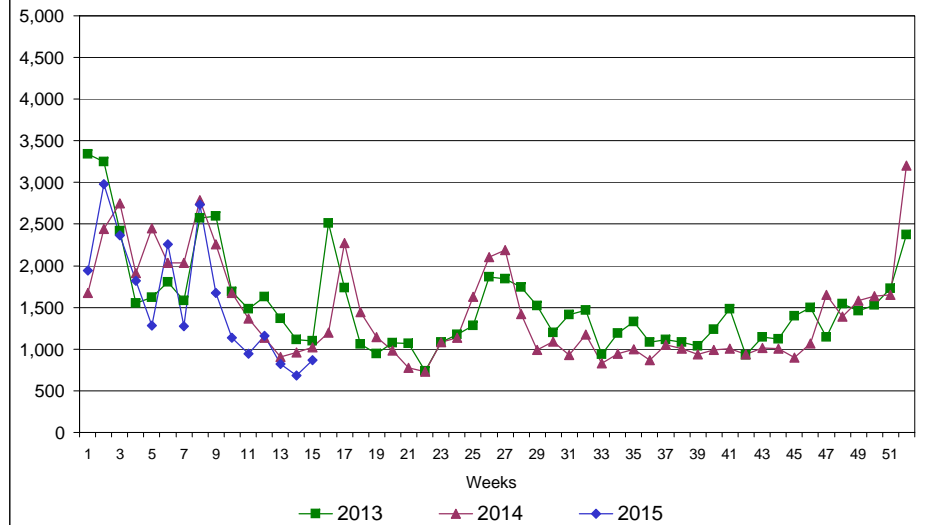
# Rhode Island Department of Labor and Training

## April 11, 2014

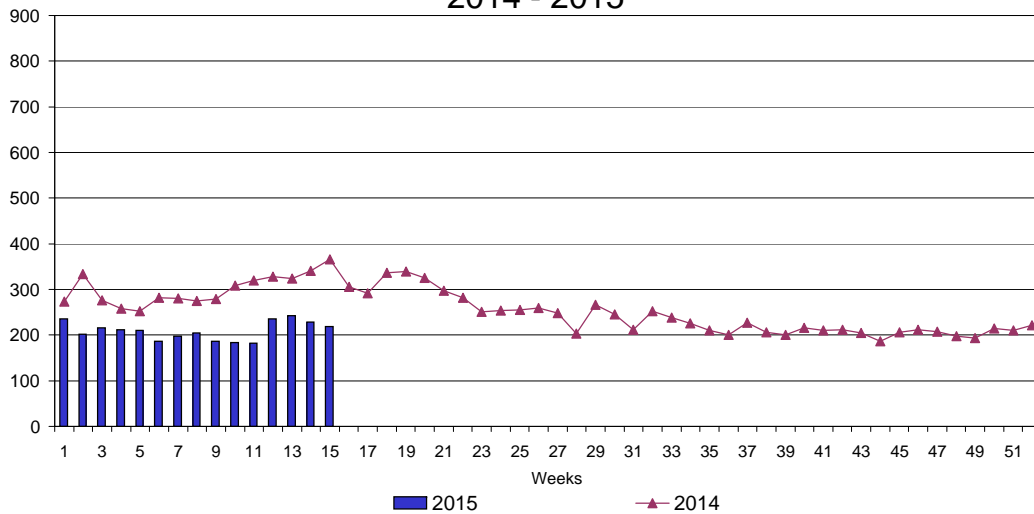
### UI Claims Comparison Year to Date



### UI Initial Claims 2013 - 2015



### UI Exhaustions 2014 - 2015



### TDI Claims Comparison Year to Date

