



Rhode Island Department of Labor and Training

Weekly Update of Claims Activity

Week Ending: April 18, 2015

Unemployment Insurance

Initial Claims – 980 initial claims were processed during the week ending 4/18/15, an increase of 111 from the previous week, and a decrease of 221 from a year ago. The number of initial claims filed to date is down 12.9 percent from last year and down 21.2 percent from two years ago.

Continued Claims – 10,952 continued claims were processed during the week of 4/18/15, a decrease of 942 from the previous week and a decrease of 1,292 from a year ago. The number of continued claims filed to date is down 12.7 percent from last year and down 16.8 percent from two years ago.

Workshare – gives employers an alternative to layoffs by allowing employees to work reduced hours and collect a percentage of regular UI benefits to compensate for lost pay. This week, 10 initial claim and 218 continued claims were processed. An estimated 2 layoffs were prevented this week, as a result of Workshare.

Exhaustions – 231 individuals exhausted their regular payments this week, an increase of 13 from the previous week and a decrease of 75 from a year ago.

Temporary Disability Insurance

Temporary Disability Insurance – 877 initial claims and 6,709 continued claims were processed for Temporary Disability Insurance. The average weekly TDI payment is \$458 per week. Rhode Island is currently paying an average of 10.8 weeks per new claim. To date there have been 14,140 TDI initial claims filed.

Temporary Caregiver Insurance – Of the 877 TDI initial claims, 117 (13.3%) were TCI Claims. This week 286 TCI payments were issued totaling \$136,702. The average weekly TCI payment was \$478. Of the 14,140 TDI claims filed in 2015, 1,759 or 12.4% were TCI claims.

	Initial Claims			Continued Claims	TOTAL - Initial and Continued Claims			
	Total	New	Additional		Current Week	Previous Week	Year Ago	Two Years Ago
Total - All programs*	1,010	605	405	11,653	12,663	13,501	14,274	16,406
UI Claims	980	585	395	10,952	11,932	12,763	13,445	15,366
Change from:								
Previous Week	111	26	85	-942	-831			
Year Ago	-221	16	-237	-1,292	-1,513			
Two Years Ago	-1,533	-310	-1,223	-1,901	-3,434			
Interstate-Liable	20	11	9	483	503	509	585	549
Workshare	10	9	1	218	228	229	244	491
Workshare Equivalency	2	2	0	53	55	57	62	138
UI Exhaustions	-	-	-	231	231	218	306	346
TDI Claims (Includes TCI)	877	689	188	6,709	7,586	8,013	7,968	7,631
Change from:								
Previous Week	63	51	12	-490	-427			
Year Ago	241	189	52	-623	-382			

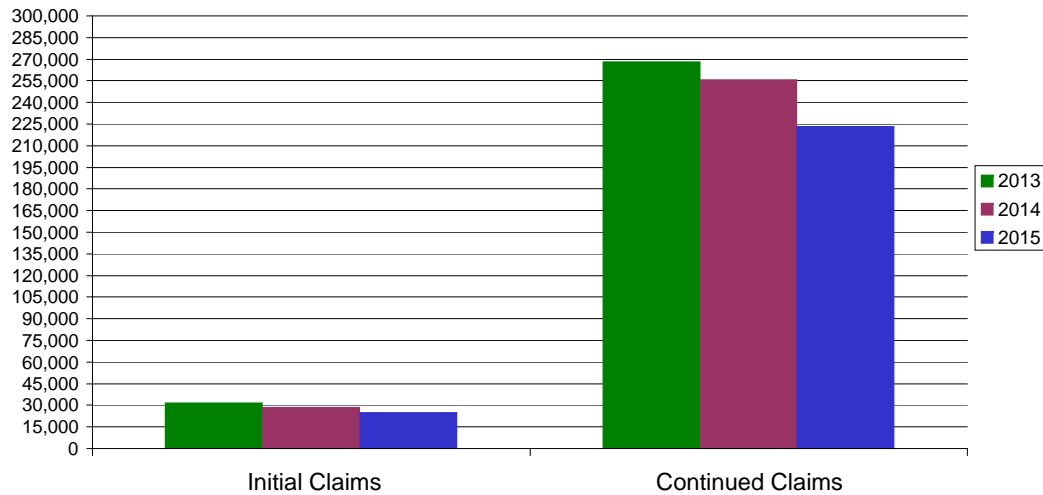
* Includes UI, EUC08, Workshare & Interstate Liable.

Equal Opportunity Employer / Program / Auxiliary aids and services available upon request to individuals with disabilities / TTY via RI Relay 711.

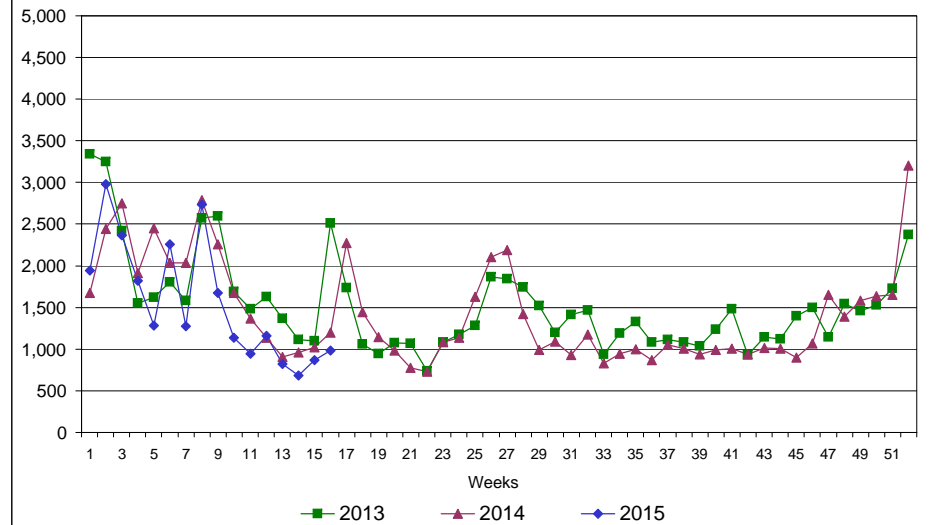
Rhode Island Department of Labor and Training

April 18, 2014

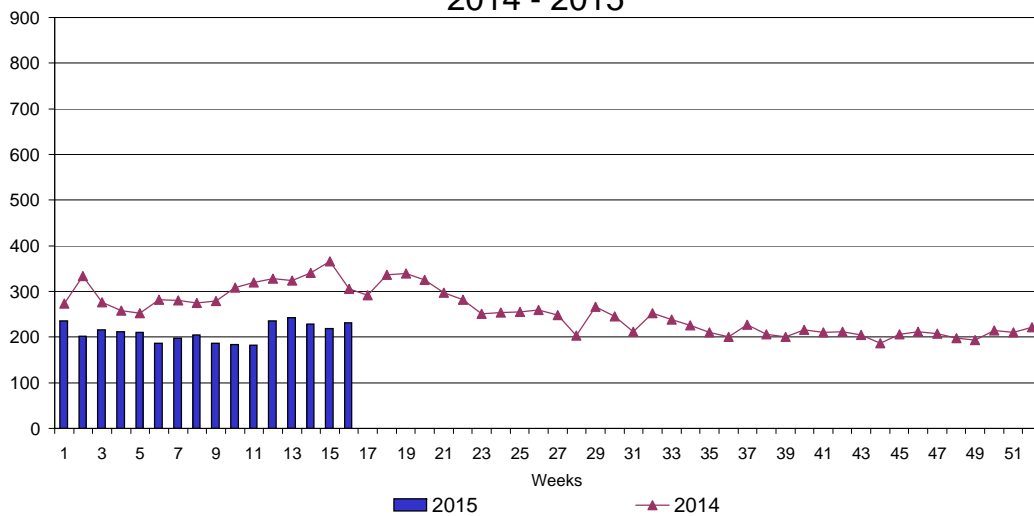
UI Claims Comparison Year to Date



UI Initial Claims 2013 - 2015



UI Exhaustions 2014 - 2015



TDI Claims Comparison Year to Date

