



## Rhode Island Department of Labor and Training

# *Weekly Update of Claims Activity*

*Week Ending: May 2, 2015*

### *Unemployment Insurance*

**Initial Claims** – 798 initial claims were processed during the week ending 5/2/15, a decrease of 2,283 from the previous week, and a decrease of 649 from a year ago. The number of initial claims filed to date is down 10.9 percent from last year and down 16.3 percent from two years ago.

**Continued Claims** – 11,311 continued claims were processed during the week of 5/2/15, an increase of 1,494 from the previous week and a decrease of 1,612 from a year ago. The number of continued claims filed to date is down 12.7 percent from last year and down 16.9 percent from two years ago.

**Workshare** – gives employers an alternative to layoffs by allowing employees to work reduced hours and collect a percentage of regular UI benefits to compensate for lost pay. This week, 2 initial claim and 213 continued claims were processed.

**Exhaustions** – 224 individuals exhausted their regular payments this week, an increase of 34 from the previous week and a decrease of 113 from a year ago.

### *Temporary Disability Insurance*

**Temporary Disability Insurance** – 878 initial claims and 6,790 continued claims were processed for Temporary Disability Insurance. The average weekly TDI payment is \$457 per week. Rhode Island is currently paying an average of 10.8 weeks per new claim. To date there have been 15,744 TDI initial claims filed.

**Temporary Caregiver Insurance** – Of the 878 TDI initial claims, 142 (16.2%) were TCI Claims. This week 387 TCI payments were issued totaling \$198,767. The average weekly TCI payment was \$514. Of the 15,744 TDI claims filed in 2015, 2,045 or 13.0% were TCI claims.

	Initial Claims			Continued Claims	TOTAL - Initial and Continued Claims			
	Total	New	Additional		Current Week	Previous Week	Year Ago	Two Years Ago
<b>Total - All programs*</b>	816	456	360	11,923	12,739	13,557	15,439	13,653
<b>UI Claims</b>	798	446	352	11,311	12,109	12,898	14,370	12,705
Change from:								
Previous Week	-2,283	-658	-1,625	1,494	-789			
Year Ago	-649	-333	-316	-1,612	-2,261			
Two Years Ago	-259	-209	-50	-337	-596			
<b>Interstate-Liable</b>	16	9	7	399	415	460	538	473
<b>Workshare</b>	2	1	1	213	215	199	531	475
<b>Workshare Equivalency</b>	1	0	1	48	49	49	121	125
<b>UI Exhaustions</b>	-	-	-	224	224	190	337	333
<b>TDI Claims (Includes TCI)</b>	878	688	190	6,790	7,668	7,168	7,999	6,997
Change from:								
Previous Week	152	143	9	348	500			
Year Ago	-3	-13	10	-328	-331			

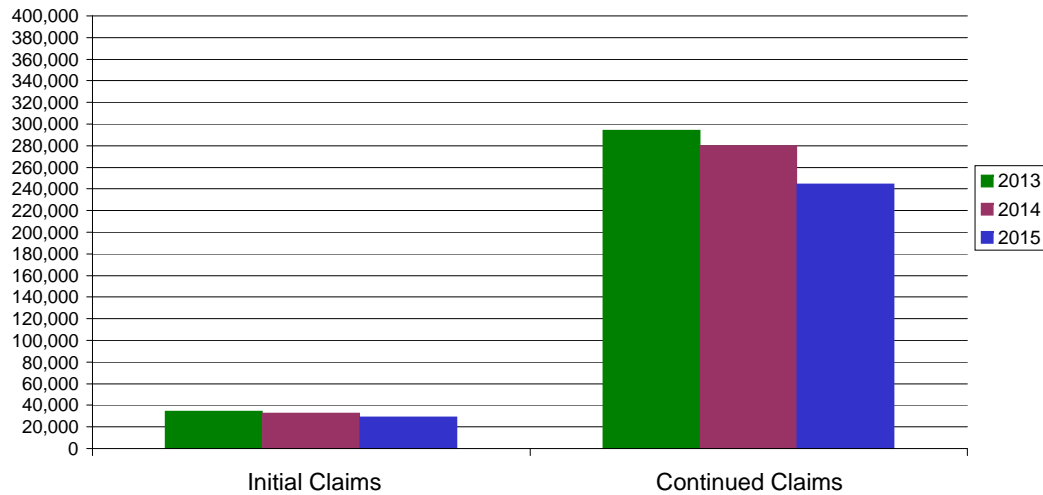
\* Includes UI, EUC08, Workshare & Interstate Liable.

Equal Opportunity Employer / Program / Auxiliary aids and services available upon request to individuals with disabilities / TTY via RI Relay 711.

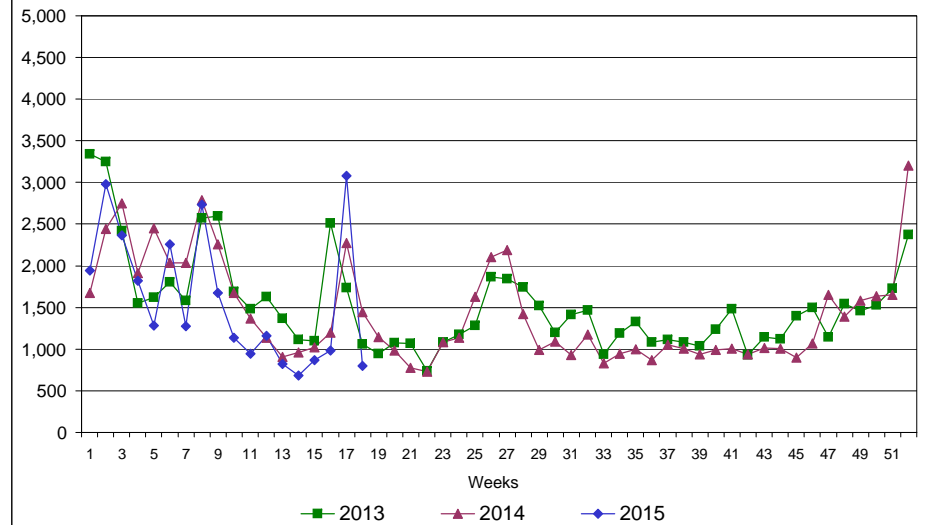
# Rhode Island Department of Labor and Training

## May 2, 2015

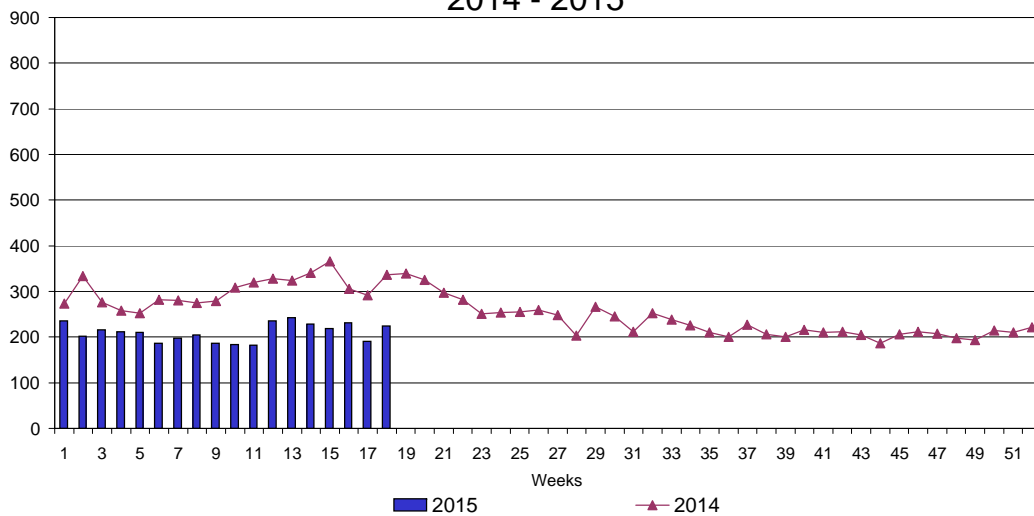
### UI Claims Comparison Year to Date



### UI Initial Claims 2013 - 2015



### UI Exhaustions 2014 - 2015



### TDI Claims Comparison Year to Date

