



Rhode Island Department of Labor and Training

Weekly Update of Claims Activity

Week Ending: May 9, 2015

Unemployment Insurance

Initial Claims – 849 initial claims were processed during the week ending 5/9/15, an increase of 51 from the previous week, and a decrease of 298 from a year ago. The number of initial claims filed to date is down 11.4 percent from last year and down 16.2 percent from two years ago.

Continued Claims – 8,809 continued claims were processed during the week of 5/9/15, a decrease of 2,502 from the previous week and a decrease of 1,513 from a year ago. The number of continued claims filed to date is down 12.8 percent from last year and down 17.0 percent from two years ago.

Workshare – gives employers an alternative to layoffs by allowing employees to work reduced hours and collect a percentage of regular UI benefits to compensate for lost pay. This week, 30 initial claim and 107 continued claims were processed.

Exhaustions – 182 individuals exhausted their regular payments this week, a decrease of 42 from the previous week and a decrease of 157 from a year ago.

Temporary Disability Insurance

Temporary Disability Insurance – 1,101 initial claims and 6,514 continued claims were processed for Temporary Disability Insurance. The average weekly TDI payment is \$457 per week. Rhode Island is currently paying an average of 10.7 weeks per new claim. To date there have been 16,845 TDI initial claims filed.

Temporary Caregiver Insurance – Of the 1,101 TDI initial claims, 141 (12.8%) were TCI Claims. This week 297 TCI payments were issued totaling \$146,470. The average weekly TCI payment was \$493. Of the 16,845 TDI claims filed in 2015, 2,186 or 13.0% were TCI claims.

	Initial Claims			Continued Claims	TOTAL - Initial and Continued Claims			
	Total	New	Additional		Current Week	Previous Week	Year Ago	Two Years Ago
Total - All programs*	895	577	318	9,304	10,199	12,739	12,436	12,992
UI Claims	849	537	312	8,809	9,658	12,109	11,469	11,996
Change from:								
Previous Week	51	91	-40	-2,502	-2,451			
Year Ago	-298	-238	-60	-1,513	-1,811			
Two Years Ago	-98	-34	-64	-2,240	-2,338			
Interstate-Liable	16	10	6	388	404	415	570	497
Workshare	30	30	0	107	137	215	397	499
Workshare Equivalency	4	4	0	32	36	49	92	120
UI Exhaustions	-	-	-	182	182	224	339	390
TDI Claims (Includes TCI)	1,101	881	220	6,514	7,615	7,668	8,784	7,153
Change from:								
Previous Week	223	193	30	-276	-53			
Year Ago	-42	-15	-27	-1,127	-1,169			

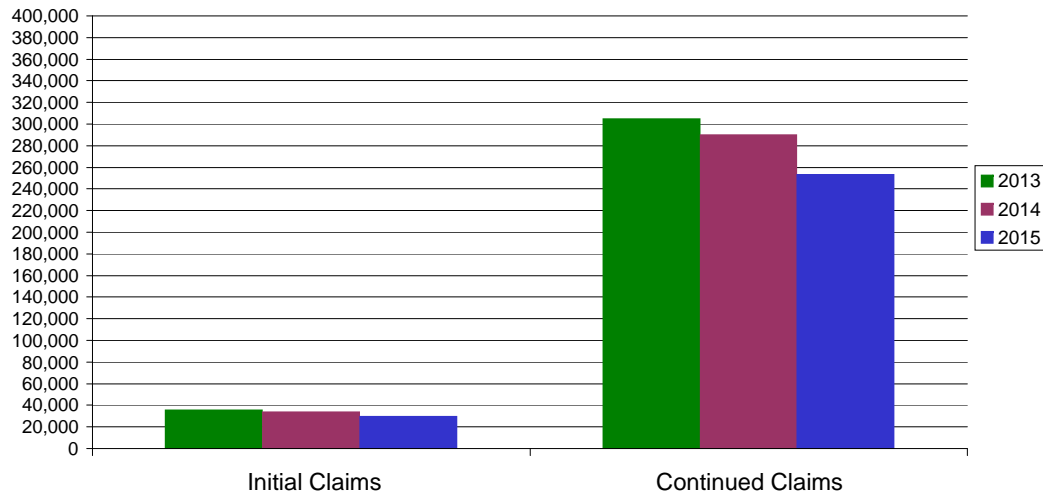
* Includes UI, EUC08, Workshare & Interstate Liable.

Equal Opportunity Employer / Program / Auxiliary aids and services available upon request to individuals with disabilities / TTY via RI Relay 711.

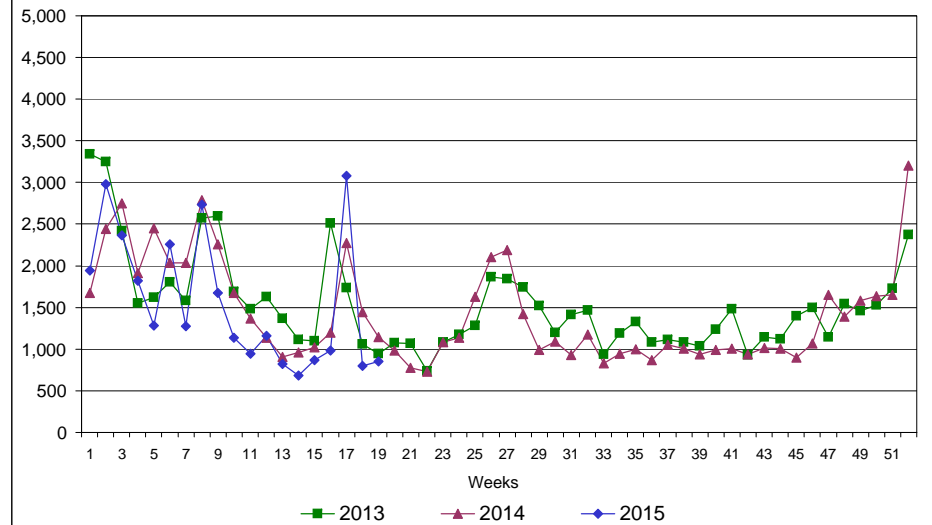
Rhode Island Department of Labor and Training

May 9, 2015

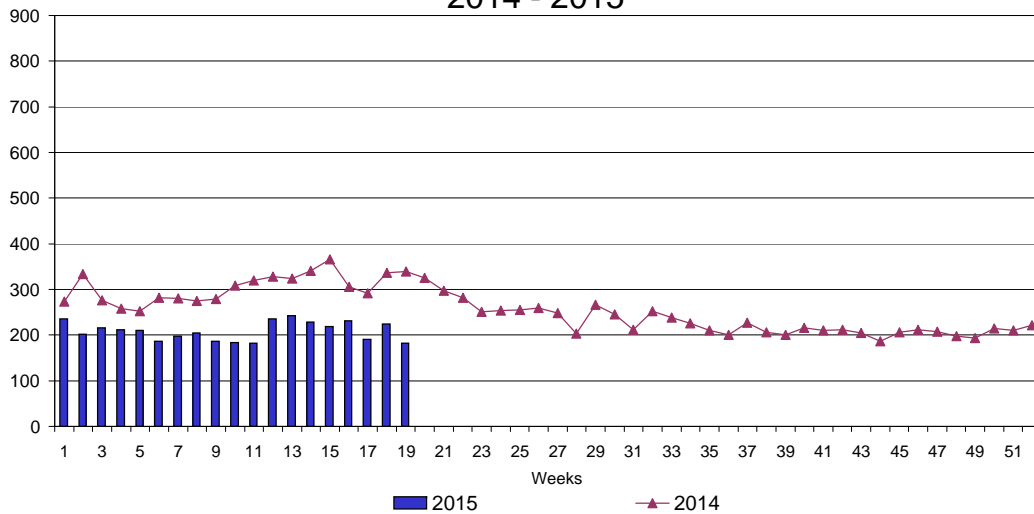
UI Claims Comparison Year to Date



UI Initial Claims 2013 - 2015



UI Exhaustions 2014 - 2015



TDI Claims Comparison Year to Date

