



Rhode Island Department of Labor and Training

Weekly Update of Claims Activity

Week Ending: May 16, 2015

Unemployment Insurance

Initial Claims – 963 initial claims were processed during the week ending 5/16/15, an increase of 114 from the previous week, and a decrease of 19 from a year ago. The number of initial claims filed to date is down 11.1 percent from last year and down 16.0 percent from two years ago.

Continued Claims – 8,351 continued claims were processed during the week of 5/16/15, a decrease of 458 from the previous week and a decrease of 1,491 from a year ago. The number of continued claims filed to date is down 12.8 percent from last year and down 17.3 percent from two years ago.

Workshare – gives employers an alternative to layoffs by allowing employees to work reduced hours and collect a percentage of regular UI benefits to compensate for lost pay. This week, 84 initial claim and 365 continued claims were processed. An estimated 20 layoffs were prevented this week, as a result of Workshare.

Exhaustions – 232 individuals exhausted their regular payments this week, an increase of 50 from the previous week and a decrease of 93 from a year ago.

Temporary Disability Insurance

Temporary Disability Insurance – 721 initial claims and 6,950 continued claims were processed for Temporary Disability Insurance. The average weekly TDI payment is \$461 per week. Rhode Island is currently paying an average of 10.7 weeks per new claim. To date there have been 17,566 TDI initial claims filed.

Temporary Caregiver Insurance – Of the 721 TDI initial claims, 132 (18.3%) were TCI Claims. This week 289 TCI payments were issued totaling \$138,202. The average weekly TCI payment was \$478. Of the 17,566 TDI claims filed in 2015, 2,318 or 13.2% were TCI claims.

	Initial Claims			Continued Claims	TOTAL - Initial and Continued Claims			
	Total	New	Additional		Current Week	Previous Week	Year Ago	Two Years Ago
Total - All programs*	1,067	610	457	9,115	10,182	10,199	11,565	13,024
UI Claims	963	514	449	8,351	9,314	9,658	10,824	12,022
Change from:								
Previous Week	114	-23	137	-458	-344			
Year Ago	-19	-81	62	-1,491	-1,510			
Two Years Ago	-114	-113	-1	-2,594	-2,708			
Interstate-Liable	20	12	8	399	419	404	492	472
Workshare	84	84	0	365	449	137	249	530
Workshare Equivalency	20	20	0	71	91	36	68	129
UI Exhaustions	-	-	-	232	232	182	325	369
TDI Claims (Includes TCI)	721	560	161	6,950	7,671	7,615	7,798	7,366
Change from:								
Previous Week	-380	-321	-59	436	56			
Year Ago	129	103	26	-256	-127			

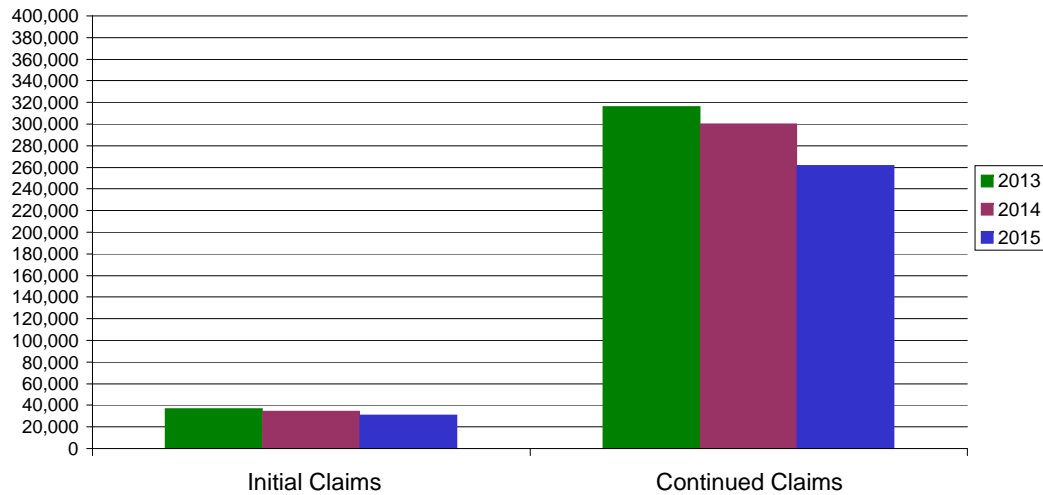
* Includes UI, EUC08, Workshare & Interstate Liable.

Equal Opportunity Employer / Program / Auxiliary aids and services available upon request to individuals with disabilities / TTY via RI Relay 711.

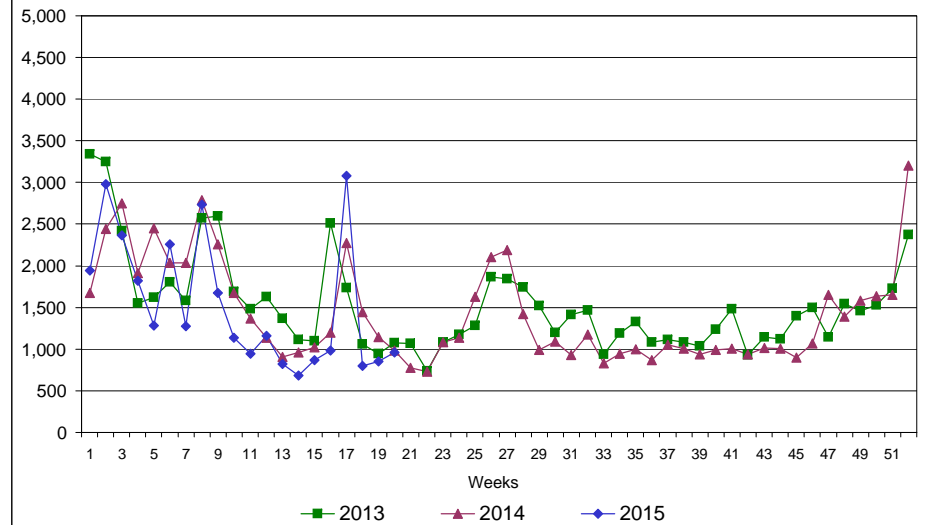
Rhode Island Department of Labor and Training

May 16, 2015

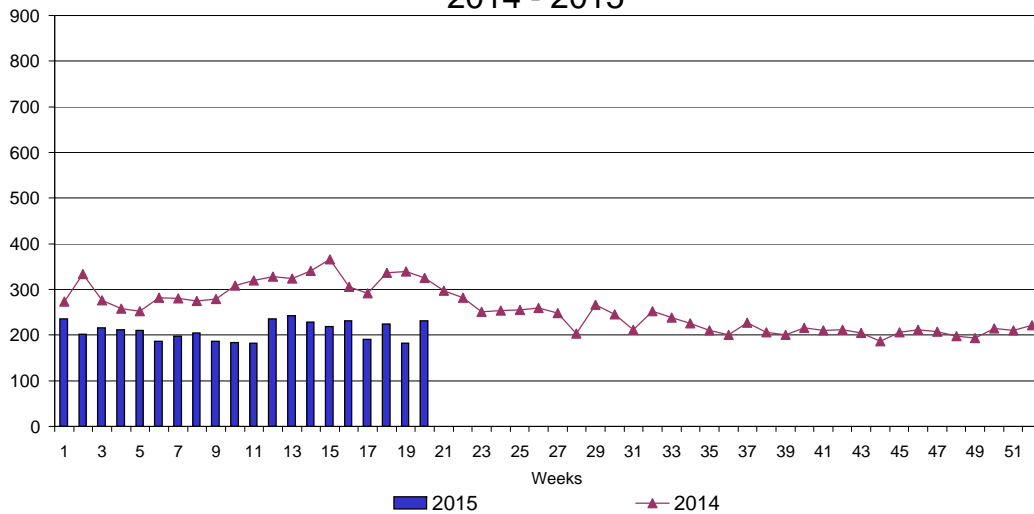
UI Claims Comparison Year to Date



UI Initial Claims 2013 - 2015



UI Exhaustions 2014 - 2015



TDI Claims Comparison Year to Date

