



Rhode Island Department of Labor and Training

Weekly Update of Claims Activity

Week Ending: May 23, 2015

Unemployment Insurance

Initial Claims – 850 initial claims were processed during the week ending 5/23/15, a decrease of 113 from the previous week, and an increase of 71 from a year ago. The number of initial claims filed to date is down 10.7 percent from last year and down 16.1 percent from two years ago.

Continued Claims – 8,248 continued claims were processed during the week of 5/23/15, a decrease of 103 from the previous week and a decrease of 1,355 from a year ago. The number of continued claims filed to date is down 12.9 percent from last year and down 17.3 percent from two years ago.

Workshare – gives employers an alternative to layoffs by allowing employees to work reduced hours and collect a percentage of regular UI benefits to compensate for lost pay. This week, 71 initial claim and 158 continued claims were processed. An estimated 20 layoffs were prevented this week, as a result of Workshare.

Exhaustions – 225 individuals exhausted their regular payments this week, a decrease of 7 from the previous week and a decrease of 72 from a year ago.

Temporary Disability Insurance

Temporary Disability Insurance – 682 initial claims and 6,922 continued claims were processed for Temporary Disability Insurance. The average weekly TDI payment is \$459 per week. Rhode Island is currently paying an average of 10.7 weeks per new claim. To date there have been 18,248 TDI initial claims filed.

Temporary Caregiver Insurance – Of the 682 TDI initial claims, 132 (19.4%) were TCI Claims. This week 317 TCI payments were issued totaling \$155,739. The average weekly TCI payment was \$491. Of the 18,248 TDI claims filed in 2015, 2,450 or 13.4% were TCI claims.

	Initial Claims			Continued Claims	TOTAL - Initial and Continued Claims			
	Total	New	Additional		Current Week	Previous Week	Year Ago	Two Years Ago
Total - All programs*	942	562	380	8,773	9,715	10,182	11,134	12,306
UI Claims	850	481	369	8,248	9,098	9,314	10,382	11,207
Change from:								
Previous Week	-113	-33	-80	-103	-216			
Year Ago	71	44	27	-1,355	-1,284			
Two Years Ago	-214	-134	-80	-1,895	-2,109			
Interstate-Liable	21	10	11	367	388	419	475	501
Workshare	71	71	0	158	229	449	277	598
Workshare Equivalency	20	20	0	41	61	91	70	146
UI Exhaustions	-	-	-	225	225	232	297	351
TDI Claims (Includes TCI)	682	530	152	6,922	7,604	7,671	9,194	7,900
Change from:								
Previous Week	-39	-30	-9	-28	-67			
Year Ago	-262	-218	-44	-1,328	-1,590			

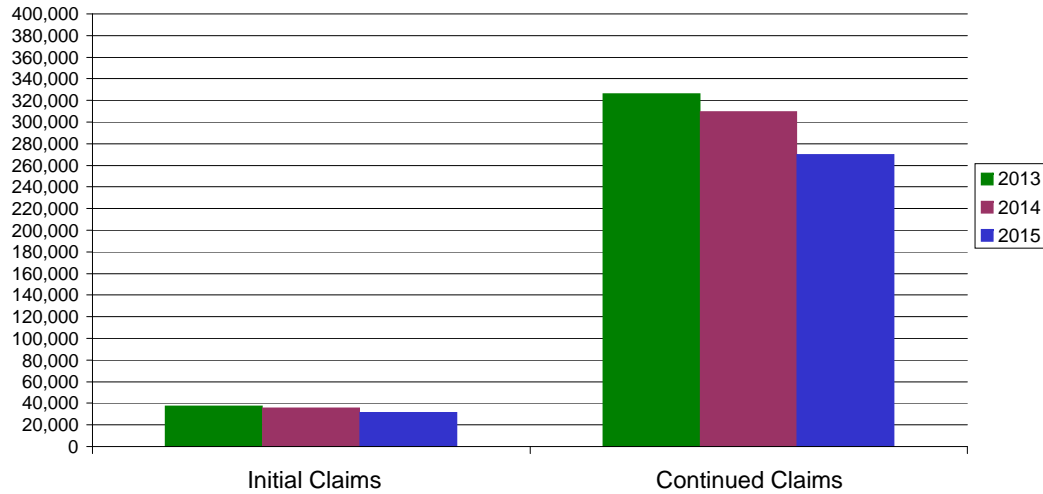
* Includes UI, EUC08, Workshare & Interstate Liable.

Equal Opportunity Employer / Program / Auxiliary aids and services available upon request to individuals with disabilities / TTY via RI Relay 711.

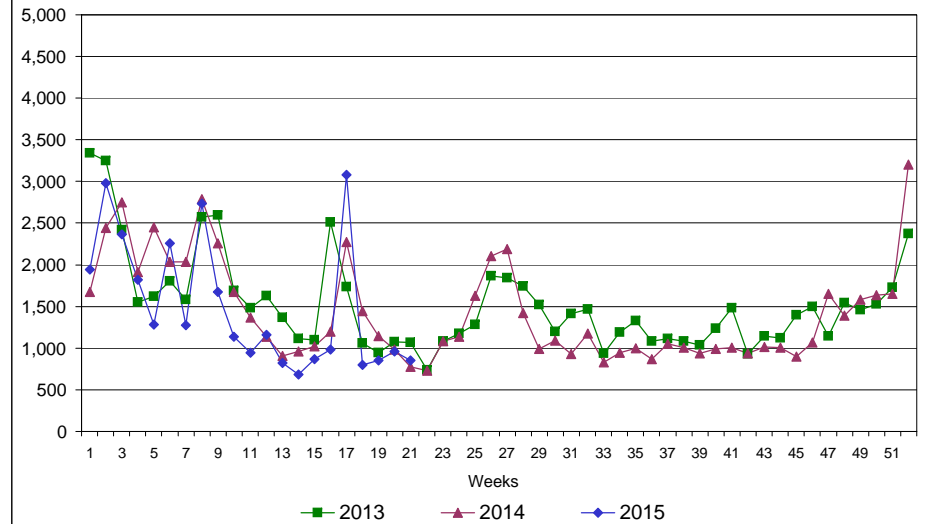
Rhode Island Department of Labor and Training

May 23, 2015

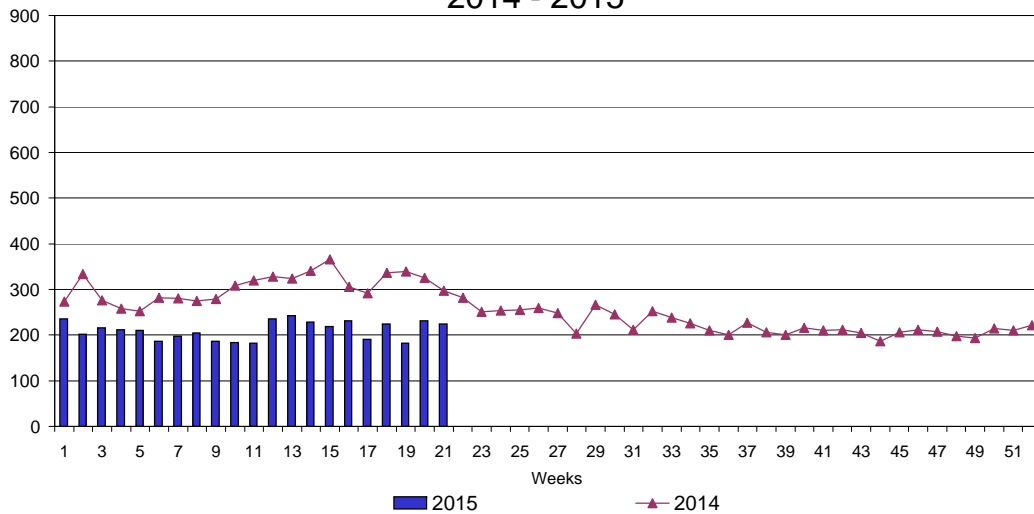
UI Claims Comparison Year to Date



UI Initial Claims 2013 - 2015



UI Exhaustions 2014 - 2015



TDI Claims Comparison Year to Date

