



Rhode Island Department of Labor and Training

Weekly Update of Claims Activity

Week Ending: May 30, 2015

Unemployment Insurance

Initial Claims – 877 initial claims were processed during the week ending 5/30/15, an increase of 27 from the previous week, and an increase of 149 from a year ago. The number of initial claims filed to date is down 10.1 percent from last year and down 15.4 percent from two years ago.

Continued Claims – 8,001 continued claims were processed during the week of 5/30/15, a decrease of 247 from the previous week and a decrease of 1,288 from a year ago. The number of continued claims filed to date is down 12.9 percent from last year and down 17.3 percent from two years ago.

Workshare – gives employers an alternative to layoffs by allowing employees to work reduced hours and collect a percentage of regular UI benefits to compensate for lost pay. This week, 2 initial claim and 677 continued claims were processed.

Exhaustions – 204 individuals exhausted their regular payments this week, a decrease of 21 from the previous week and a decrease of 78 from a year ago.

Temporary Disability Insurance

Temporary Disability Insurance – 983 initial claims and 6,788 continued claims were processed for Temporary Disability Insurance. The average weekly TDI payment is \$461 per week. Rhode Island is currently paying an average of 10.8 weeks per new claim. To date there have been 19,231 TDI initial claims filed.

Temporary Caregiver Insurance – Of the 983 TDI initial claims, 152 (15.5%) were TCI Claims. This week 283 TCI payments were issued totaling \$139,229. The average weekly TCI payment was \$492. Of the 19,231 TDI claims filed in 2015, 2,602 or 13.5% were TCI claims.

	Initial Claims			Continued Claims	TOTAL - Initial and Continued Claims			
	Total	New	Additional		Current Week	Previous Week	Year Ago	Two Years Ago
Total - All programs*	901	573	328	9,030	9,931	9,715	10,632	11,369
UI Claims	877	561	316	8,001	8,878	9,098	10,017	10,396
Change from:								
Previous Week	27	80	-53	-247	-220			
Year Ago	149	143	6	-1,288	-1,139			
Two Years Ago	139	126	13	-1,657	-1,518			
Interstate-Liable	22	12	10	352	374	388	466	474
Workshare	2	0	2	677	679	229	149	499
Workshare Equivalency	0	0	0	151	151	61	39	121
UI Exhaustions	-	-	-	204	204	225	282	313
TDI Claims (Includes TCI)	983	753	230	6,788	7,771	7,604	7,128	6,806
Change from:								
Previous Week	301	223	78	-134	167			
Year Ago	4	-25	29	639	643			

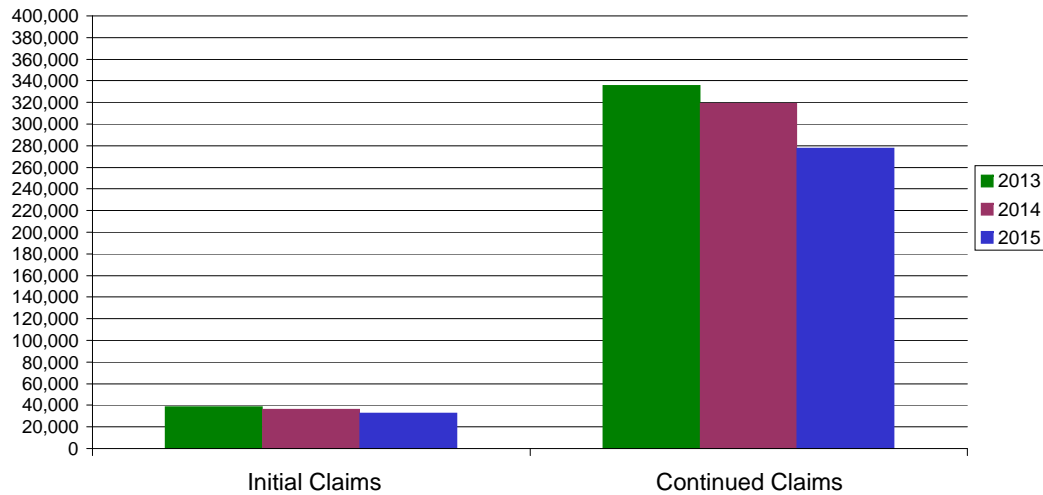
* Includes UI, EUC08, Workshare & Interstate Liable.

Equal Opportunity Employer / Program / Auxiliary aids and services available upon request to individuals with disabilities / TTY via RI Relay 711.

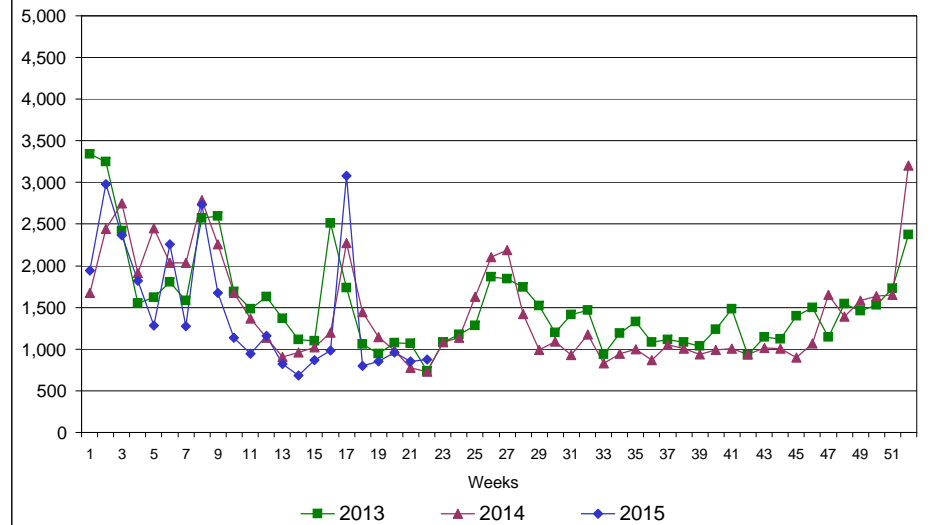
Rhode Island Department of Labor and Training

May 30, 2015

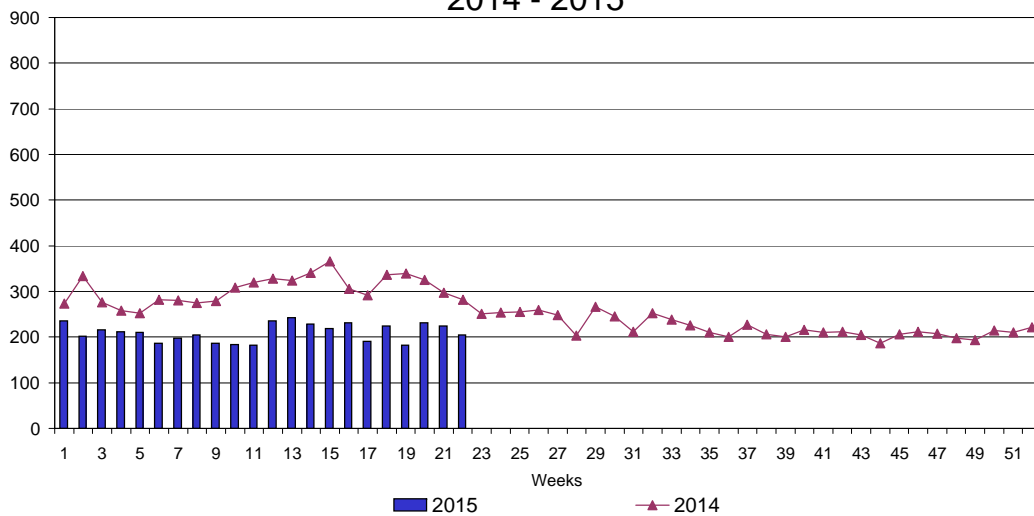
UI Claims Comparison Year to Date



UI Initial Claims 2013 - 2015



UI Exhaustions 2014 - 2015



TDI Claims Comparison Year to Date

