



Rhode Island Department of Labor and Training

Weekly Update of Claims Activity

Week Ending: June 6, 2015

Unemployment Insurance

Initial Claims – 783 initial claims were processed during the week ending 6/6/15, a decrease of 94 from the previous week, and a decrease of 302 from a year ago. The number of initial claims filed to date is down 10.6 percent from last year and down 15.8 percent from two years ago.

Continued Claims – 7,895 continued claims were processed during the week of 6/6/15, a decrease of 106 from the previous week and a decrease of 1,232 from a year ago. The number of continued claims filed to date is down 12.9 percent from last year and down 17.4 percent from two years ago.

Workshare – gives employers an alternative to layoffs by allowing employees to work reduced hours and collect a percentage of regular UI benefits to compensate for lost pay. This week, 20 initial claim and 223 continued claims were processed. An estimated 6 layoffs were prevented this week, as a result of Workshare.

Exhaustions – 193 individuals exhausted their regular payments this week, a decrease of 11 from the previous week and a decrease of 58 from a year ago.

Temporary Disability Insurance

Temporary Disability Insurance – 1,330 initial claims and 7,530 continued claims were processed for Temporary Disability Insurance. The average weekly TDI payment is \$451 per week. Rhode Island is currently paying an average of 10.6 weeks per new claim. To date there have been 20,561 TDI initial claims filed.

Temporary Caregiver Insurance – Of the 1,330 TDI initial claims, 150 (11.3%) were TCI Claims. This week 360 TCI payments were issued totaling \$177,893. The average weekly TCI payment was \$494. Of the 20,561 TDI claims filed in 2015, 2,752 or 13.4% were TCI claims.

	Initial Claims			Continued Claims	TOTAL - Initial and Continued Claims			
	Total	New	Additional		Current Week	Previous Week	Year Ago	Two Years Ago
Total - All programs*	839	510	329	8,481	9,320	9,931	10,923	12,224
UI Claims	783	468	315	7,895	8,678	8,878	10,212	11,047
Change from:								
Previous Week	-94	-93	-1	-106	-200			
Year Ago	-302	-223	-79	-1,232	-1,534			
Two Years Ago	-299	-175	-124	-2,070	-2,369			
Interstate-Liable	36	22	14	363	399	374	459	529
Workshare	20	20	0	223	243	679	252	648
Workshare Equivalency	6	6	0	57	63	151	69	172
UI Exhaustions	-	-	-	193	193	204	251	256
TDI Claims (Includes TCI)	1,330	1,028	302	7,530	8,860	7,771	8,622	7,694
Change from:								
Previous Week	347	275	72	742	1,089			
Year Ago	635	491	144	-397	238			

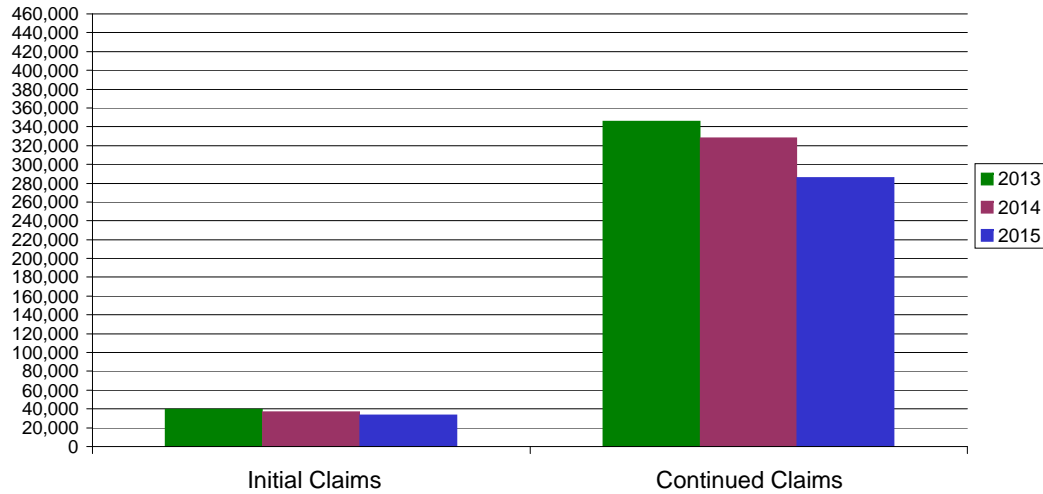
* Includes UI, EUC08, Workshare & Interstate Liable.

Equal Opportunity Employer / Program / Auxiliary aids and services available upon request to individuals with disabilities / TTY via RI Relay 711.

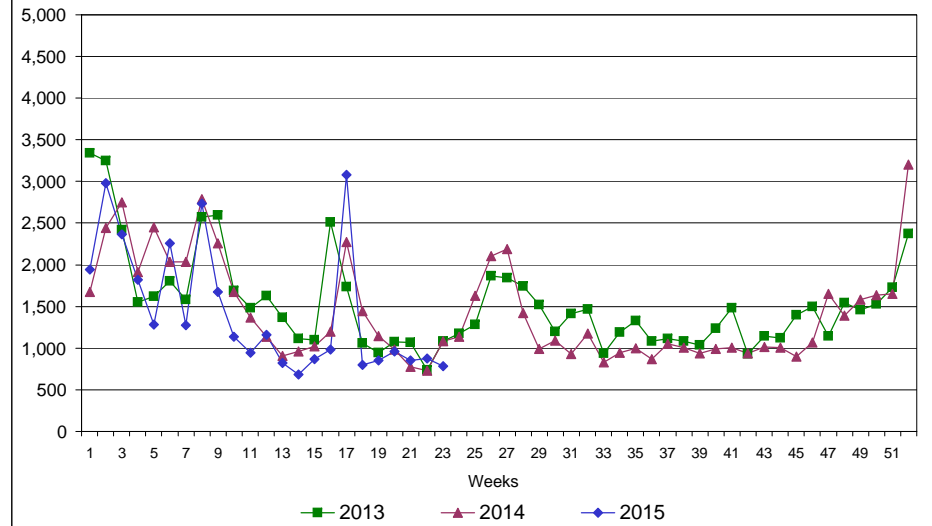
Rhode Island Department of Labor and Training

June 6, 2015

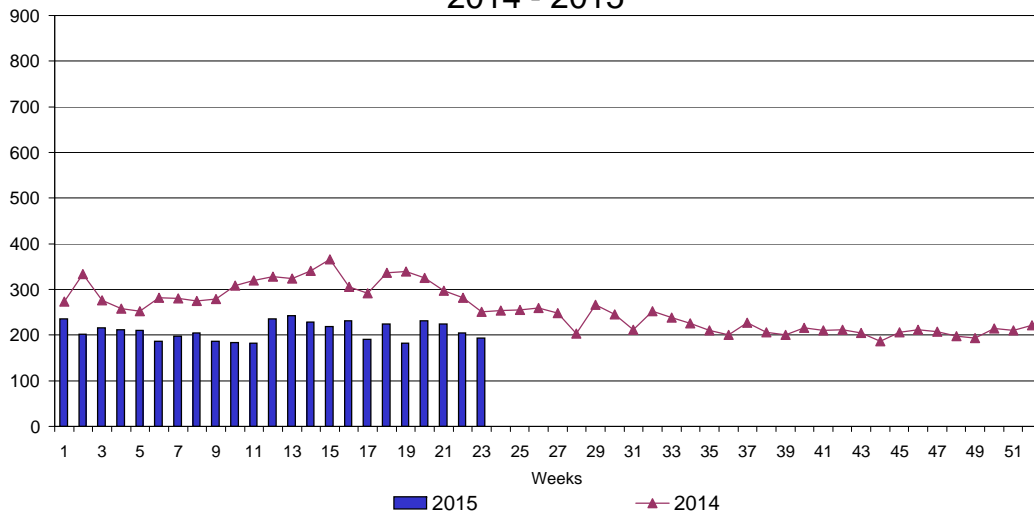
UI Claims Comparison Year to Date



UI Initial Claims 2013 - 2015



UI Exhaustions 2014 - 2015



TDI Claims Comparison Year to Date

