



Rhode Island Department of Labor and Training

Weekly Update of Claims Activity

Week Ending: June 13, 2015

Unemployment Insurance

Initial Claims – 818 initial claims were processed during the week ending 6/13/15, an increase of 35 from the previous week, and a decrease of 320 from a year ago. The number of initial claims filed to date is down 11.1 percent from last year and down 16.2 percent from two years ago.

Continued Claims – 7,887 continued claims were processed during the week of 6/13/15, a decrease of 8 from the previous week and a decrease of 1,167 from a year ago. The number of continued claims filed to date is down 12.9 percent from last year and down 17.4 percent from two years ago.

Workshare – gives employers an alternative to layoffs by allowing employees to work reduced hours and collect a percentage of regular UI benefits to compensate for lost pay. This week, 102 initial claim and 279 continued claims were processed. An estimated 30 layoffs were prevented this week, as a result of Workshare.

Exhaustions – 194 individuals exhausted their regular payments this week, an increase of 1 from the previous week and a decrease of 60 from a year ago.

Temporary Disability Insurance

Temporary Disability Insurance – 926 initial claims and 6,397 continued claims were processed for Temporary Disability Insurance. The average weekly TDI payment is \$468 per week. Rhode Island is currently paying an average of 10.6 weeks per new claim. To date there have been 21,487 TDI initial claims filed.

Temporary Caregiver Insurance – Of the 926 TDI initial claims, 138 (14.9%) were TCI Claims. This week 339 TCI payments were issued totaling \$172,217. The average weekly TCI payment was \$508. Of the 21,487 TDI claims filed in 2015, 2,890 or 13.4% were TCI claims.

	Initial Claims			Continued Claims	TOTAL - Initial and Continued Claims			
	Total	New	Additional		Current Week	Previous Week	Year Ago	Two Years Ago
Total - All programs*	942	597	345	8,531	9,473	9,320	10,788	12,063
UI Claims	818	487	331	7,887	8,705	8,678	10,192	10,877
Change from:								
Previous Week	35	19	16	-8	27			
Year Ago	-320	-241	-79	-1,167	-1,487			
Two Years Ago	-354	-266	-88	-1,818	-2,172			
Interstate-Liable	22	8	14	365	387	399	458	578
Workshare	102	102	0	279	381	243	138	608
Workshare Equivalency	30	30	0	60	90	63	37	146
UI Exhaustions	-	-	-	194	194	193	254	300
TDI Claims (Includes TCI)	926	729	197	6,397	7,323	8,860	8,348	7,550
Change from:								
Previous Week	-404	-299	-105	-1,133	-1,537			
Year Ago	-10	-25	15	-1,015	-1,025			

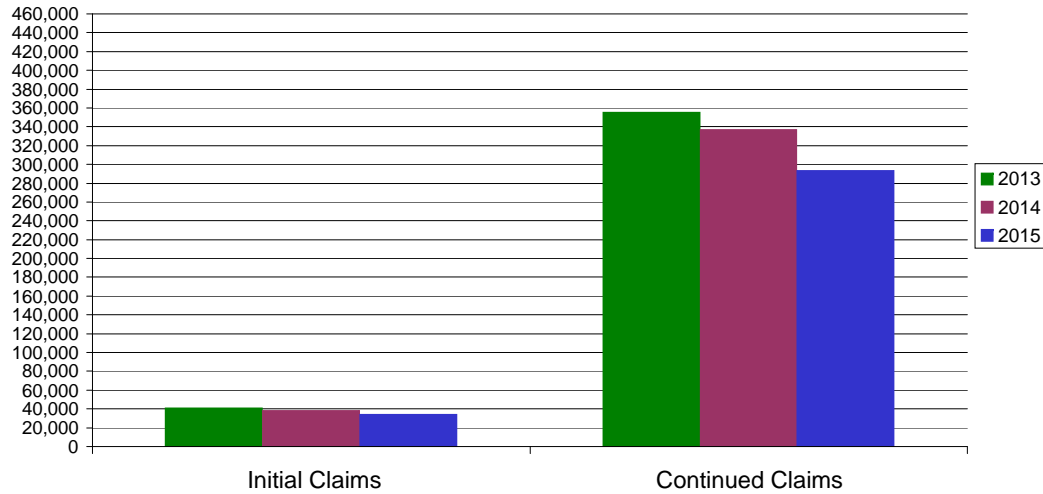
* Includes UI, EUC08, Workshare & Interstate Liable.

Equal Opportunity Employer / Program / Auxiliary aids and services available upon request to individuals with disabilities / TTY via RI Relay 711.

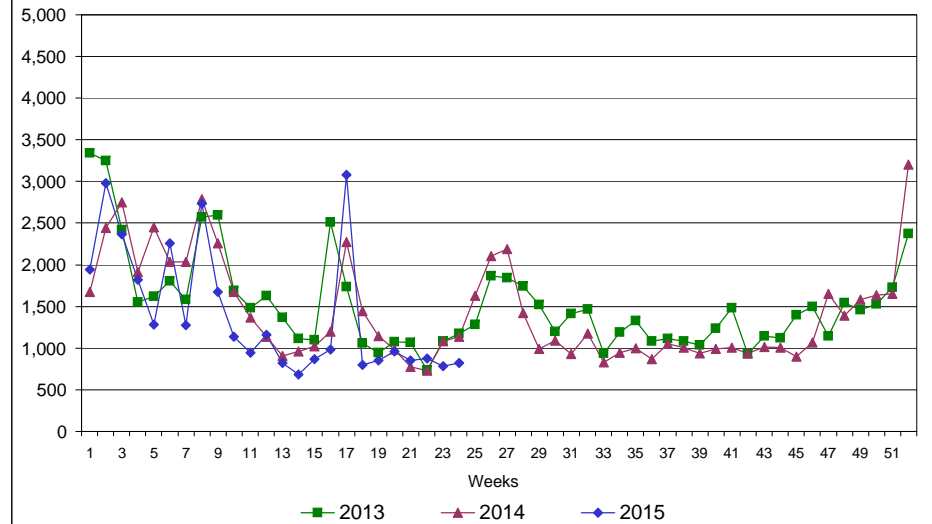
Rhode Island Department of Labor and Training

June 13, 2015

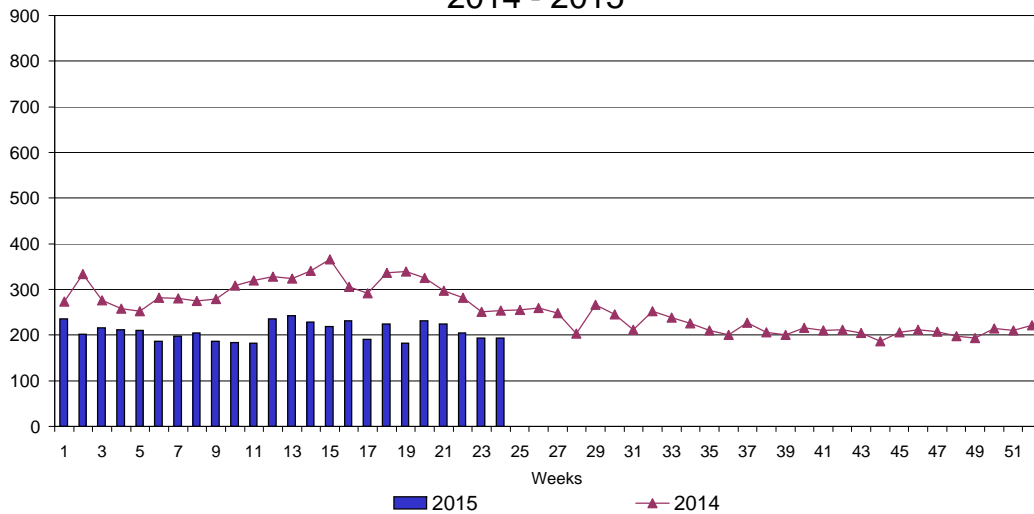
UI Claims Comparison Year to Date



UI Initial Claims 2013 - 2015



UI Exhaustions 2014 - 2015



TDI Claims Comparison Year to Date

