



Rhode Island Department of Labor and Training

Weekly Update of Claims Activity

Week Ending: June 20, 2015

Unemployment Insurance

Initial Claims – 1,314 initial claims were processed during the week ending 6/20/15, an increase of 496 from the previous week, and a decrease of 315 from a year ago. The number of initial claims filed to date is down 11.4 percent from last year and down 15.6 percent from two years ago.

Continued Claims – 7,760 continued claims were processed during the week of 6/20/15, a decrease of 127 from the previous week and a decrease of 1,290 from a year ago. The number of continued claims filed to date is down 13.0 percent from last year and down 17.5 percent from two years ago.

Workshare – gives employers an alternative to layoffs by allowing employees to work reduced hours and collect a percentage of regular UI benefits to compensate for lost pay. This week, there were not any initial claims processed, 333 continued claims were processed.

Exhaustions – 194 individuals exhausted their regular payments this week, no change from the previous week and a decrease of 61 from a year ago.

Temporary Disability Insurance

Temporary Disability Insurance – 739 initial claims and 7,879 continued claims were processed for Temporary Disability Insurance. The average weekly TDI payment is \$449 per week. Rhode Island is currently paying an average of 10.7 weeks per new claim. To date there have been 22,226 TDI initial claims filed.

Temporary Caregiver Insurance – Of the 739 TDI initial claims, 174 (23.5%) were TCI Claims. This week 417 TCI payments were issued totaling \$209,257. The average weekly TCI payment was \$502. Of the 22,226 TDI claims filed in 2015, 3,064 or 13.8% were TCI claims.

	Initial Claims			Continued Claims	TOTAL - Initial and Continued Claims			
	Total	New	Additional		Current Week	Previous Week	Year Ago	Two Years Ago
Total - All programs*	1,346	799	547	8,465	9,811	9,473	11,673	12,202
UI Claims	1,314	777	537	7,760	9,074	8,705	10,679	11,161
Change from:								
Previous Week	496	290	206	-127	369			
Year Ago	-315	-5	-310	-1,290	-1,605			
Two Years Ago	34	40	-6	-2,121	-2,087			
Interstate-Liable	32	22	10	372	404	387	454	518
Workshare	0	0	0	333	333	381	540	523
Workshare Equivalency	0	0	0	81	81	90	134	146
UI Exhaustions	-	-	-	194	194	194	255	288
TDI Claims (Includes TCI)	739	585	154	7,879	8,618	7,323	8,538	7,792
Change from:								
Previous Week	-187	-144	-43	1,482	1,295			
Year Ago	-309	-253	-56	389	80			

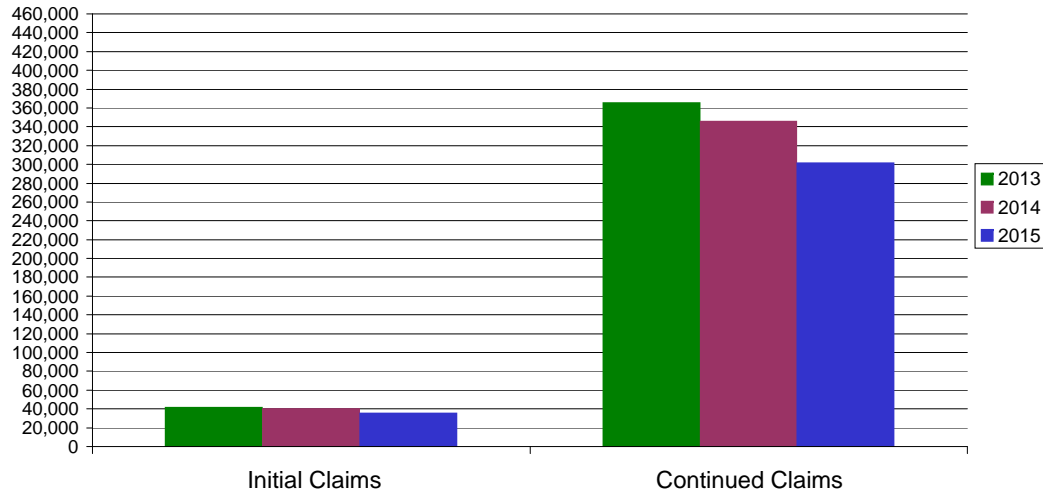
* Includes UI, EUC08, Workshare & Interstate Liable.

Equal Opportunity Employer / Program / Auxiliary aids and services available upon request to individuals with disabilities / TTY via RI Relay 711.

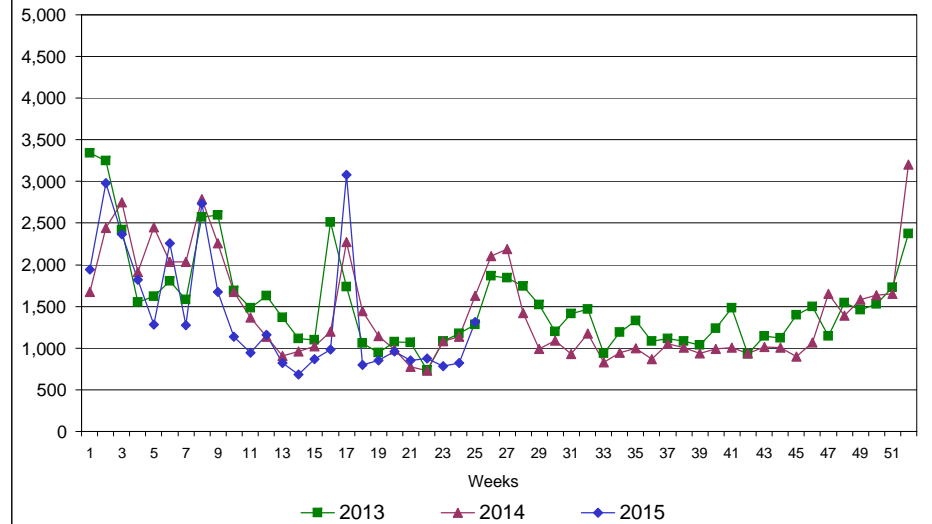
Rhode Island Department of Labor and Training

June 20, 2015

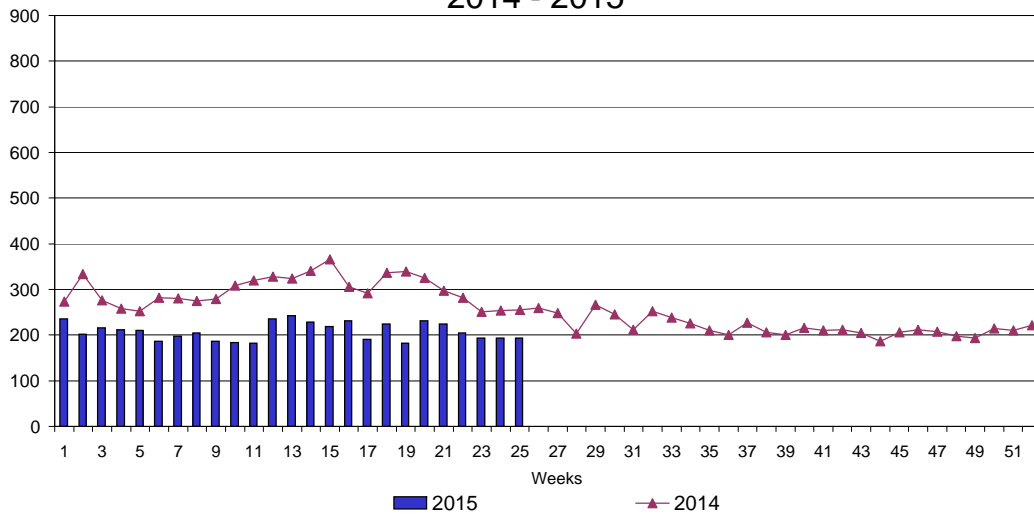
UI Claims Comparison Year to Date



UI Initial Claims 2013 - 2015



UI Exhaustions 2014 - 2015



TDI Claims Comparison Year to Date

