



## Rhode Island Department of Labor and Training

# *Weekly Update of Claims Activity*

*Week Ending: June 27, 2015*

### ***Unemployment Insurance***

**Initial Claims** – 1,850 initial claims were processed during the week ending 6/27/15, an increase of 536 from the previous week, and a decrease of 251 from a year ago. The number of initial claims filed to date is down 11.5 percent from last year and down 15.0 percent from two years ago.

**Continued Claims** – 7,986 continued claims were processed during the week of 6/27/15, an increase of 226 from the previous week and a decrease of 1,395 from a year ago. The number of continued claims filed to date is down 13.0 percent from last year and down 17.6 percent from two years ago.

**Workshare** – gives employers an alternative to layoffs by allowing employees to work reduced hours and collect a percentage of regular UI benefits to compensate for lost pay. This week, 3 initial claims and 270 continued claims were processed.

**Exhaustions** – 204 individuals exhausted their regular payments this week, an increase of 10 from the previous week and a decrease of 55 from a year ago.

### ***Temporary Disability Insurance***

**Temporary Disability Insurance** – 1,312 initial claims and 7,629 continued claims were processed for Temporary Disability Insurance. The average weekly TDI payment is \$464 per week. Rhode Island is currently paying an average of 10.6 weeks per new claim. To date there have been 23,538 TDI initial claims filed.

**Temporary Caregiver Insurance** – Of the 1,312 TDI initial claims, 159 (12.1%) were TCI Claims. This week 388 TCI payments were issued totaling \$207,989. The average weekly TCI payment was \$536. Of the 23,538 TDI claims filed in 2015, 3,223 or 13.7% were TCI claims.

	<b>Initial Claims</b>			<b>Continued Claims</b>	<b>TOTAL - Initial and Continued Claims</b>			
	<b>Total</b>	<b>New</b>	<b>Additional</b>		<b>Current Week</b>	<b>Previous Week</b>	<b>Year Ago</b>	<b>Two Years Ago</b>
<b>Total - All programs*</b>	1,875	830	1,045	8,623	10,498	9,811	12,053	13,099
<b>UI Claims</b>	1,850	815	1,035	7,986	9,836	9,074	11,482	11,933
Change from:								
Previous Week	536	38	498	226	762			
Year Ago	-251	-76	-175	-1,395	-1,646			
Two Years Ago	-20	-40	20	-2,077	-2,097			
<b>Interstate-Liable</b>	22	15	7	367	389	404	443	532
<b>Workshare</b>	3	0	3	270	273	333	128	634
<b>Workshare Equivalency</b>	1	0	1	55	56	81	36	156
<b>UI Exhaustions</b>	-	-	-	204	204	194	259	284
<b>TDI Claims (Includes TCI)</b>	1,312	1,058	254	7,629	8,941	8,618	8,339	7,462
Change from:								
Previous Week	573	473	100	-250	323			
Year Ago	408	312	96	194	602			

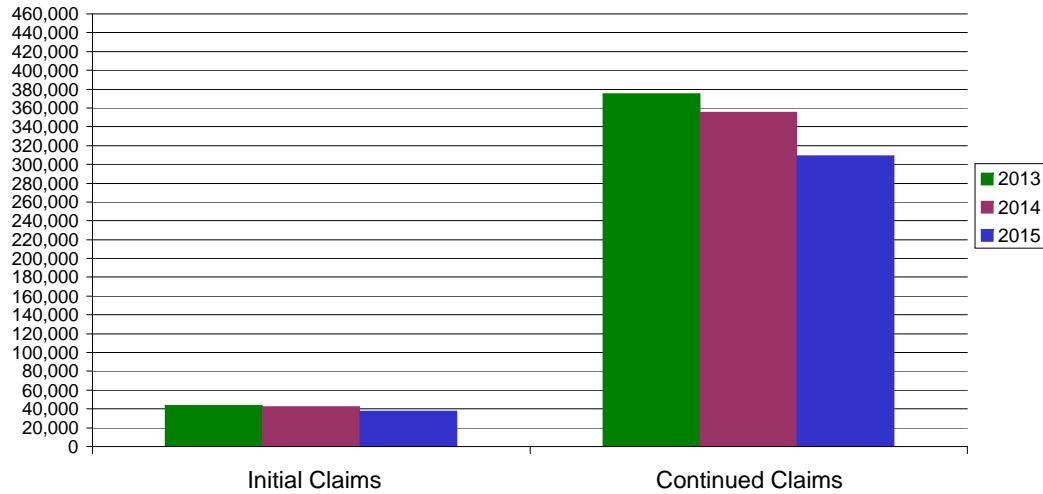
\* Includes UI, EUC08, Workshare & Interstate Liable.

Equal Opportunity Employer / Program / Auxiliary aids and services available upon request to individuals with disabilities / TTY via RI Relay 711.

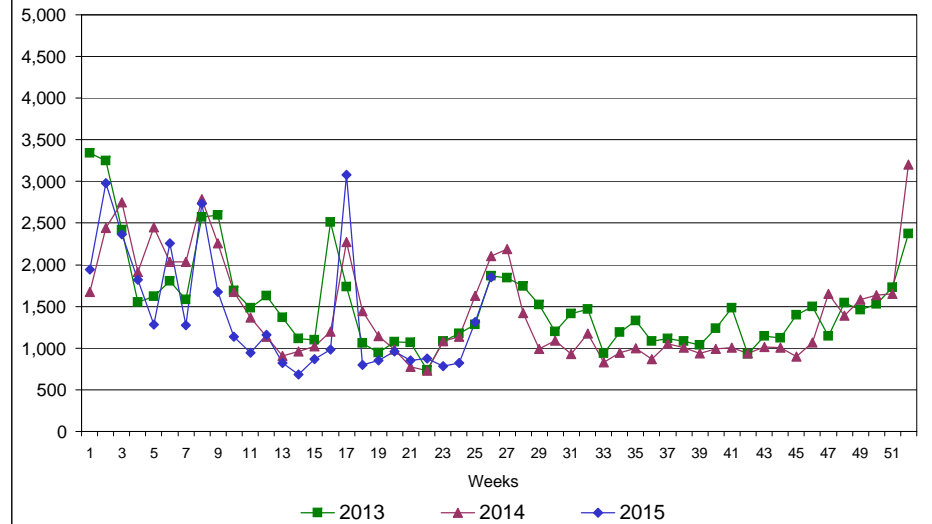
# Rhode Island Department of Labor and Training

## June 27, 2015

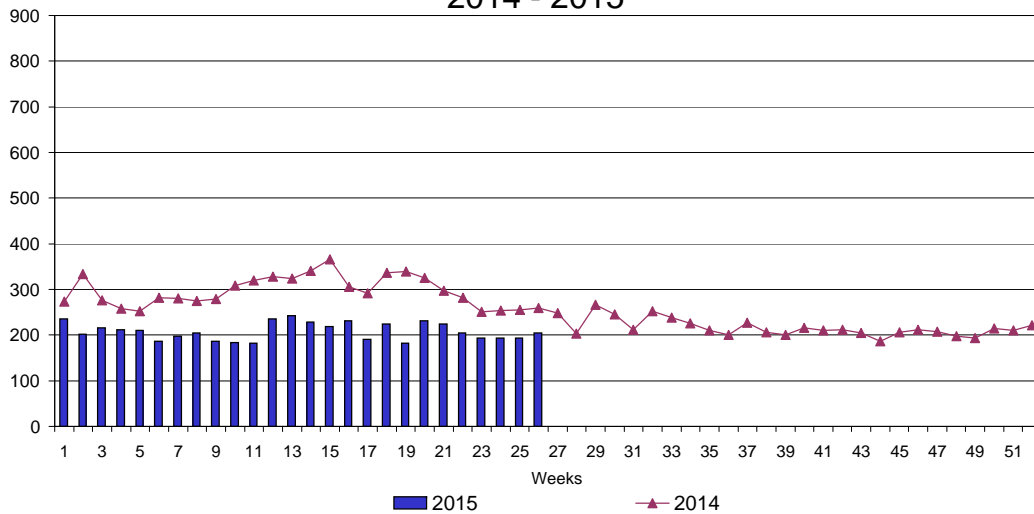
### UI Claims Comparison Year to Date



### UI Initial Claims 2013 - 2015



### UI Exhaustions 2014 - 2015



### TDI Claims Comparison Year to Date

