



Rhode Island Department of Labor and Training

Weekly Update of Claims Activity

Week Ending: July 4, 2015

Unemployment Insurance

Initial Claims – 2,188 initial claims were processed during the week ending 7/4/15, an increase of 338 from the previous week, and a decrease of 4 from a year ago. The number of initial claims filed to date is down 10.9 percent from last year and down 13.6 percent from two years ago.

Continued Claims – 9,024 continued claims were processed during the week of 7/4/15, an increase of 1,038 from the previous week and a decrease of 1,895 from a year ago. The number of continued claims filed to date is down 13.1 percent from last year and down 17.6 percent from two years ago.

Workshare – gives employers an alternative to layoffs by allowing employees to work reduced hours and collect a percentage of regular UI benefits to compensate for lost pay. This week, 15 initial claims and 494 continued claims were processed. An estimated 5 layoffs were prevented this week, as a result of Workshare.

Exhaustions – 196 individuals exhausted their regular payments this week, a decrease of 8 from the previous week and a decrease of 52 from a year ago.

Temporary Disability Insurance

Temporary Disability Insurance – 688 initial claims and 7,615 continued claims were processed for Temporary Disability Insurance. The average weekly TDI payment is \$454 per week. Rhode Island is currently paying an average of 10.6 weeks per new claim. To date there have been 24,226 TDI initial claims filed.

Temporary Caregiver Insurance – Of the 688 TDI initial claims, 114 (16.6%) were TCI Claims. This week 306 TCI payments were issued totaling \$154,804. The average weekly TCI payment was \$506. Of the 24,226 TDI claims filed in 2015, 3,337 or 13.8% were TCI claims.

	Initial Claims			Continued Claims	TOTAL - Initial and Continued Claims			
	Total	New	Additional		Current Week	Previous Week	Year Ago	Two Years Ago
Total - All programs*	2,235	1,097	1,138	9,884	12,119	10,498	13,927	13,499
UI Claims	2,188	1,074	1,114	9,024	11,212	9,836	13,111	12,677
Change from:								
Previous Week	338	259	79	1,038	1,376			
Year Ago	-4	-128	124	-1,895	-1,899			
Two Years Ago	347	164	183	-1,812	-1,465			
Interstate-Liable	32	16	16	366	398	389	460	504
Workshare	15	7	8	494	509	273	356	318
Workshare Equivalency	5	3	2	131	136	56	91	87
UI Exhaustions	-	-	-	196	196	204	248	261
TDI Claims (Includes TCI)	688	515	173	7,615	8,303	8,941	8,123	7,522
Change from:								
Previous Week	-624	-543	-81	-14	-638			
Year Ago	61	37	24	119	180			

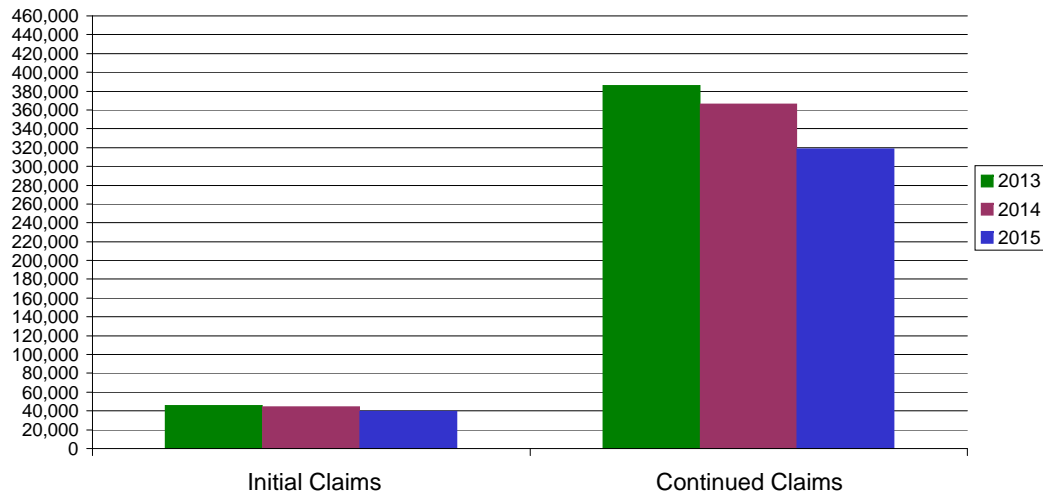
* Includes UI, EUC08, Workshare & Interstate Liable.

Equal Opportunity Employer / Program / Auxiliary aids and services available upon request to individuals with disabilities / TTY via RI Relay 711.

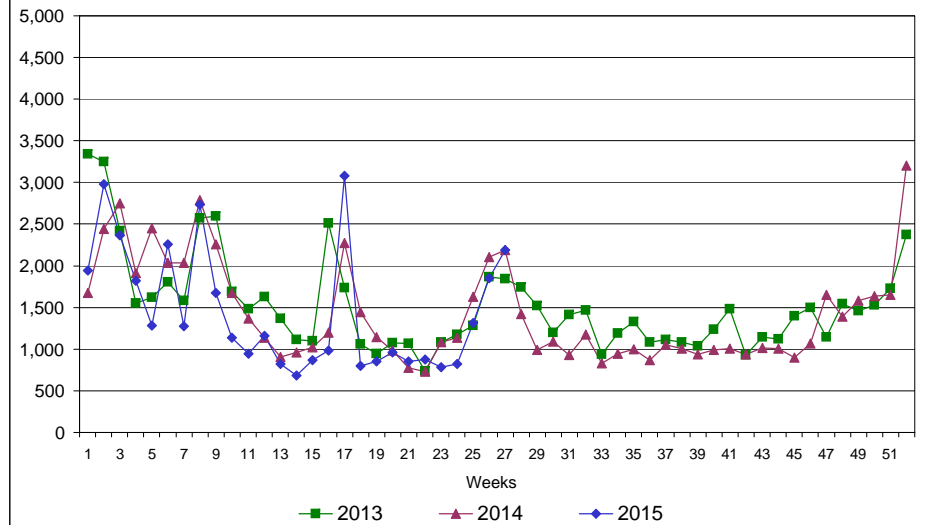
Rhode Island Department of Labor and Training

July 4, 2015

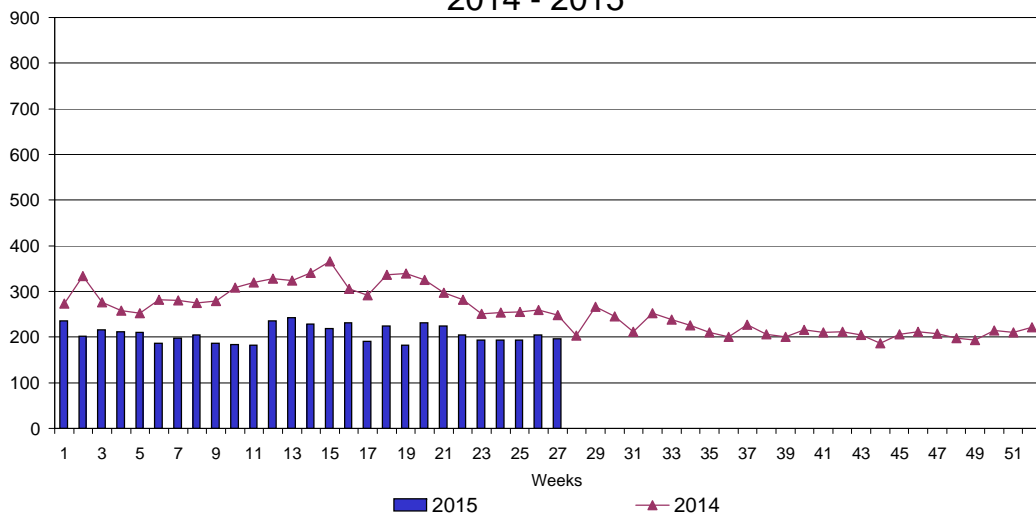
UI Claims Comparison Year to Date



UI Initial Claims 2013 - 2015



UI Exhaustions 2014 - 2015



TDI Claims Comparison Year to Date

