



Rhode Island Department of Labor and Training

Weekly Update of Claims Activity

Week Ending: July 11, 2015

Unemployment Insurance

Initial Claims – 961 initial claims were processed during the week ending 7/11/15, a decrease of 1,227 from the previous week, and a decrease of 462 from a year ago. The number of initial claims filed to date is down 11.6 percent from last year and down 14.8 percent from two years ago.

Continued Claims – 9,949 continued claims were processed during the week of 7/11/15, an increase of 925 from the previous week and a decrease of 1,736 from a year ago. The number of continued claims filed to date is down 13.2 percent from last year and down 17.6 percent from two years ago.

Workshare – gives employers an alternative to layoffs by allowing employees to work reduced hours and collect a percentage of regular UI benefits to compensate for lost pay. This week, 5 initial claims and 238 continued claims were processed.

Exhaustions – 165 individuals exhausted their regular payments this week, a decrease of 31 from the previous week and a decrease of 38 from a year ago.

Temporary Disability Insurance

Temporary Disability Insurance – 931 initial claims and 5,986 continued claims were processed for Temporary Disability Insurance. The average weekly TDI payment is \$463 per week. Rhode Island is currently paying an average of 10.5 weeks per new claim. To date there have been 25,157 TDI initial claims filed.

Temporary Caregiver Insurance – Of the 931 TDI initial claims, 122 (13.1%) were TCI Claims. This week 261 TCI payments were issued totaling \$134,473. The average weekly TCI payment was \$515. Of the 25,157 TDI claims filed in 2015, 3,459 or 13.7% were TCI claims.

	Initial Claims			Continued Claims	TOTAL - Initial and Continued Claims			
	Total	New	Additional		Current Week	Previous Week	Year Ago	Two Years Ago
Total - All programs*	990	556	434	10,546	11,536	12,119	13,889	14,914
UI Claims	961	541	420	9,949	10,910	11,212	13,108	13,999
Change from:								
Previous Week	-1,227	-533	-694	925	-302			
Year Ago	-462	-393	-69	-1,736	-2,198			
Two Years Ago	-779	-401	-378	-2,310	-3,089			
Interstate-Liable	24	14	10	359	383	398	474	544
Workshare	5	1	4	238	243	509	307	371
Workshare Equivalency	1	0	1	51	52	136	79	91
UI Exhaustions	-	-	-	165	165	196	203	312
TDI Claims (Includes TCI)	931	754	177	5,986	6,917	8,303	8,070	8,008
Change from:								
Previous Week	243	239	4	-1,629	-1,386			
Year Ago	45	63	-18	-1,198	-1,153			

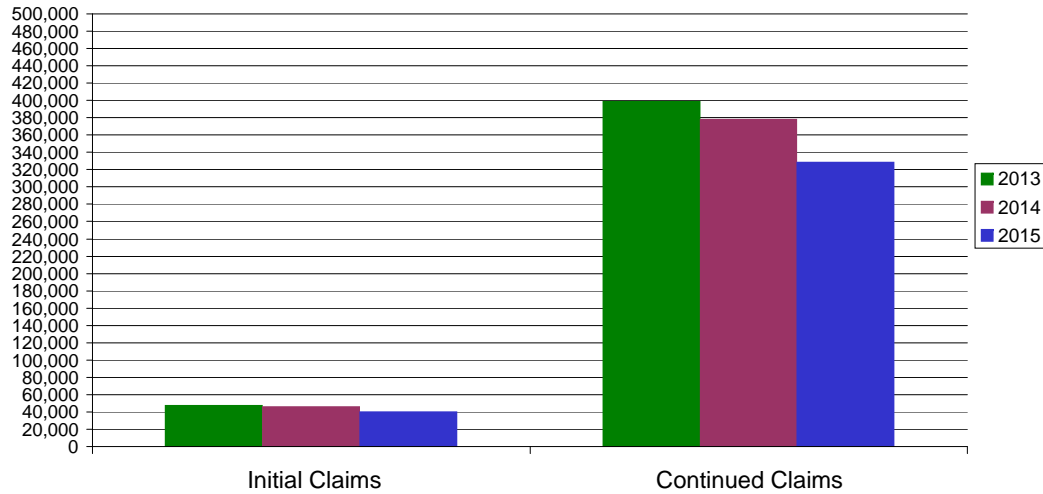
* Includes UI, EUC08, Workshare & Interstate Liable.

Equal Opportunity Employer / Program / Auxiliary aids and services available upon request to individuals with disabilities / TTY via RI Relay 711.

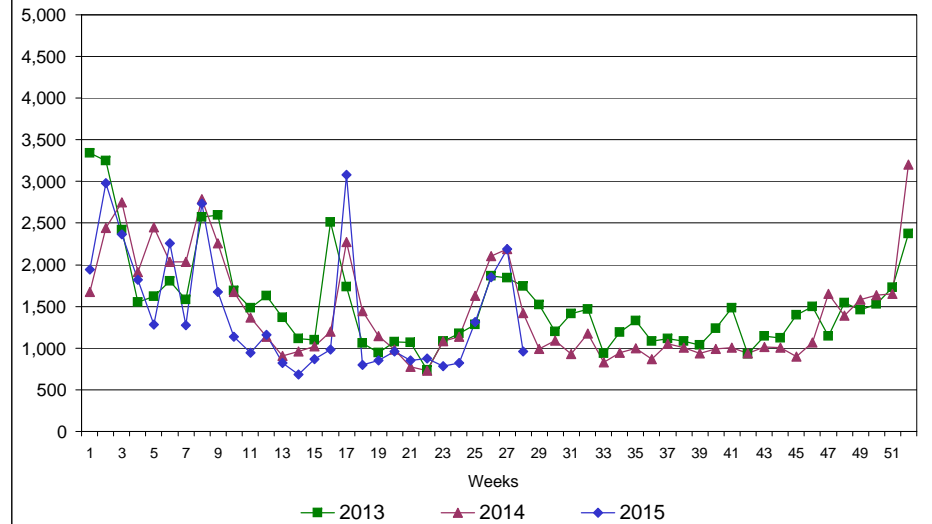
Rhode Island Department of Labor and Training

July 11, 2015

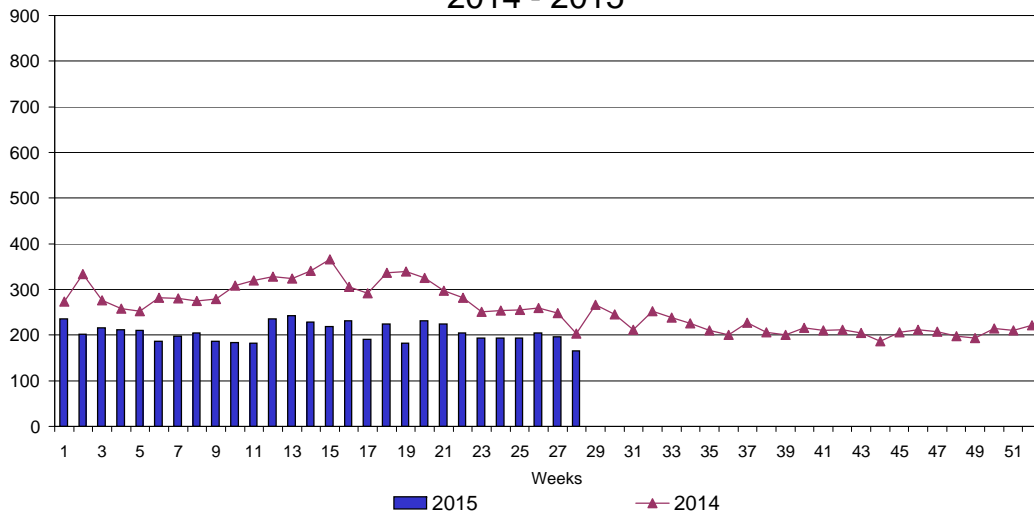
UI Claims Comparison Year to Date



UI Initial Claims 2013 - 2015



UI Exhaustions 2014 - 2015



TDI Claims Comparison Year to Date

