



Rhode Island Department of Labor and Training

Weekly Update of Claims Activity

Week Ending: July 18 2015

Unemployment Insurance

Initial Claims – 1,342 initial claims were processed during the week ending 7/18/15, an increase of 381 from the previous week, and an increase of 354 from a year ago. The number of initial claims filed to date is down 10.6 percent from last year and down 14.7 percent from two years ago.

Continued Claims – 10,067 continued claims were processed during the week of 7/18/15, an increase of 118 from the previous week and a decrease of 1,506 from a year ago. The number of continued claims filed to date is down 13.2 percent from last year and down 17.6 percent from two years ago.

Workshare – gives employers an alternative to layoffs by allowing employees to work reduced hours and collect a percentage of regular UI benefits to compensate for lost pay. This week, 12 initial claims and 142 continued claims were processed. An estimated 3 layoffs were prevented this week, as a result of Workshare.

Exhaustions – 202 individuals exhausted their regular payments this week, an increase of 37 from the previous week and a decrease of 65 from a year ago.

Temporary Disability Insurance

Temporary Disability Insurance – 1,048 initial claims and 6,936 continued claims were processed for Temporary Disability Insurance. The average weekly TDI payment is \$459 per week. Rhode Island is currently paying an average of 10.5 weeks per new claim. To date there have been 26,205 TDI initial claims filed.

Temporary Caregiver Insurance – Of the 1,048 TDI initial claims, 151 (14.4%) were TCI Claims. This week 249 TCI payments were issued totaling \$131,579. The average weekly TCI payment was \$528. Of the 26,205 TDI claims filed in 2015, 3,610 or 13.8% were TCI claims.

	Initial Claims			Continued Claims	TOTAL - Initial and Continued Claims			
	Total	New	Additional		Current Week	Previous Week	Year Ago	Two Years Ago
Total - All programs*	1,374	939	435	10,554	11,928	11,536	13,327	14,648
UI Claims	1,342	917	425	10,067	11,409	10,910	12,561	13,552
Change from:								
Previous Week	381	376	5	118	499			
Year Ago	354	341	13	-1,506	-1,152			
Two Years Ago	-182	24	-206	-1,961	-2,143			
Interstate-Liable	20	10	10	345	365	383	484	541
Workshare	12	12	0	142	154	243	282	555
Workshare Equivalency	3	3	0	36	39	52	85	144
UI Exhaustions	-	-	-	202	202	165	267	306
TDI Claims (Includes TCI)	1,048	791	257	6,936	7,984	6,917	8,621	7,213
Change from:								
Previous Week	117	37	80	950	1,067			
Year Ago	-51	-89	38	-586	-637			

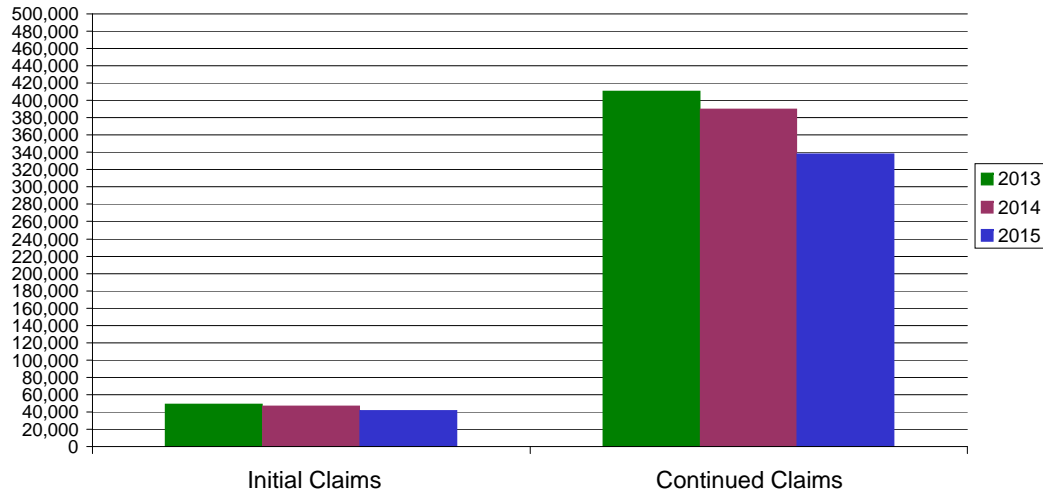
* Includes UI, EUC08, Workshare & Interstate Liable.

Equal Opportunity Employer / Program / Auxiliary aids and services available upon request to individuals with disabilities / TTY via RI Relay 711.

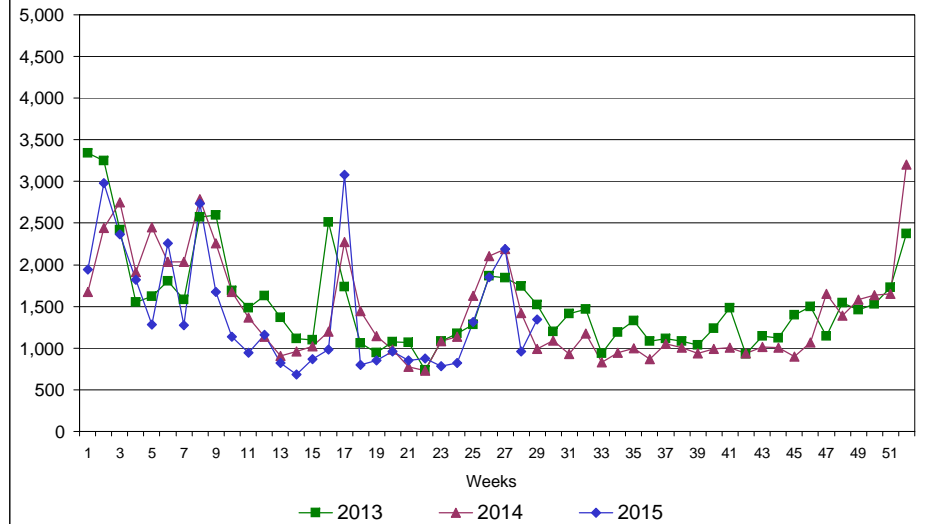
Rhode Island Department of Labor and Training

July 18, 2015

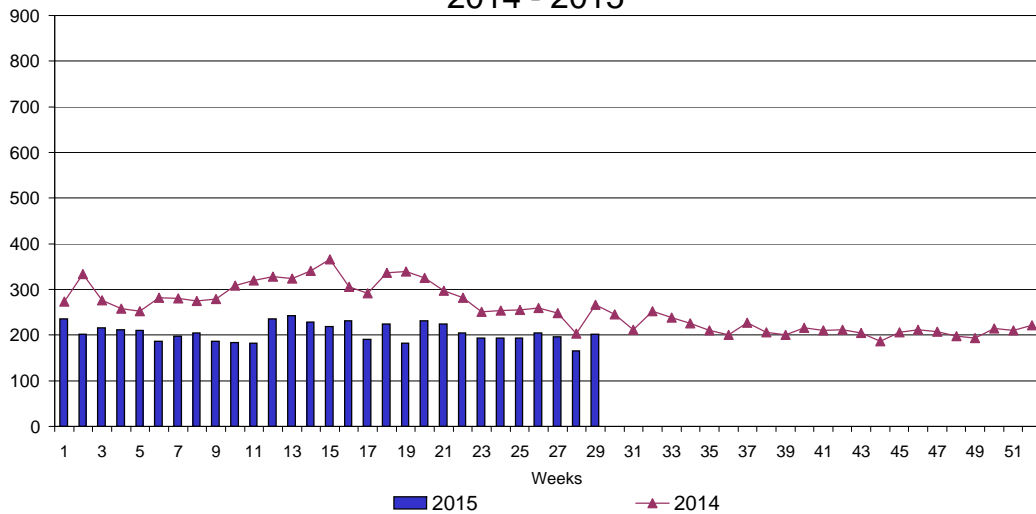
UI Claims Comparison Year to Date



UI Initial Claims 2013 - 2015



UI Exhaustions 2014 - 2015



TDI Claims Comparison Year to Date

