



## Rhode Island Department of Labor and Training

# *Weekly Update of Claims Activity*

*Week Ending: July 25, 2015*

### ***Unemployment Insurance***

**Initial Claims** – 755 initial claims were processed during the week ending 7/25/15, a decrease of 587 from the previous week, and a decrease of 338 from a year ago. The number of initial claims filed to date is down 11.0 percent from last year and down 15.2 percent from two years ago.

**Continued Claims** – 10,114 continued claims were processed during the week of 7/25/15, an increase of 47 from the previous week and a decrease of 1,182 from a year ago. The number of continued claims filed to date is down 13.1 percent from last year and down 17.5 percent from two years ago.

**Workshare** – gives employers an alternative to layoffs by allowing employees to work reduced hours and collect a percentage of regular UI benefits to compensate for lost pay. This week, 29 initial claims and 306 continued claims were processed. An estimated 9 layoffs were prevented this week, as a result of Workshare.

**Exhaustions** – 188 individuals exhausted their regular payments this week, a decrease of 14 from the previous week and a decrease of 57 from a year ago.

### ***Temporary Disability Insurance***

**Temporary Disability Insurance** – 1,188 initial claims and 7,168 continued claims were processed for Temporary Disability Insurance. The average weekly TDI payment is \$457 per week. Rhode Island is currently paying an average of 10.5 weeks per new claim. To date there have been 27,393 TDI initial claims filed.

**Temporary Caregiver Insurance** – Of the 1,188 TDI initial claims, 164 (13.8%) were TCI Claims. This week 317 TCI payments were issued totaling \$161,236. The average weekly TCI payment was \$509. Of the 27,393 TDI claims filed in 2015, 3,774 or 13.8% were TCI claims.

	<b>Initial Claims</b>			<b>Continued Claims</b>	<b>TOTAL - Initial and Continued Claims</b>			
	<b>Total</b>	<b>New</b>	<b>Additional</b>		<b>Current Week</b>	<b>Previous Week</b>	<b>Year Ago</b>	<b>Two Years Ago</b>
<b>Total - All programs*</b>	804	542	262	10,766	11,570	11,928	13,123	14,320
<b>UI Claims</b>	755	501	254	10,114	10,869	11,409	12,389	13,188
Change from:								
Previous Week	-587	-416	-171	47	-540			
Year Ago	-338	-218	-120	-1,182	-1,520			
Two Years Ago	-442	-260	-182	-1,877	-2,319			
<b>Interstate-Liable</b>	20	15	5	346	366	365	520	515
<b>Workshare</b>	29	26	3	306	335	154	214	617
<b>Workshare Equivalency</b>	9	8	1	82	91	39	62	139
<b>UI Exhaustions</b>	-	-	-	188	188	202	245	256
<b>TDI Claims (Includes TCI)</b>	1,188	915	273	7,168	8,356	7,984	8,793	8,020
Change from:								
Previous Week	140	124	16	232	372			
Year Ago	151	75	76	-588	-437			

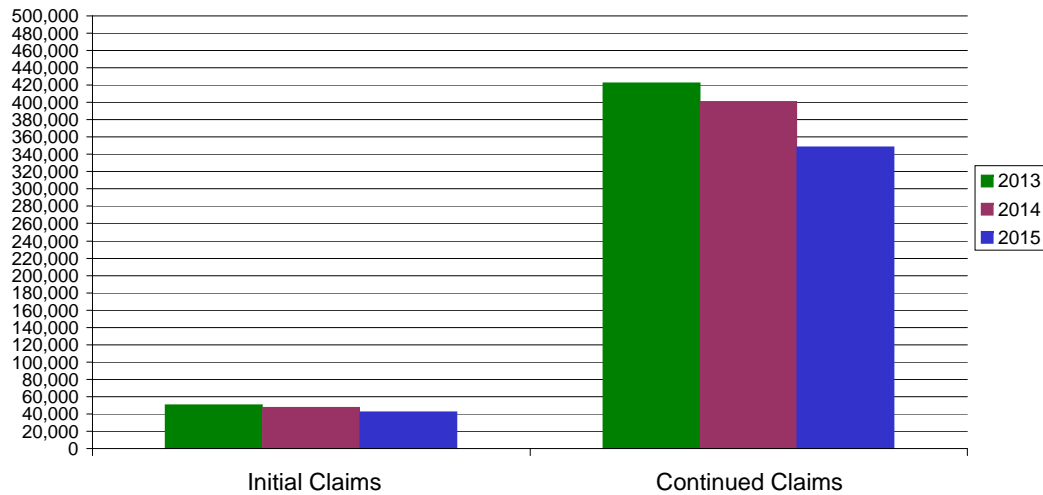
\* Includes UI, EUC08, Workshare & Interstate Liable.

Equal Opportunity Employer / Program / Auxiliary aids and services available upon request to individuals with disabilities / TTY via RI Relay 711.

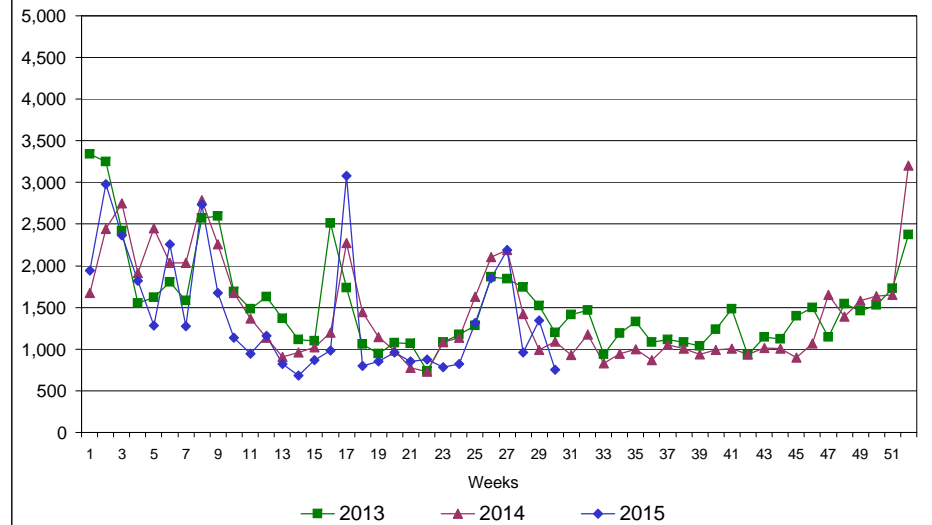
# Rhode Island Department of Labor and Training

## July 25, 2015

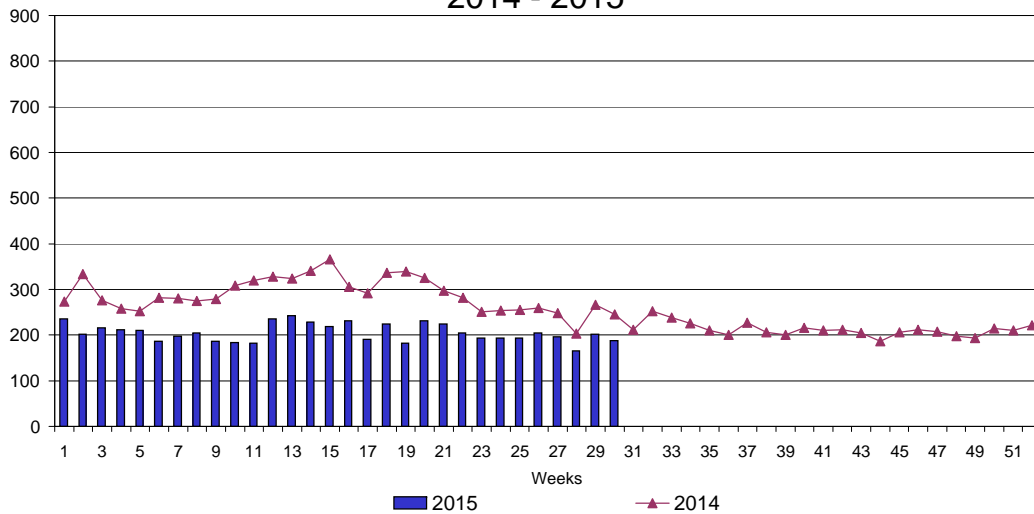
### UI Claims Comparison Year to Date



### UI Initial Claims 2013 - 2015



### UI Exhaustions 2014 - 2015



### TDI Claims Comparison Year to Date

