



## Rhode Island Department of Labor and Training

# *Weekly Update of Claims Activity*

*Week Ending: August 1, 2015*

### *Unemployment Insurance*

**Initial Claims** – 950 initial claims were processed during the week ending 8/1/15, an increase of 195 from the previous week, and an increase of 23 from a year ago. The number of initial claims filed to date is down 10.8 percent from last year and down 15.7 percent from two years ago.

**Continued Claims** – 9,939 continued claims were processed during the week of 8/1/15, a decrease of 175 from the previous week and a decrease of 1,183 from a year ago. The number of continued claims filed to date is down 13.0 percent from last year and down 17.6 percent from two years ago.

**Workshare** – gives employers an alternative to layoffs by allowing employees to work reduced hours and collect a percentage of regular UI benefits to compensate for lost pay. This week, 18 initial claims and 366 continued claims were processed. An estimated 6 layoffs were prevented this week, as a result of Workshare.

**Exhaustions** – 146 individuals exhausted their regular payments this week, a decrease of 42 from the previous week and a decrease of 66 from a year ago.

### *Temporary Disability Insurance*

**Temporary Disability Insurance** – 803 initial claims and 7,334 continued claims were processed for Temporary Disability Insurance. The average weekly TDI payment is \$454 per week. Rhode Island is currently paying an average of 10.4 weeks per new claim. To date there have been 28,196 TDI initial claims filed.

**Temporary Caregiver Insurance** – Of the 803 TDI initial claims, 199 (24.8%) were TCI Claims. This week 405 TCI payments were issued totaling \$213,287. The average weekly TCI payment was \$527. Of the 28,196 TDI claims filed in 2015, 3,973 or 14.1% were TCI claims.

	Initial Claims			Continued Claims	TOTAL - Initial and Continued Claims			
	Total	New	Additional		Current Week	Previous Week	Year Ago	Two Years Ago
<b>Total - All programs*</b>	1,004	638	366	10,654	11,658	11,570	12,734	14,743
<b>UI Claims</b>	950	596	354	9,939	10,889	10,869	12,049	13,773
Change from:								
Previous Week	195	95	100	-175	20			
Year Ago	23	9	14	-1,183	-1,160			
Two Years Ago	-466	-371	-95	-2,418	-2,884			
<b>Interstate-Liable</b>	36	24	12	349	385	366	497	551
<b>Workshare</b>	18	18	0	366	384	335	188	419
<b>Workshare Equivalency</b>	6	6	0	94	100	91	49	94
<b>UI Exhaustions</b>	-	-	-	146	146	188	212	288
<b>TDI Claims (Includes TCI)</b>	803	624	179	7,334	8,137	8,356	8,834	8,824
Change from:								
Previous Week	-385	-291	-94	166	-219			
Year Ago	256	207	49	-953	-697			

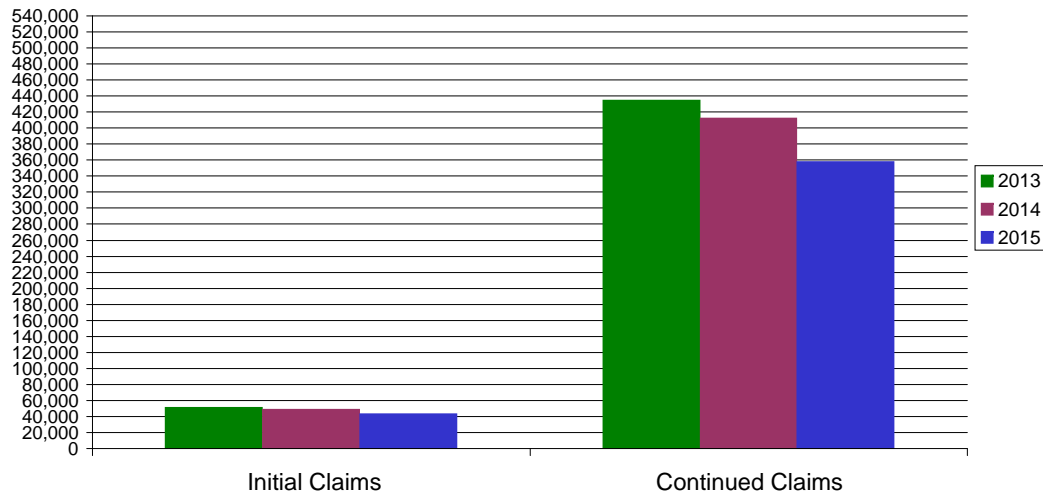
\* Includes UI, EUC08, Workshare & Interstate Liable.

Equal Opportunity Employer / Program / Auxiliary aids and services available upon request to individuals with disabilities / TTY via RI Relay 711.

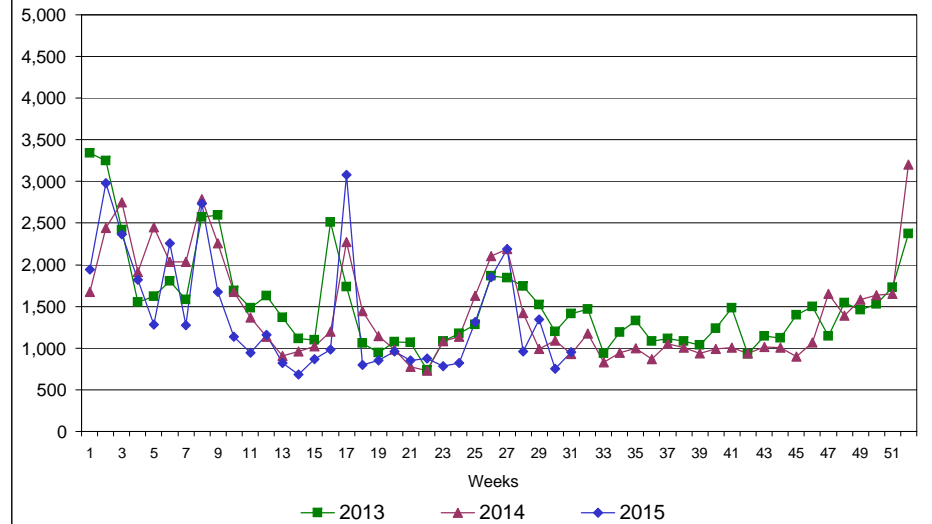
# Rhode Island Department of Labor and Training

## August 1, 2015

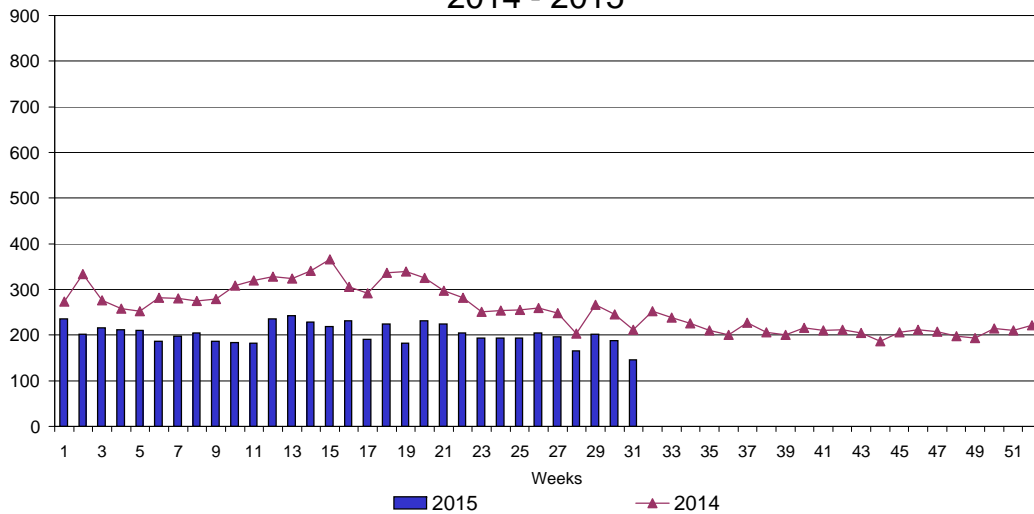
### UI Claims Comparison Year to Date



### UI Initial Claims 2013 - 2015



### UI Exhaustions 2014 - 2015



### TDI Claims Comparison Year to Date

