



Rhode Island Department of Labor and Training

Weekly Update of Claims Activity

Week Ending: August 8, 2015

Unemployment Insurance

Initial Claims – 903 initial claims were processed during the week ending 8/8/15, a decrease of 47 from the previous week, and a decrease of 274 from a year ago. The number of initial claims filed to date is down 11.1 percent from last year and down 16.3 percent from two years ago.

Continued Claims – 9,673 continued claims were processed during the week of 8/8/15, a decrease of 266 from the previous week and a decrease of 1,592 from a year ago. The number of continued claims filed to date is down 13.1 percent from last year and down 17.7 percent from two years ago.

Workshare – gives employers an alternative to layoffs by allowing employees to work reduced hours and collect a percentage of regular UI benefits to compensate for lost pay. This week, 2 initial claims and 163 continued claims were processed.

Exhaustions – 179 individuals exhausted their regular payments this week, an increase of 33 from the previous week and a decrease of 74 from a year ago.

Temporary Disability Insurance

Temporary Disability Insurance – 720 initial claims and 7,514 continued claims were processed for Temporary Disability Insurance. The average weekly TDI payment is \$466 per week. Rhode Island is currently paying an average of 10.4 weeks per new claim. To date there have been 28,916 TDI initial claims filed.

Temporary Caregiver Insurance – Of the 720 TDI initial claims, 157 (21.8%) were TCI Claims. This week 376 TCI payments were issued totaling \$192,483. The average weekly TCI payment was \$512. Of the 28,916 TDI claims filed in 2015, 4,130 or 14.3% were TCI claims.

	Initial Claims			Continued Claims	TOTAL - Initial and Continued Claims			
	Total	New	Additional		Current Week	Previous Week	Year Ago	Two Years Ago
Total - All programs*	925	536	389	10,190	11,115	11,658	13,413	14,476
UI Claims	903	520	383	9,673	10,576	10,889	12,442	13,793
Change from:								
Previous Week	-47	-76	29	-266	-313			
Year Ago	-274	-230	-44	-1,592	-1,866			
Two Years Ago	-561	-446	-115	-2,656	-3,217			
Interstate-Liable	20	14	6	354	374	385	493	610
Workshare	2	2	0	163	165	384	478	73
Workshare Equivalency	1	1	0	38	39	100	127	21
UI Exhaustions	-	-	-	179	179	146	253	280
TDI Claims (Includes TCI)	720	572	148	7,514	8,234	8,137	9,400	8,154
Change from:								
Previous Week	-83	-52	-31	180	97			
Year Ago	-252	-183	-69	-914	-1,166			

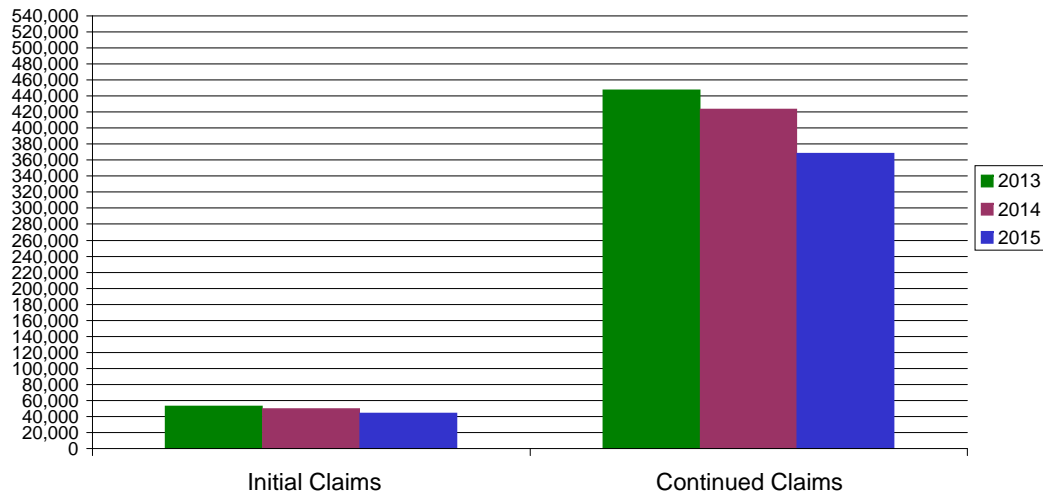
* Includes UI, EUC08, Workshare & Interstate Liable.

Equal Opportunity Employer / Program / Auxiliary aids and services available upon request to individuals with disabilities / TTY via RI Relay 711.

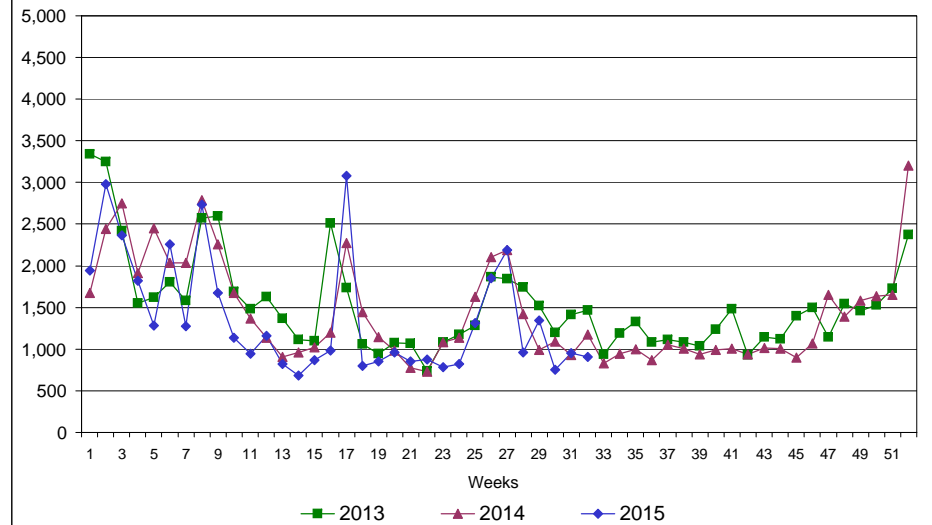
Rhode Island Department of Labor and Training

August 8, 2015

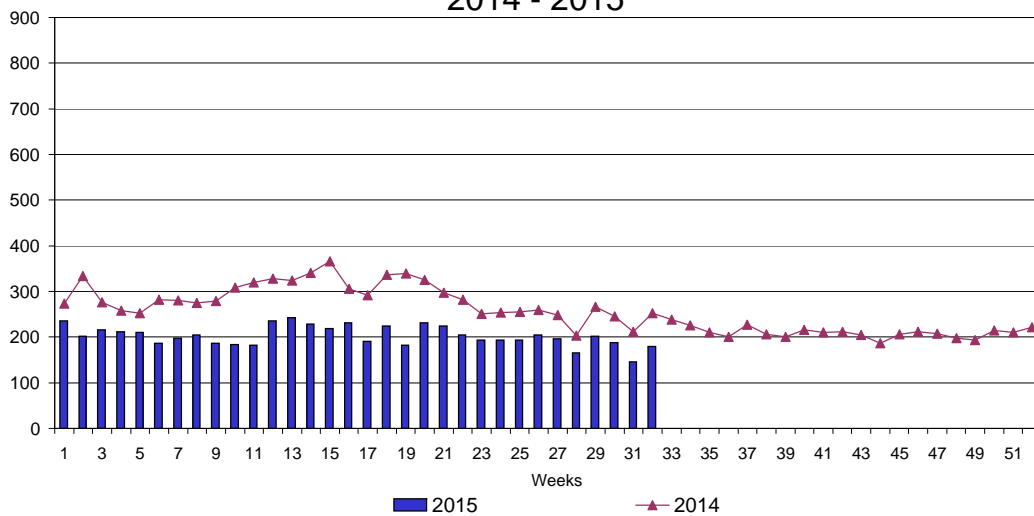
UI Claims Comparison Year to Date



UI Initial Claims 2013 - 2015



UI Exhaustions 2014 - 2015



TDI Claims Comparison Year to Date

