



Rhode Island Department of Labor and Training

Weekly Update of Claims Activity

Week Ending: August 15, 2015

Unemployment Insurance

Initial Claims – 982 initial claim s were processed during the week ending 8/15/15, an increase of 79 from the previous week, and an increase of 156 from a year ago. The number of initial claims filed to date is down 10.6 percent from last year and down 16.0 percent from two years ago.

Continued Claims – 9,570 continued claim s were processed during the week of 8/15/15, a decrease of 103 from the previous week and a decrease of 1,436 from a year ago. The number of continued claim s filed to date is down 13.1 percent from last year and down 17.8 percent from two years ago.

Workshare – gives employers an alternative to lay offs by allowing employees to work reduced hours and collect a percentage of regular UI benefits to compensate for lost pay. This week, 3 initial claim s and 447 continued claim s were processed.

Exhaustions – 166 individuals exhausted their regular payments this week, a decrease of 13 from the previous week and a decrease of 72 from a year ago.

Temporary Disability Insurance

Temporary Disability Insurance – 925 initial claim s and 7,815 continued claim s were processed for Temporary Disability Insurance. The average weekly TDI payment is \$456 per week. Rhode Island is currently paying an average of 10.4 weeks per new claim. To date there have been 29,841 TDI initial claims filed.

Temporary Caregiver Insurance – Of the 925 TDI initial claims, 169 (18.3%) were TCI Claim s. This week 325 TCI payments were issued totaling \$172,590. The average weekly TCI payment was \$531. Of the 29,841 TDI claims filed in 2015, 4,299 or 14.4% were TCI claims.

	Initial Claims			Continued Claims	TOTAL - Initial and Continued Claims			
	Total	New	Additional		Current Week	Previous Week	Year Ago	Two Years Ago
Total - All programs*	1,013	545	468	10,390	11,403	11,115	12,971	13,910
UI Claims	982	526	456	9,570	10,552	10,576	11,832	12,857
Change from:								
Previous Week	79	6	73	-103	-24			
Year Ago	156	65	91	-1,436	-1,280			
Two Years Ago	47	-36	83	-2,352	-2,305			
Interstate-Liable	28	18	10	373	401	374	482	551
Workshare	3	1	2	447	450	165	657	502
Workshare Equivalency	0	0	0	120	120	39	147	121
UI Exhaustions	-	-	-	166	166	179	238	280
TDI Claims (Includes TCI)	925	738	187	7,815	8,740	8,234	7,745	7,191
Change from:								
Previous Week	205	166	39	301	506			
Year Ago	57	71	-14	938	995			

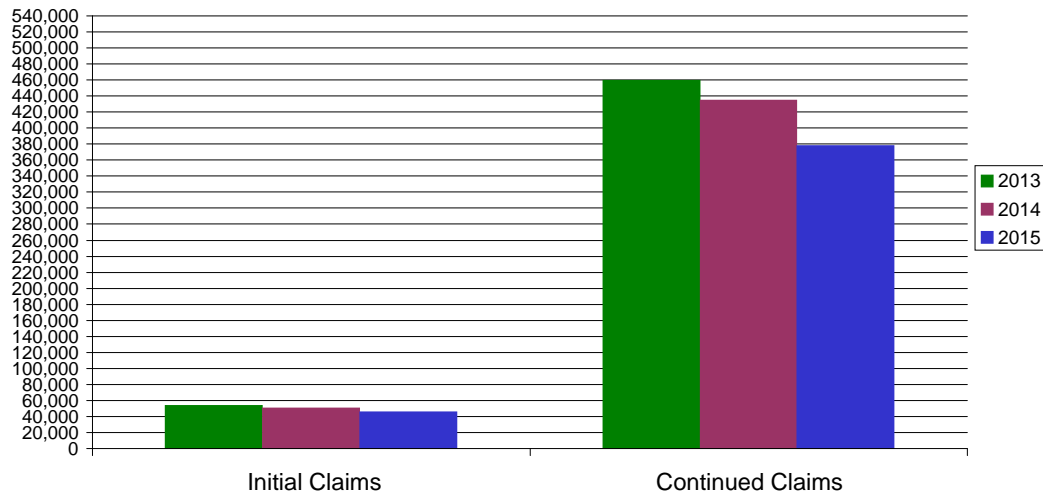
* Includes UI, Workshare & Interstate Liable.

Equal Opportunity Employer / Program / Auxiliary aids and services available upon request to individuals with disabilities / TTY via RI Relay 711.

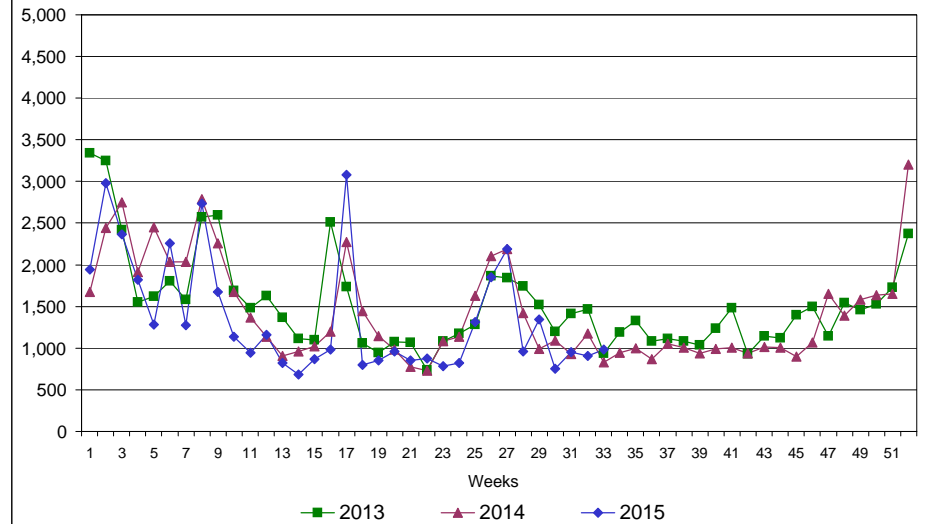
Rhode Island Department of Labor and Training

August 15, 2015

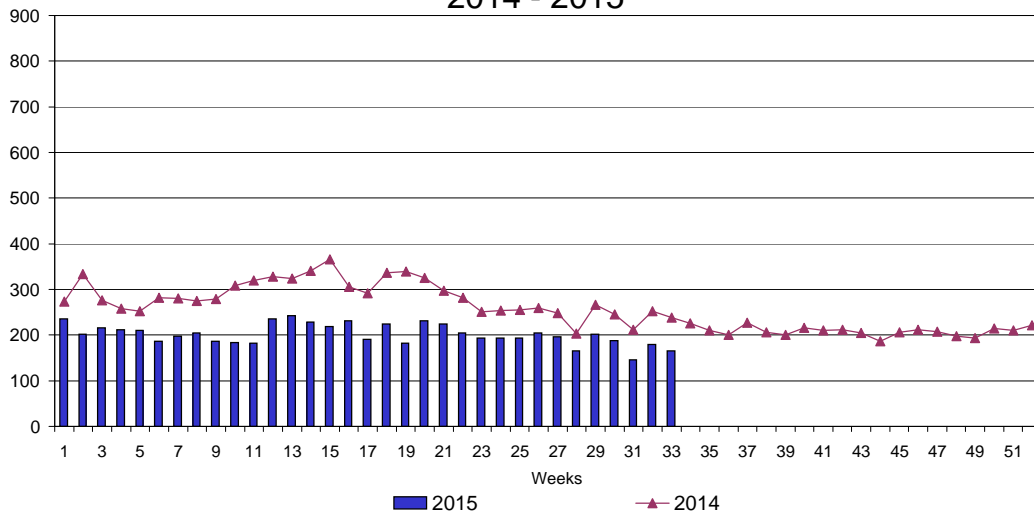
UI Claims Comparison Year to Date



UI Initial Claims 2013 - 2015



UI Exhaustions 2014 - 2015



TDI Claims Comparison Year to Date

