



Rhode Island Department of Labor and Training

Weekly Update of Claims Activity

Week Ending: August 22, 2015

Unemployment Insurance

Initial Claims – 993 initial claims were processed during the week ending 8/22/15, an increase of 11 from the previous week, and an increase of 47 from a year ago. The number of initial claims filed to date is down 10.3 percent from last year and down 16.0 percent from two years ago.

Continued Claims – 10,016 continued claims were processed during the week of 8/22/15, an increase of 446 from the previous week and a decrease of 1,124 from a year ago. The number of continued claims filed to date is down 13.0 percent from last year and down 17.8 percent from two years ago.

Workshare – gives employers an alternative to layoffs by allowing employees to work reduced hours and collect a percentage of regular UI benefits to compensate for lost pay. This week, 9 initial claims and 266 continued claims were processed. An estimated 3 layoffs were prevented this week, as a result of Workshare.

Exhaustions – 194 individuals exhausted their regular payments this week, an increase of 28 from the previous week and a decrease of 32 from a year ago.

Temporary Disability Insurance

Temporary Disability Insurance – 1,118 initial claims and 8,543 continued claims were processed for Temporary Disability Insurance. The average weekly TDI payment is \$462 per week. Rhode Island is currently paying an average of 10.5 weeks per new claim. To date there have been 30,959 TDI initial claims filed.

Temporary Caregiver Insurance – Of the 1,118 TDI initial claims, 177 (15.8%) were TCI Claims. This week 397 TCI payments were issued totaling \$205,381. The average weekly TCI payment was \$517. Of the 30,959 TDI claims filed in 2015, 4,476 or 14.5% were TCI claims.

| | Initial Claims | | | Continued Claims | TOTAL - Initial and Continued Claims | | | |
|----------------------------------|----------------|------|------------|------------------|--------------------------------------|---------------|----------|---------------|
| | Total | New | Additional | | Current Week | Previous Week | Year Ago | Two Years Ago |
| Total - All programs* | 1,043 | 604 | 439 | 10,660 | 11,703 | 11,403 | 13,063 | 14,956 |
| UI Claims | 993 | 564 | 429 | 10,016 | 11,009 | 10,552 | 12,086 | 13,583 |
| Change from: | | | | | | | | |
| Previous Week | 11 | 38 | -27 | 446 | 457 | | | |
| Year Ago | 47 | 11 | 36 | -1,124 | -1,077 | | | |
| Two Years Ago | -198 | -63 | -135 | -2,376 | -2,574 | | | |
| Interstate-Liable | 41 | 32 | 9 | 378 | 419 | 401 | 567 | 609 |
| Workshare | 9 | 8 | 1 | 266 | 275 | 450 | 410 | 764 |
| Workshare Equivalency | 3 | 3 | 0 | 62 | 65 | 120 | 95 | 178 |
| UI Exhaustions | - | - | - | 194 | 194 | 166 | 226 | 252 |
| TDI Claims (Includes TCI) | 1,118 | 864 | 254 | 8,543 | 9,661 | 8,740 | 8,930 | 8,687 |
| Change from: | | | | | | | | |
| Previous Week | 193 | 126 | 67 | 728 | 921 | | | |
| Year Ago | -185 | -167 | -18 | 916 | 731 | | | |

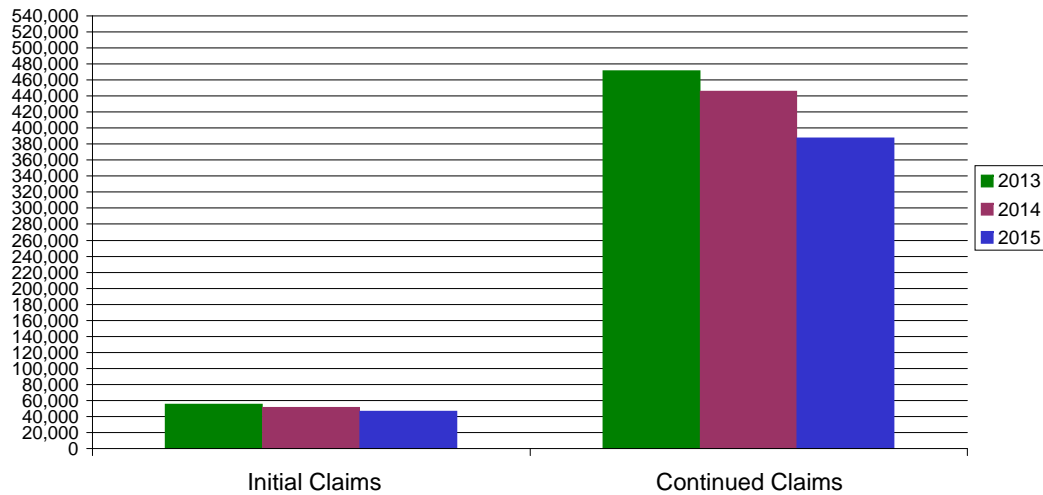
* Includes UI, Workshare & Interstate Liable.

Equal Opportunity Employer / Program / Auxiliary aids and services available upon request to individuals with disabilities / TTY via RI Relay 711.

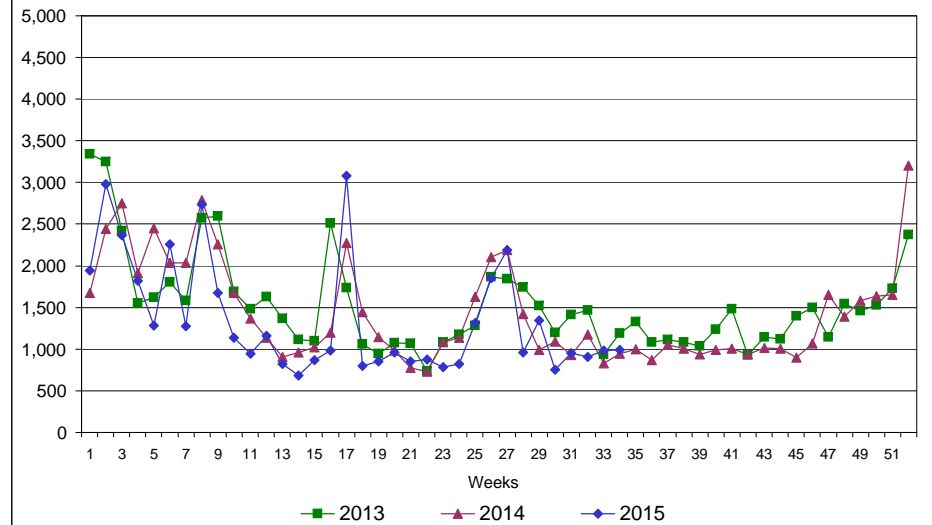
Rhode Island Department of Labor and Training

August 22, 2015

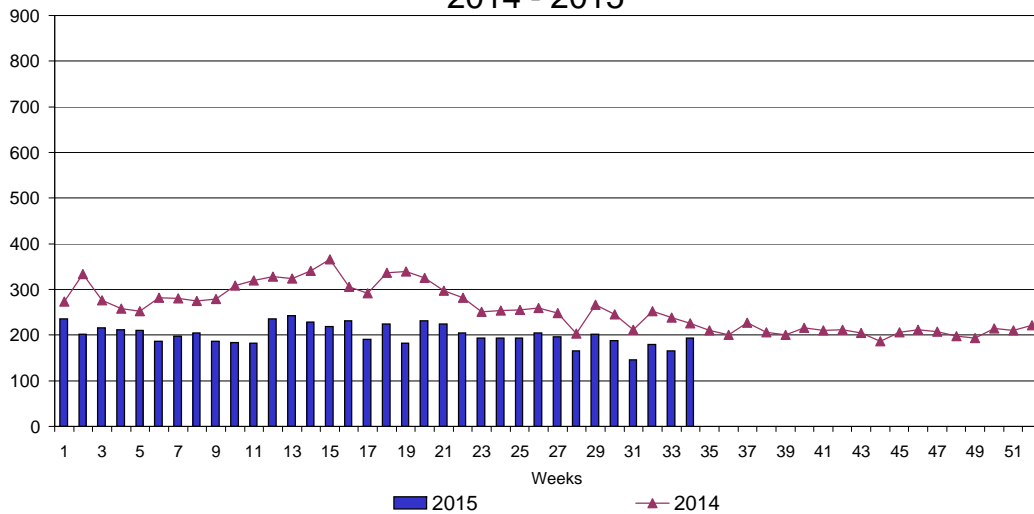
UI Claims Comparison Year to Date



UI Initial Claims 2013 - 2015



UI Exhaustions 2014 - 2015



TDI Claims Comparison Year to Date

