



Rhode Island Department of Labor and Training

Weekly Update of Claims Activity

Week Ending: August 29, 2015

Unemployment Insurance

Initial Claims – 876 initial claims were processed during the week ending 8/29/15, a decrease of 117 from the previous week, and a decrease of 124 from a year ago. The number of initial claims filed to date is down 10.3 percent from last year and down 16.4 percent from two years ago.

Continued Claims – 9,839 continued claims were processed during the week of 8/29/15, a decrease of 177 from the previous week and a decrease of 1,054 from a year ago. The number of continued claims filed to date is down 12.9 percent from last year and down 17.8 percent from two years ago.

Workshare – gives employers an alternative to layoffs by allowing employees to work reduced hours and collect a percentage of regular UI benefits to compensate for lost pay. This week, 0 initial claims and 216 continued claims were processed.

Exhaustions – 162 individuals exhausted their regular payments this week, a decrease of 32 from the previous week and a decrease of 48 from a year ago.

Temporary Disability Insurance

Temporary Disability Insurance – 842 initial claims and 8,157 continued claims were processed for Temporary Disability Insurance. The average weekly TDI payment is \$455 per week. Rhode Island is currently paying an average of 10.5 weeks per new claim. To date there have been 31,801 TDI initial claims filed.

Temporary Caregiver Insurance – Of the 842 TDI initial claims, 160 (19.0%) were TCI Claims. This week 341 TCI payments were issued totaling \$165,423. The average weekly TCI payment was \$485. Of the 31,801 TDI claims filed in 2015, 4,636 or 14.6% were TCI claims.

	Initial Claims			Continued Claims	TOTAL - Initial and Continued Claims			
	Total	New	Additional		Current Week	Previous Week	Year Ago	Two Years Ago
Total - All programs*	903	536	367	10,440	11,343	11,703	12,838	15,245
UI Claims	876	518	358	9,839	10,715	11,009	11,893	13,496
Change from:								
Previous Week	-117	-46	-71	-177	-294			
Year Ago	-124	-105	-19	-1,054	-1,178			
Two Years Ago	-455	-279	-176	-2,326	-2,781			
Interstate-Liable	27	18	9	385	412	419	498	625
Workshare	0	0	0	216	216	275	447	1,124
Workshare Equivalency	0	0	0	46	46	65	106	271
UI Exhaustions	-	-	-	162	162	194	210	254
TDI Claims (Includes TCI)	842	626	216	8,157	8,999	9,661	8,653	8,798
Change from:								
Previous Week	-276	-238	-38	-386	-662			
Year Ago	280	197	83	66	346			

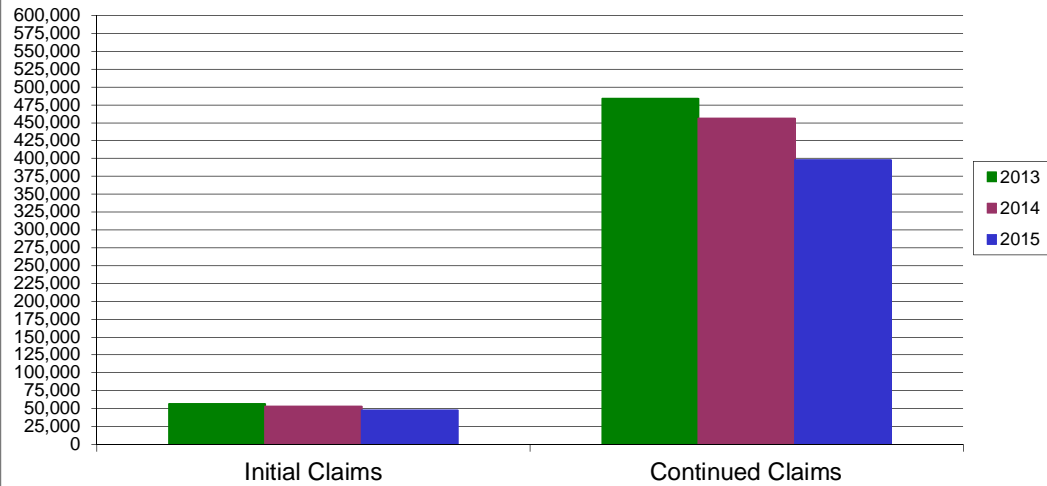
* Includes UI, Workshare & Interstate Liable.

Equal Opportunity Employer / Program / Auxiliary aids and services available upon request to individuals with disabilities / TTY via RI Relay 711.

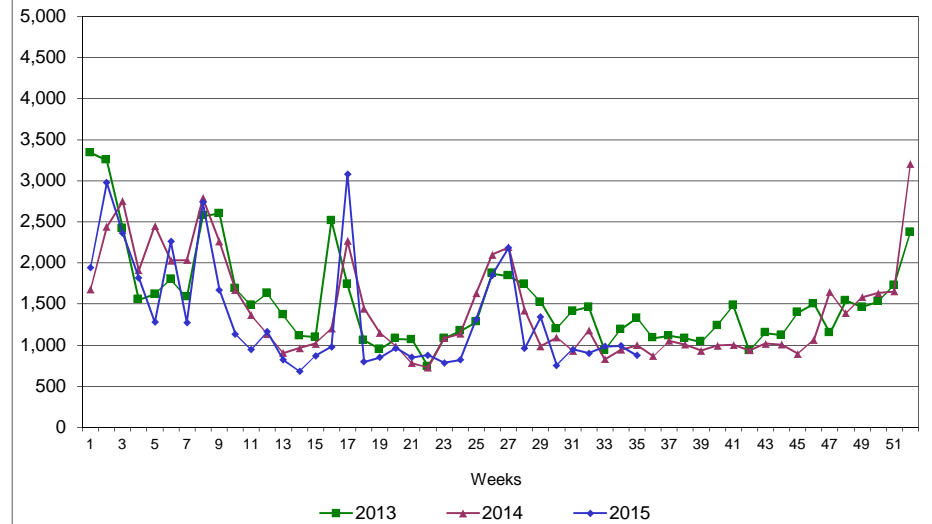
Rhode Island Department of Labor and Training

August 29, 2015

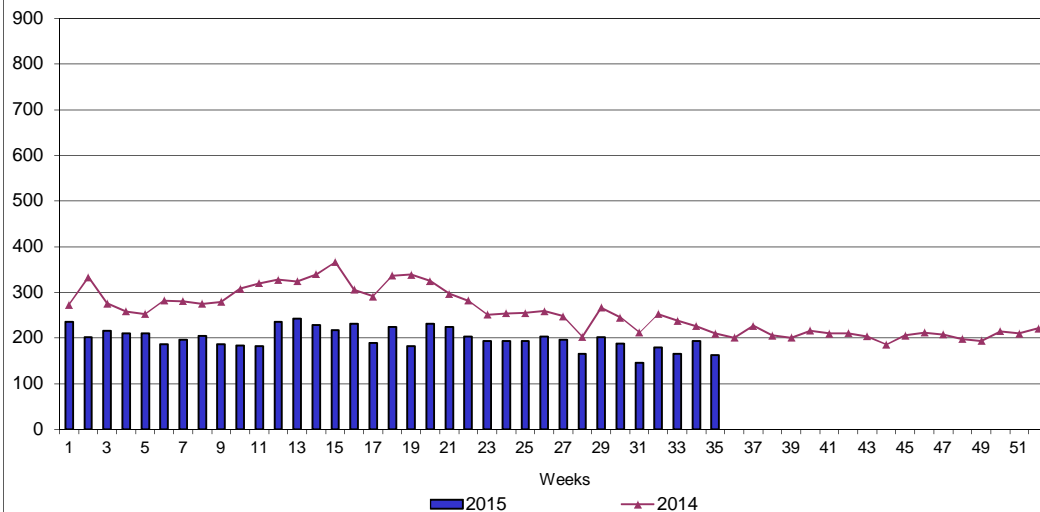
UI Claims Comparison Year to Date



UI Initial Claims 2013 - 2015



UI Exhaustions 2014 - 2015



TDI Claims Comparison Year to Date

