



Rhode Island Department of Labor and Training

Weekly Update of Claims Activity

Week Ending: September 5, 2015

Unemployment Insurance

Initial Claims – 913 initial claims were processed during the week ending 9/5/15, an increase of 37 from the previous week, and an increase of 48 from a year ago. The number of initial claims filed to date is down 10.1 percent from last year and down 16.4 percent from two years ago.

Continued Claims – 9,155 continued claims were processed during the week of 9/5/15, a decrease of 684 from the previous week and an increase of 136 from a year ago. The number of continued claims filed to date is down 12.6 percent from last year and down 17.7 percent from two years ago.

Workshare – gives employers an alternative to layoffs by allowing employees to work reduced hours and collect a percentage of regular UI benefits to compensate for lost pay. This week, 15 initial claims and 220 continued claims were processed. An estimated 3 layoffs were prevented this week, as a result of Workshare.

Exhaustions – 178 individuals exhausted their regular payments this week, an increase of 16 from the previous week and a decrease of 23 from a year ago.

Temporary Disability Insurance

Temporary Disability Insurance – 902 initial claims and 8,181 continued claims were processed for Temporary Disability Insurance. The average weekly TDI payment is \$459 per week. Rhode Island is currently paying an average of 10.4 weeks per new claim. To date there have been 32,703 TDI initial claims filed.

Temporary Caregiver Insurance – Of the 902 TDI initial claims, 206 (22.8%) were TCI Claims. This week 400 TCI payments were issued totaling \$218,007. The average weekly TCI payment was \$545. Of the 32,703 TDI claims filed in 2015, 4,842 or 14.8% were TCI claims.

	Initial Claims			Continued Claims	TOTAL - Initial and Continued Claims			
	Total	New	Additional		Current Week	Previous Week	Year Ago	Two Years Ago
Total - All programs*	958	633	325	9,783	10,741	11,343	10,847	12,727
UI Claims	913	600	313	9,155	10,068	10,715	9,884	11,400
Change from:								
Previous Week	37	82	-45	-684	-647			
Year Ago	48	24	24	136	184			
Two Years Ago	-171	-63	-108	-1,161	-1,332			
Interstate-Liable	30	18	12	408	438	412	483	621
Workshare	15	15	0	220	235	216	480	706
Workshare Equivalency	3	3	0	62	65	46	123	161
UI Exhaustions	-	-	-	178	178	162	201	247
TDI Claims (Includes TCI)	902	699	203	8,181	9,083	8,999	8,554	7,216
Change from:								
Previous Week	60	73	-13	24	84			
Year Ago	196	123	73	333	529			

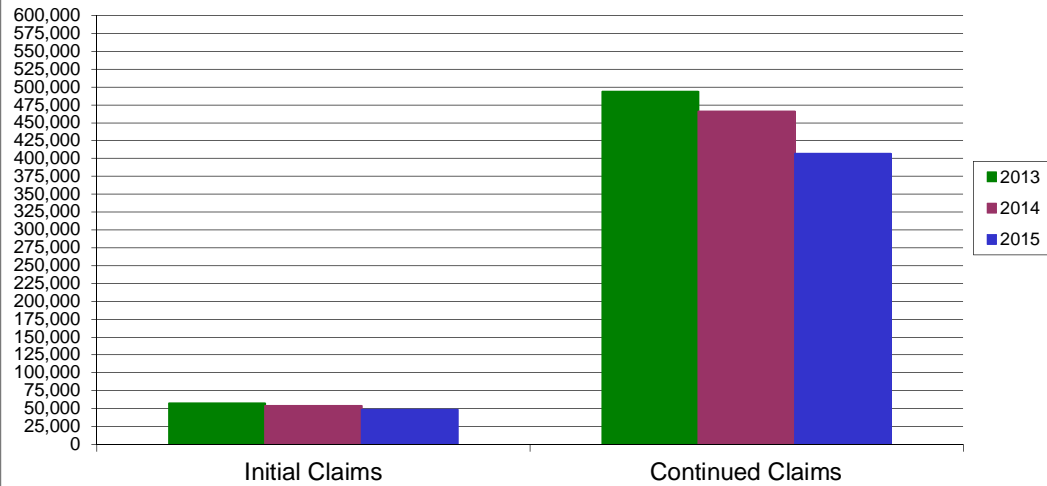
* Includes UI, Workshare & Interstate Liable.

Equal Opportunity Employer / Program / Auxiliary aids and services available upon request to individuals with disabilities / TTY via RI Relay 711.

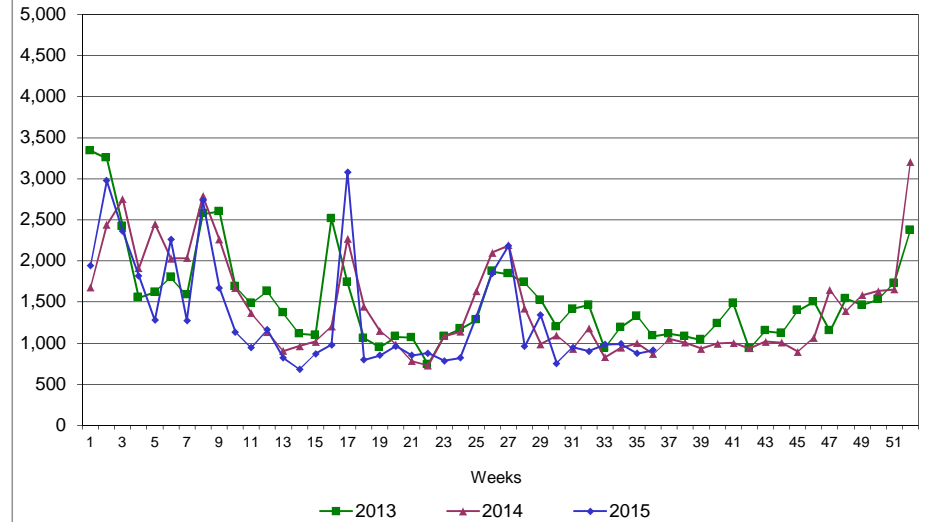
Rhode Island Department of Labor and Training

September 5, 2015

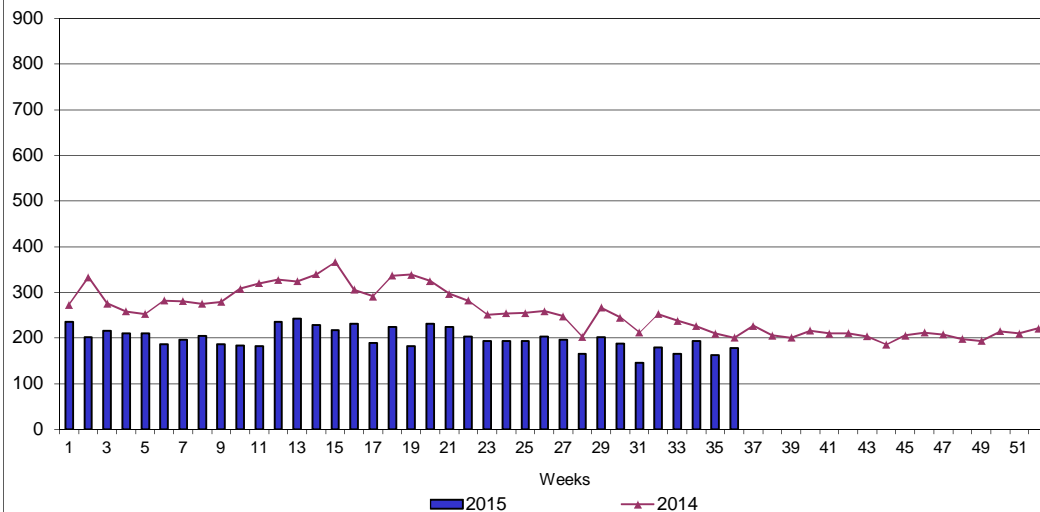
UI Claims Comparison Year to Date



UI Initial Claims 2013 - 2015



UI Exhaustions 2014 - 2015



TDI Claims Comparison Year to Date

